

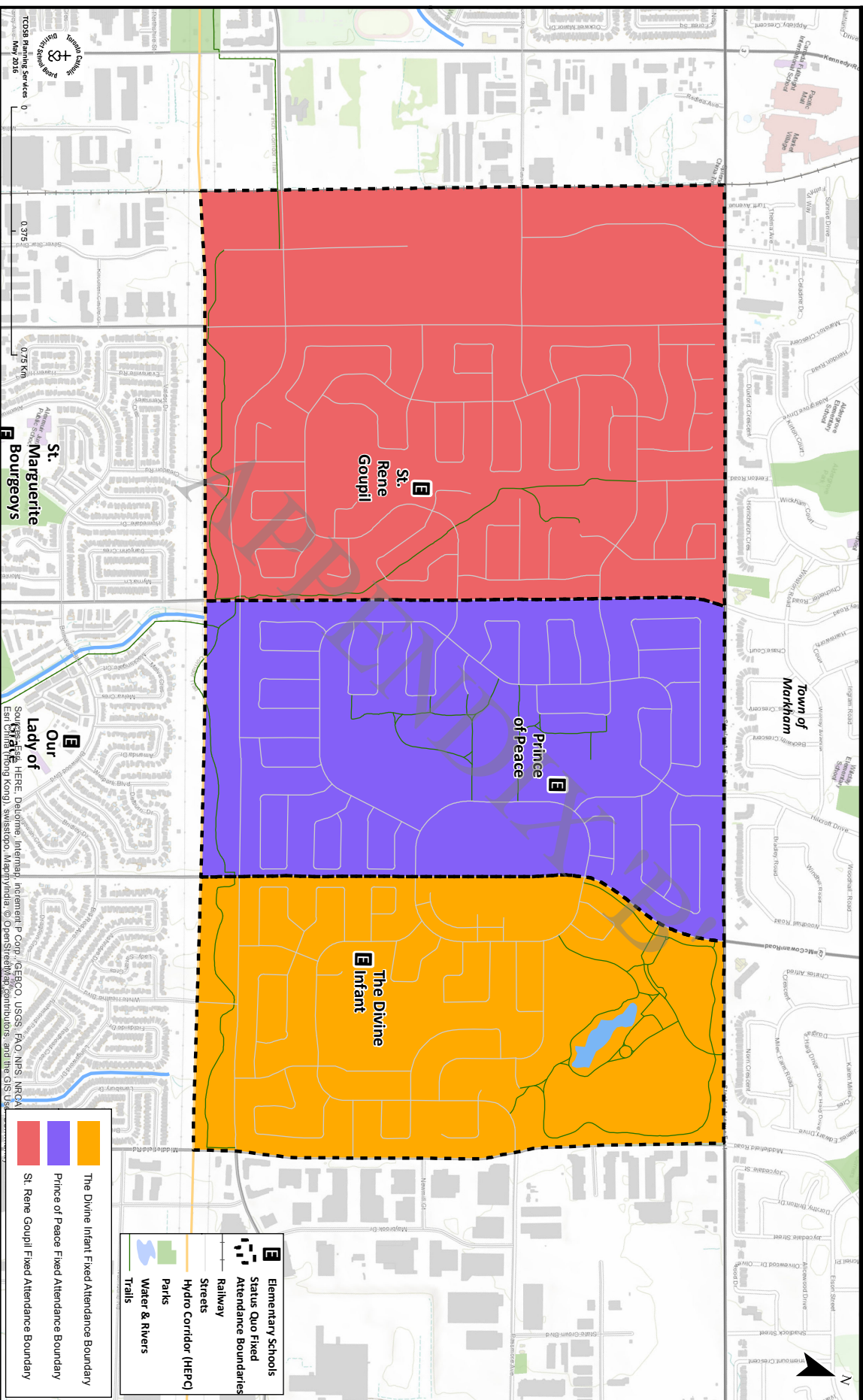
Status Quo: No Changes to Boundaries and No Consolidations

	OTG	2015	2016	2017	2018	2019	2020	2021	2022	2023	2024	2025	2026	2027	2028
Prince of Peace															
Status Quo: Pupil Count		336	318	308	295	290	282	275	275	273	267	270	270	270	270
Status Quo: Rate of Utilization (%)		104%	98%	95%	91%	90%	87%	85%	85%	85%	83%	84%	84%	84%	84%

	OTG	2015	2016	2017	2018	2019	2020	2021	2022	2023	2024	2025	2026	2027	2028
St. Rene Goupil															
Status Quo: Pupil Count		92	87	76	74	69	68	67	65	65	66	67	67	67	67
Status Quo: Rate of Utilization (%)		37%	35%	30%	29%	27%	27%	27%	26%	26%	26%	27%	27%	27%	27%

	OTG	2015	2016	2017	2018	2019	2020	2021	2022	2023	2024	2025	2026	2027	2028
The Divine Infant															
Status Quo: Pupil Count		136	130	122	112	101	99	93	94	89	91	95	95	95	95
Status Quo: Rate of Utilization (%)		44%	42%	40%	37%	33%	32%	30%	31%	29%	30%	31%	31%	31%	31%

Status Quo

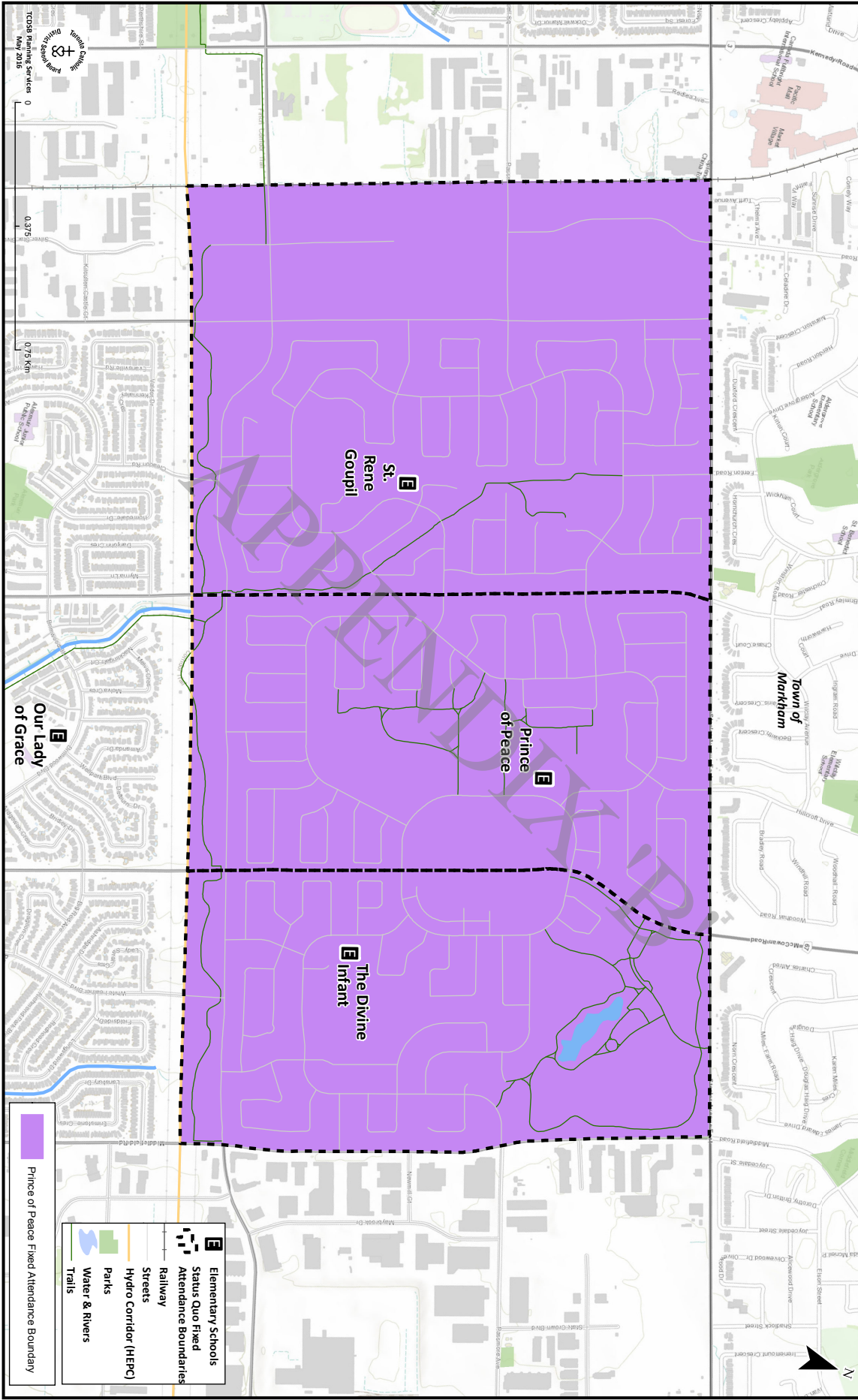


Scenario 1: Consolidation of St. Rene Goupil and The Divine Infant into Prince of Peace

Prince of Peace		OTG	2015	2016	2017	2018	2019	2020	2021	2022	2023	2024	2025	2026	2027	2028
Status Quo: Pupil Count			323	336	318	308	295	290	282	275	275	267	270	270	270	270
Status Quo: Rate of Utilization (%)				104%	98%	95%	91%	90%	87%	85%	85%	83%	84%	84%	84%	84%
After Boundary Change: Pupil Count					535	505	480	460	449	434	427	425	432	432	432	432
After Boundary Change: Rate of Utilization (%)					166%	156%	149%	142%	139%	134%	132%	131%	134%	134%	134%	134%

[illegible][illegible]

Scenario 1: Double Consolidation into Prince of Peace



Prince of Peace Catholic School

255 Alton Towers Cir, Toronto, M1V 4E7

Trustee Ward: Ward 08 - Garry Tanuan
Superintendent Area: Area 7 - Kevin Malcolm
SQS Area: Area 7 - Shiela Farid
EDC Review Area: CE16
City Ward: Scarborough-Rouge River (41)

School programs

School Program: JK – Grade 8
Child Care Program: No
Before After Program: Yes
Transportation: No Regular Home-to-School; No Kindergarten; Special Needs
Eco School Certification: None
Other Programs: None

Best Start Program: No
Accessibility Status: Accessible
BF Parking Space: Yes
Ramp Entry: ground level
Auto Door Opener: No
Elevator: Yes
BF Washroom: Yes

Facility Characteristics

Number of Stories: 2
Site Size: 1.21 Hectares 2.99 Acres
Gross Floor Area: 3,673 SQ Metres 39,536 SQ Feet
Year Built: 1986
Playground Equipment: No

Addition 1	Addition 2	Addition 3	Addition 4
1995	-	-	-

Facility Condition Index (FCI)

Last EDU Inspection¹: 2014-15
EDU Comparable FCI (%) ²: 33

- 5-Year Renewal Needs Range: 2014-2018
- 1) The Ministry is conducting condition assessments of all schools. The inspections began in 2011 and facilities will be assessed over a five-year period. The Ministry last conducted condition assessments in 2002-03.
- 2) Based on condition assessment findings, the Ministry of Education calculates five-year renewal needs and replacement value to determine the Facility Condition Index (FCI).

Current Enrolment and Utilization Rate

October 31st Enrolment ³	OTG Capacity ⁴	Current Utilization	Portables
336	323	104%	1

- 3) Based on Pupil Count (all JK/SK at 1.0) Trillium Extract, October 31, 2015
- 4) OTG is based on 2015-2016 capacities

Historical Enrolment

	Historical October Pupil Count (All JK/SK at 1.0)						Historical OnSIS Approved Average Daily Enrolment (ADE)				
	2010-11	2011-12	2012-13	2013-14	2014-15	2014-15	2010-11	2011-12	2012-13	2013-14	2014-15
Historical Enrolment	335	335	339	339	345	345	310	310	310	315	342
Utilization Rate	103.7%	103.7%	105.0%	105.0%	107%	107%	95.4%	96.0%	95.9%	97.4%	106%

Projected Enrolment⁵

	2016-17	2017-18	2018-19	2019-20	2020-21	2025-26	2030-31
Projected October Pupil Count	318	308	295	290	282	270	270
Utilization Rate	98%	95%	91%	90%	87%	84%	84%

5) 2016-17 to 2018-19 are Board Approved Projections.

For more information, please visit the School Website:

<http://princeofpeace.tcdsb.org>

Last Updated: 27-Apr-16
TCDsb Planning And Accountability



Ortho Site Plan (2011 Image)



Assessment Parcel Map (2011 Image)

The Divine Infant Catholic School

30 Ingleton Blvd, Toronto, M1V 3H7

Trustee Ward: Ward 08 - Garry Tanuan
Superintendent Area: Area 7 - Kevin Malcolm
SQS Area: Area 7 - Shiela Farid
EDC Review Area: CE16
City Ward: Scarborough-Rouge River (41)

School programs

School Program: JK – Grade 8
Child Care Program: Yes
Before After Program: Yes
Transportation: No Regular Home-to-School; No Kindergarten; Special Needs
Eco School Certification: Nutrition, Deaf & Hard of Hearing
Other Programs:

Best Start Program: Yes
Accessibility Status: Partial
BF Parking Space: Yes
Ramp Entry: No
Auto Door Opener: Yes
Elevator: No
BF Washroom: Yes

Facility Characteristics

Number of Stories: 1
Site Size: 1.22 Hectares 3.01 Acres
Gross Floor Area: 3,486 SQ Metres 37,523 SQ Feet
Year Built: 1986
Playground Equipment: No

Additions:	Addition 1	Addition 2	Addition 3	Addition 4
	-	-	-	-

Facility Condition Index (FCI)

Last EDU Inspection¹: 2014-15
EDU Comparable FCI (%) ²: 22
5-Year Renewal Needs Range: 2014-2018

- 1) The Ministry is conducting condition assessments of all schools. The inspections began in 2011 and facilities will be assessed over a five-year period. The Ministry last conducted condition assessments in 2002-03.
- 2) Based on condition assessment findings, the Ministry of Education calculates five-year renewal needs and replacement value to determine the Facility Condition Index (FCI).

Current Enrolment and Utilization Rate

October 31st Enrolment ³	OTG Capacity ⁴	Current Utilization	Portables
136	306	44%	0

- 3) Based on Pupil Count (all JK/SK at 1.0) Trillium Extract, October 31, 2015
- 4) OTG is based on 2015-2016 capacities

Historical Enrolment

	Historical October Pupil Count (All JK/SK at 1.0)						Historical OnSIS Approved Average Daily Enrolment (ADE)				
	2010-11	2011-12	2012-13	2013-14	2014-15	2015-16	2010-11	2011-12	2012-13	2013-14	2014-15
Historical Enrolment	176	169	170	167	156	151	150	150	156	151	155
Utilization Rate	57.5%	55.2%	55.6%	54.6%	51%	51.5%	48.9%	48.9%	51.0%	49.3%	51%

Projected Enrolment⁵

	2016-17	2017-18	2018-19	2019-20	2020-21	2021-22	2022-23	2023-24	2024-25	2025-26	2026-27	2027-28	2028-29	2029-30	2030-31
Projected October Pupil Count	130	122	112	101	99	95	95	95	95	95	95	95	95	95	95
Utilization Rate	42%	40%	37%	33%	32%	31%	31%	31%	31%	31%	31%	31%	31%	31%	31%

5) 2016-17 to 2018-19 are Board Approved Projections.

For more information, please visit the School Website:

<http://TheDivineInfant.tcdsb.org>

Last Updated: 27-Apr-16
TCDsb Planning And Accountability



Ortho Site Plan (2011 Image)



Assessment Parcel Map (2011 Image)

St. Rene Goupil Catholic School

44 Port Royal Tr, Toronto, M1V 2G8

Trustee Ward: Ward 08 - Garry Tanuan
Superintendent Area: Area 7 - Nic D'Avella
SQS Area: Area 7 - Shiela Farid
EDC Review Area: CE16
City Ward: Scarborough-Rouge River (41)

School programs

School Program:	JK – Grade 8	Best Start Program:	No
Child Care Program:	Yes	Accessibility Status:	Partial
Before After Program:	Yes	BF Parking Space:	Yes
Transportation:	No Regular Home-to-School; No Mid-day Kindergarten; Special Needs	Ramp Entry:	ground level
Eco School Certification:	None	Auto Door Opener:	No
Other Programs:	None	Elevator:	No
		BF Washroom:	Yes

Facility Characteristics

Number of Stories:	2			
Site Size:	1.21 Hectares	2.99 Acres		
Gross Floor Area:	2,883 SQ Metres	31,032 SQ Feet		
Year Built:	1982			
Playground Equipment:	No			
Additions:				
	Addition 1	Addition 2	Addition 3	Addition 4
	-	-	-	-

Facility Condition Index (FCI)

Last EDU Inspection¹ : 2014-15
EDU Comparable FCI (%) ² : 19

- 5-Year Renewal Needs Range: 2014-2018
- 1) The Ministry is conducting condition assessments of all schools. The inspections began in 2011 and facilities will be assessed over a five-year period. The Ministry last conducted condition assessments in 2002-03.
- 2) Based on condition assessment findings, the Ministry of Education calculates five-year renewal needs and replacement value to determine the Facility Condition Index (FCI).

Current Enrolment and Utilization Rate

October 31st Enrolment ³	OTG Capacity ⁴	Current Utilization	Portables
92	242	38%	0

- 3) Based on Pupil Count (all JK/SK at 1.0) Trillium Extract, October 31, 2015
- 4) OTG is based on 2015-2016 capacities

Historical Enrolment

	Historical October Pupil Count (All JK/SK at 1.0)						Historical OnSIS Approved Average Daily Enrolment (ADE)				
	2010-11	2011-12	2012-13	2013-14	2014-15	2015-16	2010-11	2011-12	2012-13	2013-14	2014-15
Historical Enrolment	153	144	145	130	113	139	133	130	130	113	112
Utilization Rate	63.2%	59.5%	59.9%	53.7%	47%	57.4%	54.9%	53.7%	53.7%	46.6%	46%

Projected Enrolment⁵

	2016-17	2017-18	2018-19	2019-20	2020-21	2025-26	2030-31
Projected October Pupil Count	87	76	74	69	68	67	67
Utilization Rate	35%	30%	29%	27%	27%	27%	27%

5) 2016-17 to 2018-19 are Board Approved Projections.

For more information, please visit the School Website:

<http://strenegoupil.tcdsb.org>

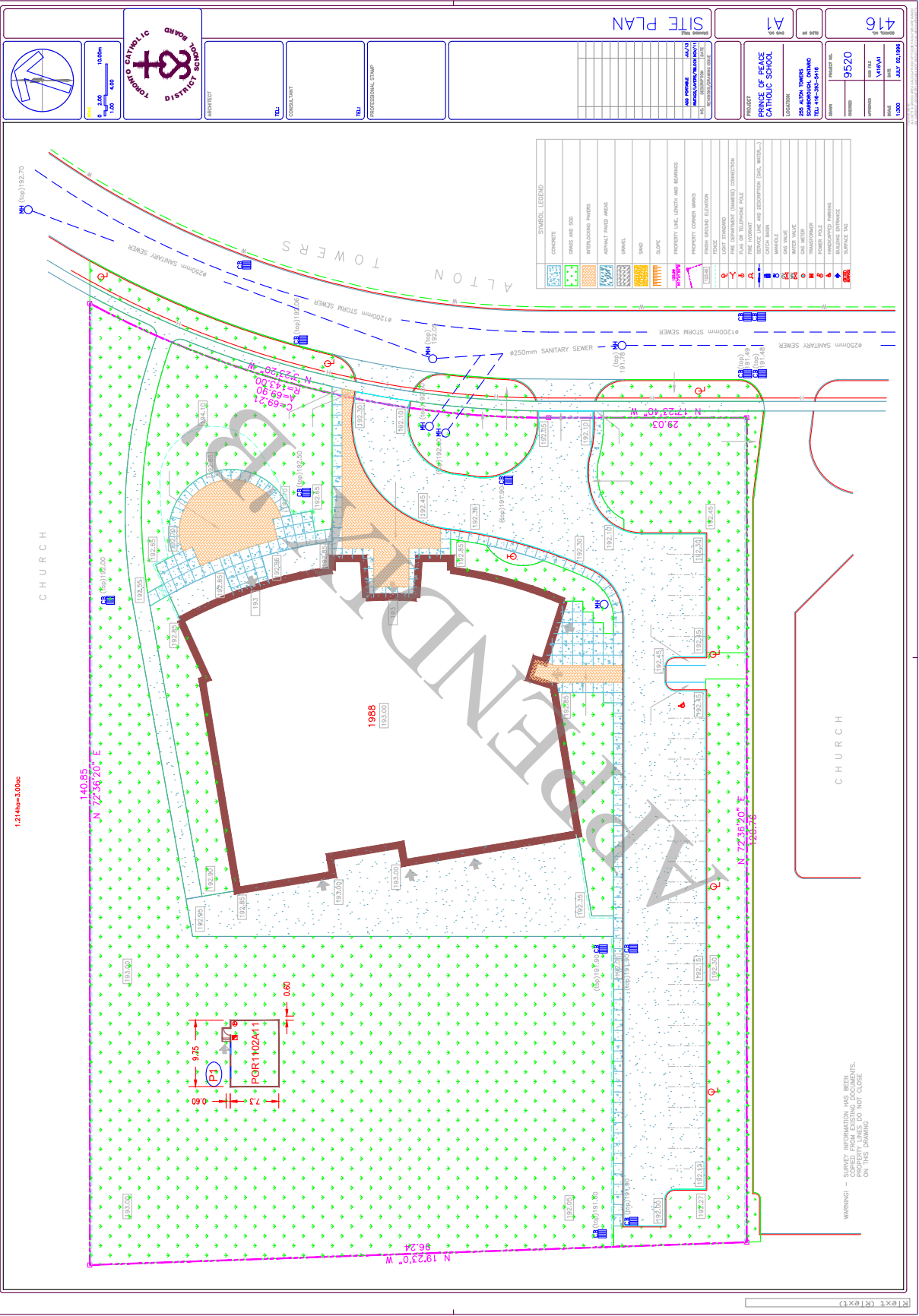
Last Updated: 27-Apr-16
TCDsb Planning And Accountability

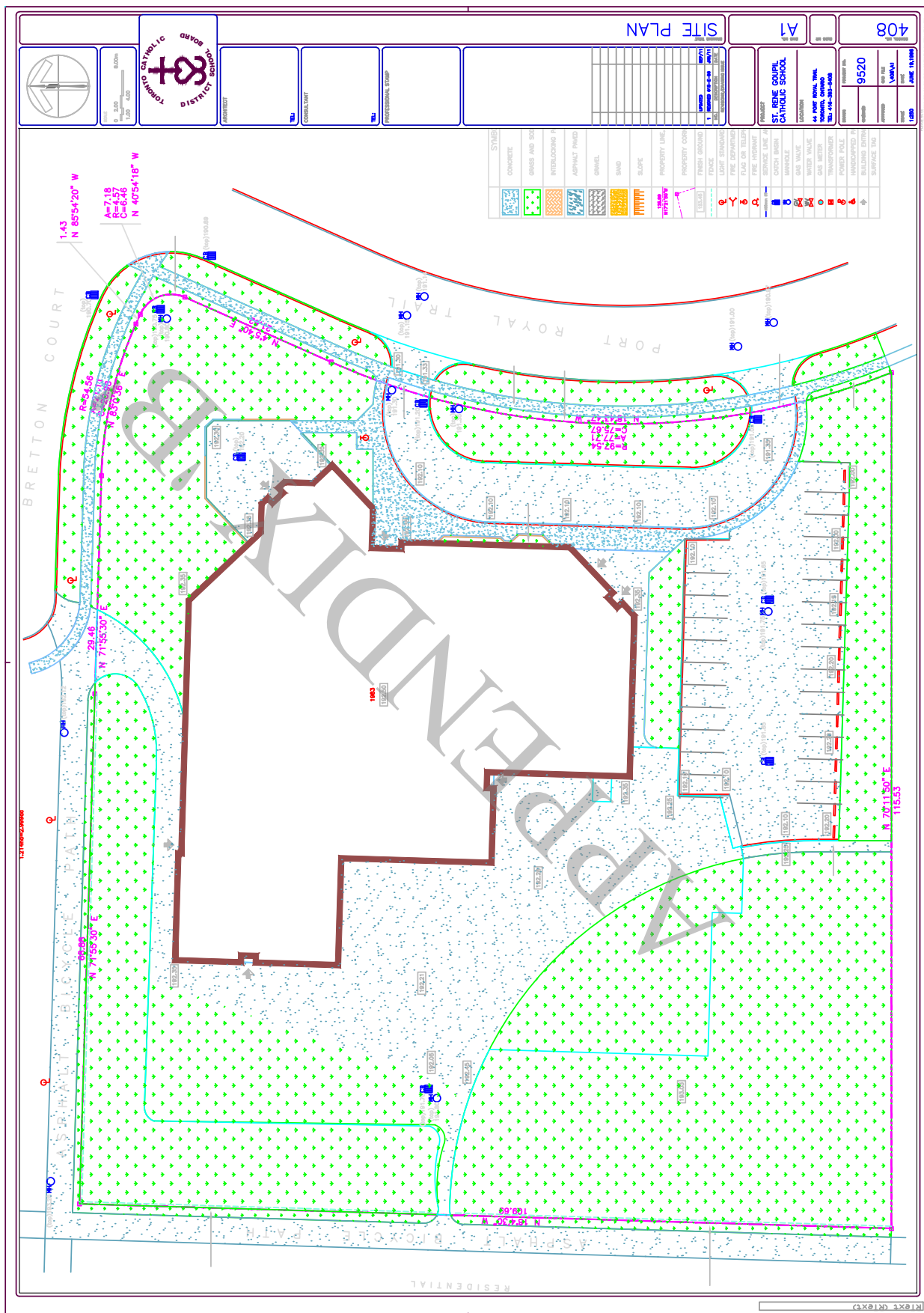


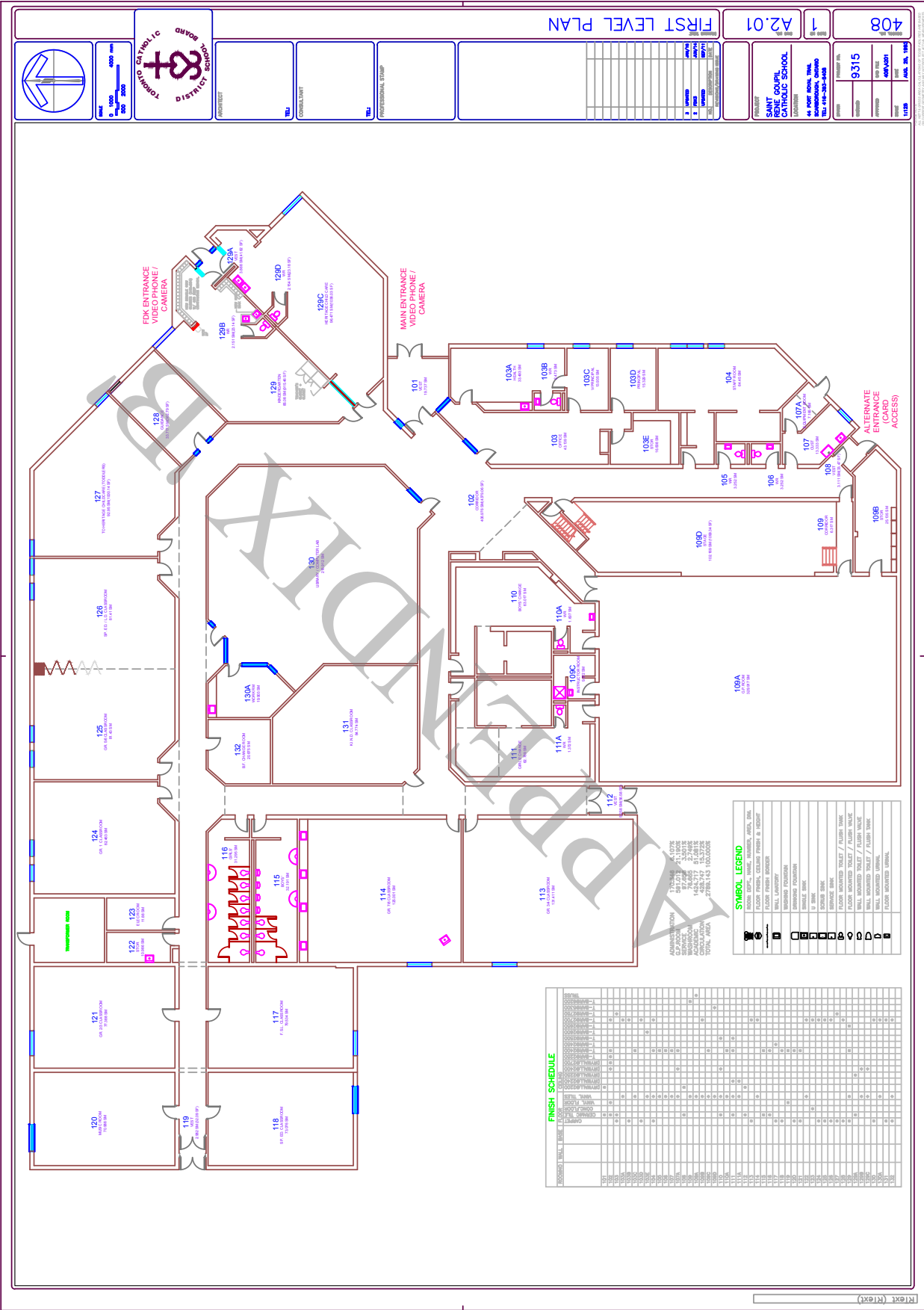
Ortho Site Plan (2011 Image)



Assessment Parcel Map (2011 Image)



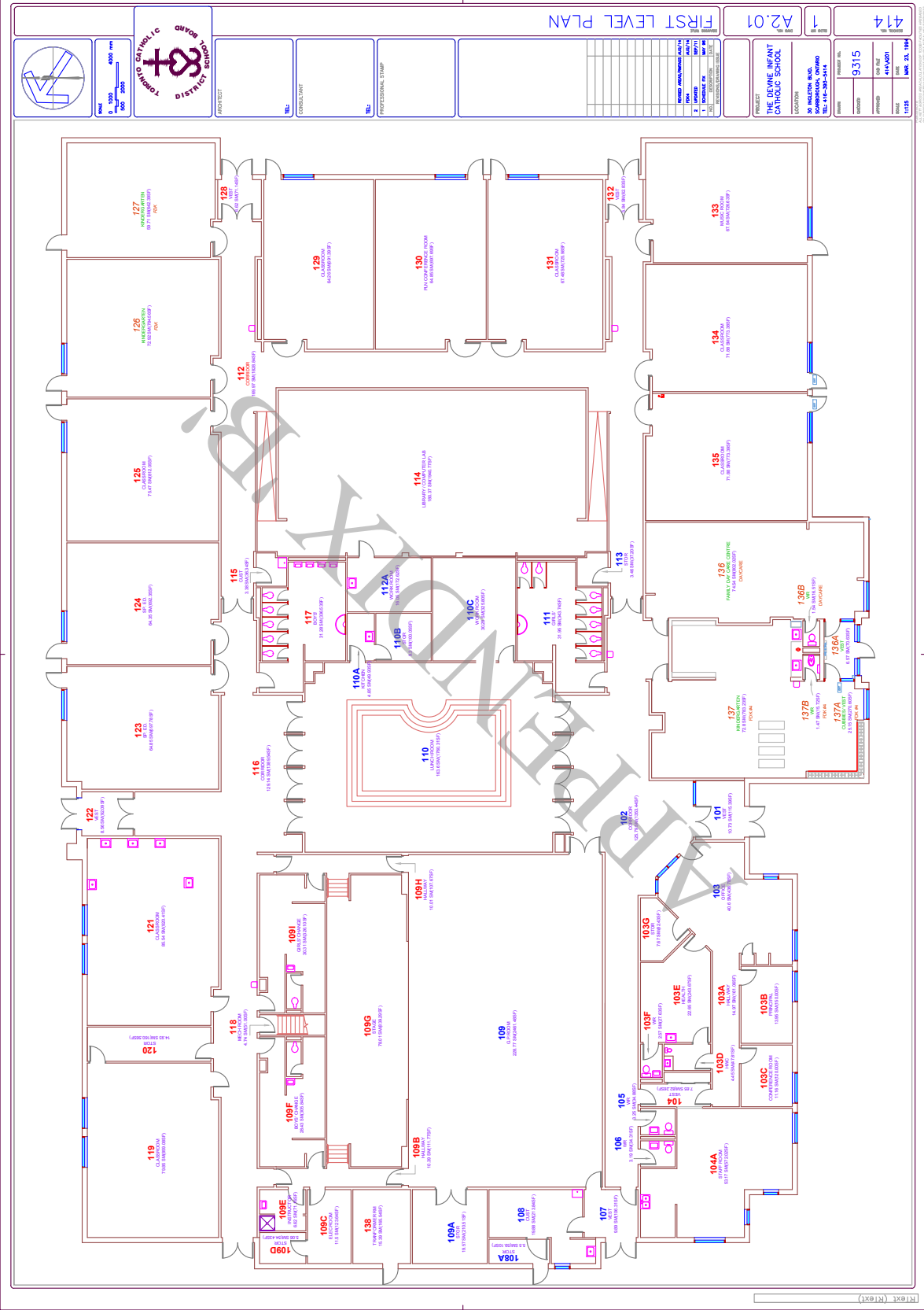


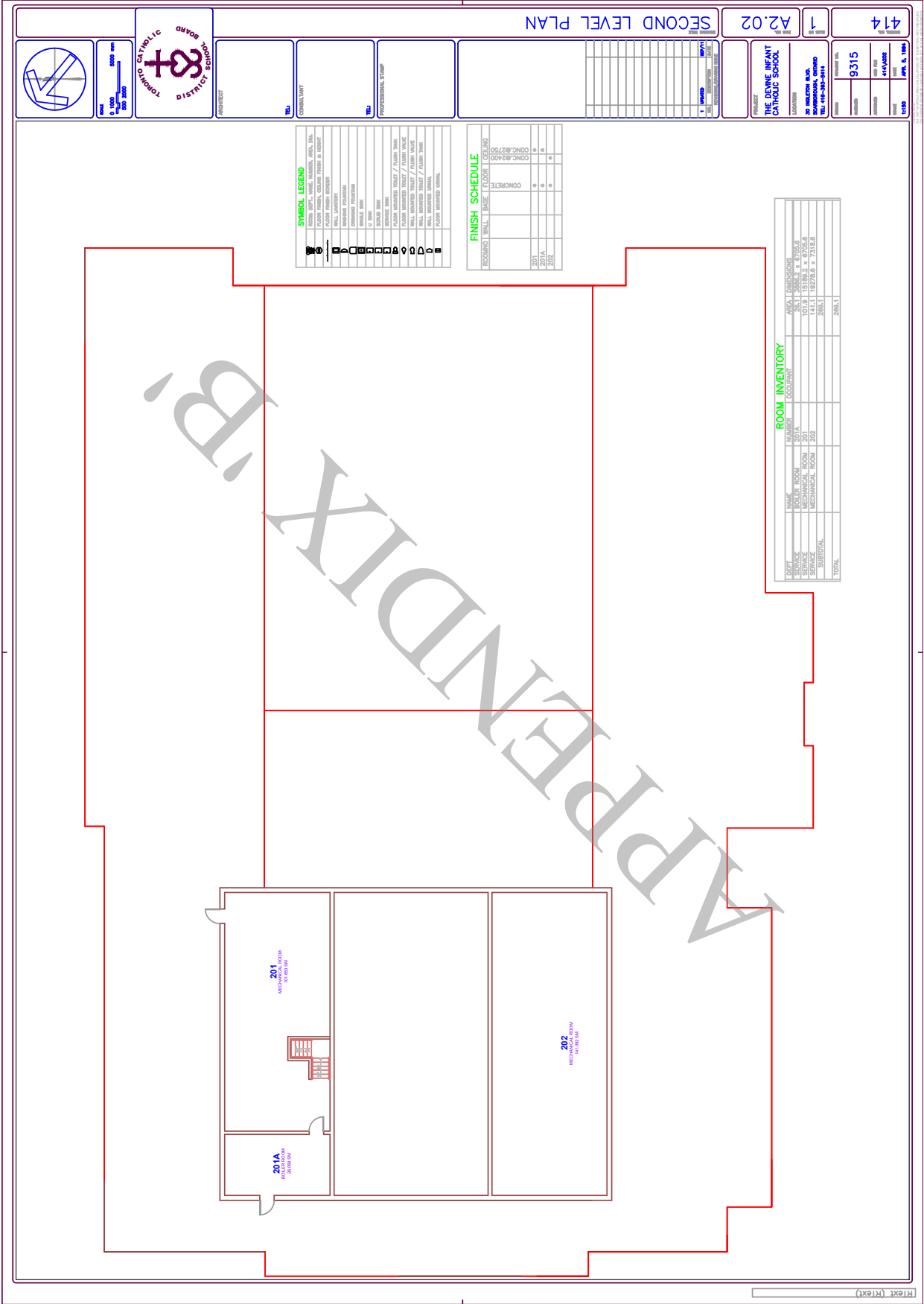


FINISH SCHEDULE	
ITEM NO.	DESCRIPTION
101	10' x 10' x 8' 6" CONCRETE SLAB
102	10' x 10' x 8' 6" CONCRETE SLAB
103	10' x 10' x 8' 6" CONCRETE SLAB
104	10' x 10' x 8' 6" CONCRETE SLAB
105	10' x 10' x 8' 6" CONCRETE SLAB
106	10' x 10' x 8' 6" CONCRETE SLAB
107	10' x 10' x 8' 6" CONCRETE SLAB
108	10' x 10' x 8' 6" CONCRETE SLAB
109	10' x 10' x 8' 6" CONCRETE SLAB
110	10' x 10' x 8' 6" CONCRETE SLAB
111	10' x 10' x 8' 6" CONCRETE SLAB
112	10' x 10' x 8' 6" CONCRETE SLAB
113	10' x 10' x 8' 6" CONCRETE SLAB
114	10' x 10' x 8' 6" CONCRETE SLAB
115	10' x 10' x 8' 6" CONCRETE SLAB
116	10' x 10' x 8' 6" CONCRETE SLAB
117	10' x 10' x 8' 6" CONCRETE SLAB
118	10' x 10' x 8' 6" CONCRETE SLAB
119	10' x 10' x 8' 6" CONCRETE SLAB
120	10' x 10' x 8' 6" CONCRETE SLAB
121	10' x 10' x 8' 6" CONCRETE SLAB
122	10' x 10' x 8' 6" CONCRETE SLAB
123	10' x 10' x 8' 6" CONCRETE SLAB
124	10' x 10' x 8' 6" CONCRETE SLAB
125	10' x 10' x 8' 6" CONCRETE SLAB
126	10' x 10' x 8' 6" CONCRETE SLAB
127	10' x 10' x 8' 6" CONCRETE SLAB
128	10' x 10' x 8' 6" CONCRETE SLAB
129	10' x 10' x 8' 6" CONCRETE SLAB
130	10' x 10' x 8' 6" CONCRETE SLAB
131	10' x 10' x 8' 6" CONCRETE SLAB
132	10' x 10' x 8' 6" CONCRETE SLAB
133	10' x 10' x 8' 6" CONCRETE SLAB
134	10' x 10' x 8' 6" CONCRETE SLAB
135	10' x 10' x 8' 6" CONCRETE SLAB
136	10' x 10' x 8' 6" CONCRETE SLAB
137	10' x 10' x 8' 6" CONCRETE SLAB
138	10' x 10' x 8' 6" CONCRETE SLAB
139	10' x 10' x 8' 6" CONCRETE SLAB
140	10' x 10' x 8' 6" CONCRETE SLAB
141	10' x 10' x 8' 6" CONCRETE SLAB
142	10' x 10' x 8' 6" CONCRETE SLAB
143	10' x 10' x 8' 6" CONCRETE SLAB
144	10' x 10' x 8' 6" CONCRETE SLAB
145	10' x 10' x 8' 6" CONCRETE SLAB
146	10' x 10' x 8' 6" CONCRETE SLAB
147	10' x 10' x 8' 6" CONCRETE SLAB
148	10' x 10' x 8' 6" CONCRETE SLAB
149	10' x 10' x 8' 6" CONCRETE SLAB
150	10' x 10' x 8' 6" CONCRETE SLAB
151	10' x 10' x 8' 6" CONCRETE SLAB
152	10' x 10' x 8' 6" CONCRETE SLAB
153	10' x 10' x 8' 6" CONCRETE SLAB
154	10' x 10' x 8' 6" CONCRETE SLAB
155	10' x 10' x 8' 6" CONCRETE SLAB
156	10' x 10' x 8' 6" CONCRETE SLAB
157	10' x 10' x 8' 6" CONCRETE SLAB
158	10' x 10' x 8' 6" CONCRETE SLAB
159	10' x 10' x 8' 6" CONCRETE SLAB
160	10' x 10' x 8' 6" CONCRETE SLAB
161	10' x 10' x 8' 6" CONCRETE SLAB
162	10' x 10' x 8' 6" CONCRETE SLAB
163	10' x 10' x 8' 6" CONCRETE SLAB
164	10' x 10' x 8' 6" CONCRETE SLAB
165	10' x 10' x 8' 6" CONCRETE SLAB
166	10' x 10' x 8' 6" CONCRETE SLAB
167	10' x 10' x 8' 6" CONCRETE SLAB
168	10' x 10' x 8' 6" CONCRETE SLAB
169	10' x 10' x 8' 6" CONCRETE SLAB
170	10' x 10' x 8' 6" CONCRETE SLAB
171	10' x 10' x 8' 6" CONCRETE SLAB
172	10' x 10' x 8' 6" CONCRETE SLAB
173	10' x 10' x 8' 6" CONCRETE SLAB
174	10' x 10' x 8' 6" CONCRETE SLAB
175	10' x 10' x 8' 6" CONCRETE SLAB
176	10' x 10' x 8' 6" CONCRETE SLAB
177	10' x 10' x 8' 6" CONCRETE SLAB
178	10' x 10' x 8' 6" CONCRETE SLAB
179	10' x 10' x 8' 6" CONCRETE SLAB
180	10' x 10' x 8' 6" CONCRETE SLAB
181	10' x 10' x 8' 6" CONCRETE SLAB
182	10' x 10' x 8' 6" CONCRETE SLAB
183	10' x 10' x 8' 6" CONCRETE SLAB
184	10' x 10' x 8' 6" CONCRETE SLAB
185	10' x 10' x 8' 6" CONCRETE SLAB
186	10' x 10' x 8' 6" CONCRETE SLAB
187	10' x 10' x 8' 6" CONCRETE SLAB
188	10' x 10' x 8' 6" CONCRETE SLAB
189	10' x 10' x 8' 6" CONCRETE SLAB
190	10' x 10' x 8' 6" CONCRETE SLAB
191	10' x 10' x 8' 6" CONCRETE SLAB
192	10' x 10' x 8' 6" CONCRETE SLAB
193	10' x 10' x 8' 6" CONCRETE SLAB
194	10' x 10' x 8' 6" CONCRETE SLAB
195	10' x 10' x 8' 6" CONCRETE SLAB
196	10' x 10' x 8' 6" CONCRETE SLAB
197	10' x 10' x 8' 6" CONCRETE SLAB
198	10' x 10' x 8' 6" CONCRETE SLAB
199	10' x 10' x 8' 6" CONCRETE SLAB
200	10' x 10' x 8' 6" CONCRETE SLAB

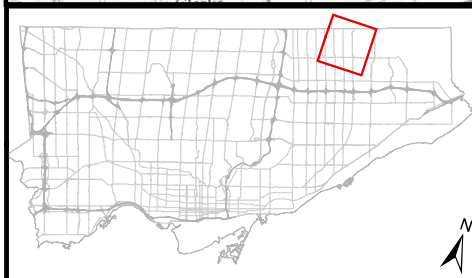
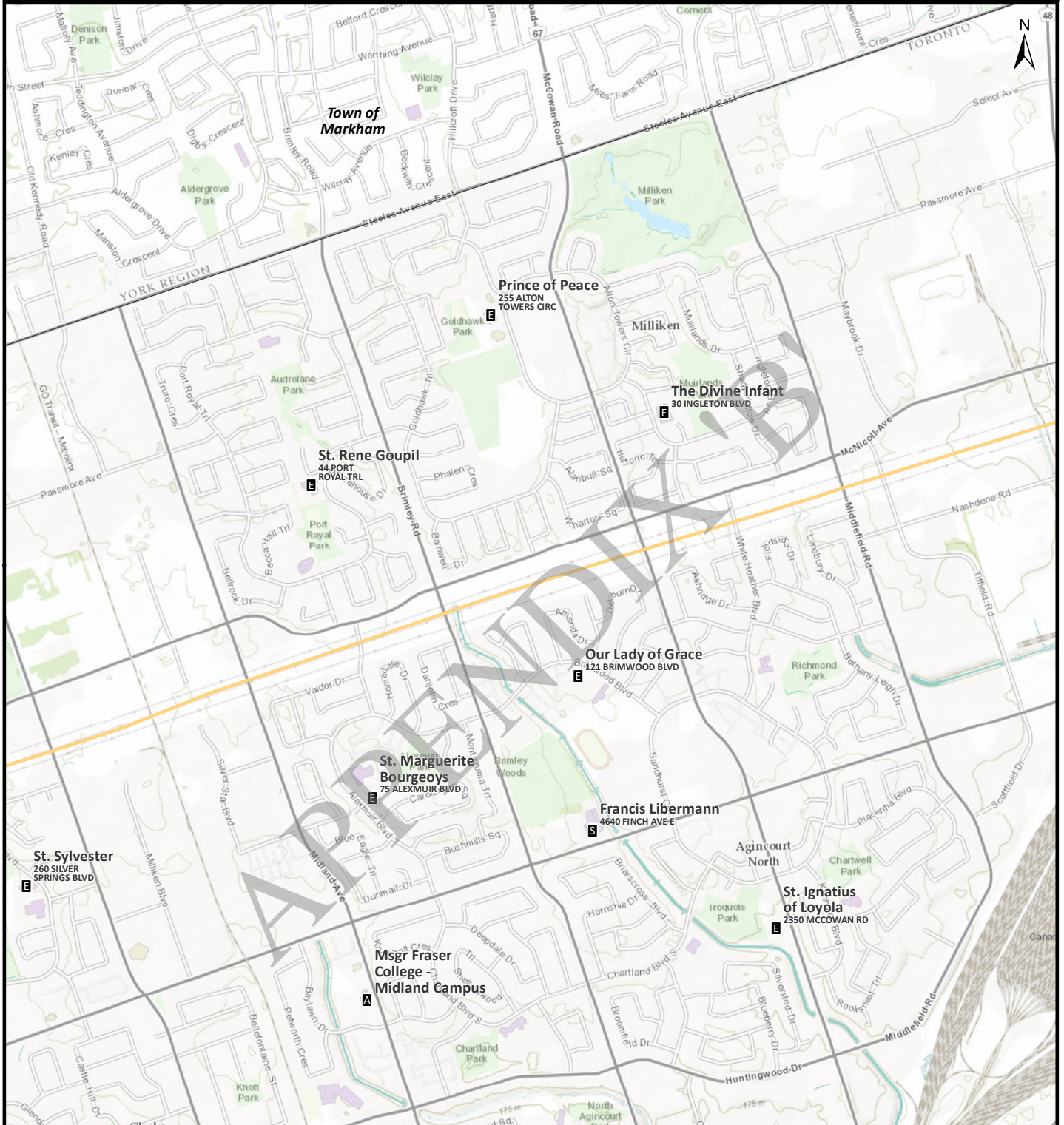
SYMBOL LEGEND	
[Symbol]	DOOR
[Symbol]	WINDOW
[Symbol]	STAIR
[Symbol]	ELEVATOR
[Symbol]	PLUMBING
[Symbol]	ELECTRICAL
[Symbol]	MECHANICAL
[Symbol]	LANDSCAPE
[Symbol]	FINISH
[Symbol]	TEXT
[Symbol]	SCALE
[Symbol]	INDEX
[Symbol]	SECTION
[Symbol]	DETAIL
[Symbol]	ANNOTATION
[Symbol]	REVISION
[Symbol]	DATE
[Symbol]	DRAWN BY
[Symbol]	CHECKED BY
[Symbol]	APPROVED BY
[Symbol]	DATE

CONSTRUCTION
1. ALL CONSTRUCTION SHALL BE IN ACCORDANCE WITH THE LATEST EDITIONS OF THE CANADIAN NATIONAL BUILDING CODE (CNBC) AND THE CANADIAN NATIONAL PLUMBING CODE (CNPC).
2. ALL MATERIALS AND WORKMANSHIP SHALL BE SUBJECT TO INSPECTION AND APPROVAL BY THE LOCAL BUILDING DEPARTMENT.
3. ALL FINISHES SHALL BE IN ACCORDANCE WITH THE LATEST EDITIONS OF THE CANADIAN NATIONAL FINISHES HANDBOOK (CNFH).
4. ALL TEXT SHALL BE IN ACCORDANCE WITH THE LATEST EDITIONS OF THE CANADIAN NATIONAL TEXT HANDBOOK (CNTH).
5. ALL SCALE SHALL BE IN ACCORDANCE WITH THE LATEST EDITIONS OF THE CANADIAN NATIONAL SCALE HANDBOOK (CNSH).
6. ALL INDEX SHALL BE IN ACCORDANCE WITH THE LATEST EDITIONS OF THE CANADIAN NATIONAL INDEX HANDBOOK (CNIH).
7. ALL SECTION SHALL BE IN ACCORDANCE WITH THE LATEST EDITIONS OF THE CANADIAN NATIONAL SECTION HANDBOOK (CNSH).
8. ALL DETAIL SHALL BE IN ACCORDANCE WITH THE LATEST EDITIONS OF THE CANADIAN NATIONAL DETAIL HANDBOOK (CNDH).
9. ALL ANNOTATION SHALL BE IN ACCORDANCE WITH THE LATEST EDITIONS OF THE CANADIAN NATIONAL ANNOTATION HANDBOOK (CNAH).
10. ALL REVISION SHALL BE IN ACCORDANCE WITH THE LATEST EDITIONS OF THE CANADIAN NATIONAL REVISION HANDBOOK (CNRH).
11. ALL DATE SHALL BE IN ACCORDANCE WITH THE LATEST EDITIONS OF THE CANADIAN NATIONAL DATE HANDBOOK (CNDH).
12. ALL DRAWN BY SHALL BE IN ACCORDANCE WITH THE LATEST EDITIONS OF THE CANADIAN NATIONAL DRAWN BY HANDBOOK (CNDH).
13. ALL CHECKED BY SHALL BE IN ACCORDANCE WITH THE LATEST EDITIONS OF THE CANADIAN NATIONAL CHECKED BY HANDBOOK (CNCB).
14. ALL APPROVED BY SHALL BE IN ACCORDANCE WITH THE LATEST EDITIONS OF THE CANADIAN NATIONAL APPROVED BY HANDBOOK (CNAH).
15. ALL DATE SHALL BE IN ACCORDANCE WITH THE LATEST EDITIONS OF THE CANADIAN NATIONAL DATE HANDBOOK (CNDH).





Location Map

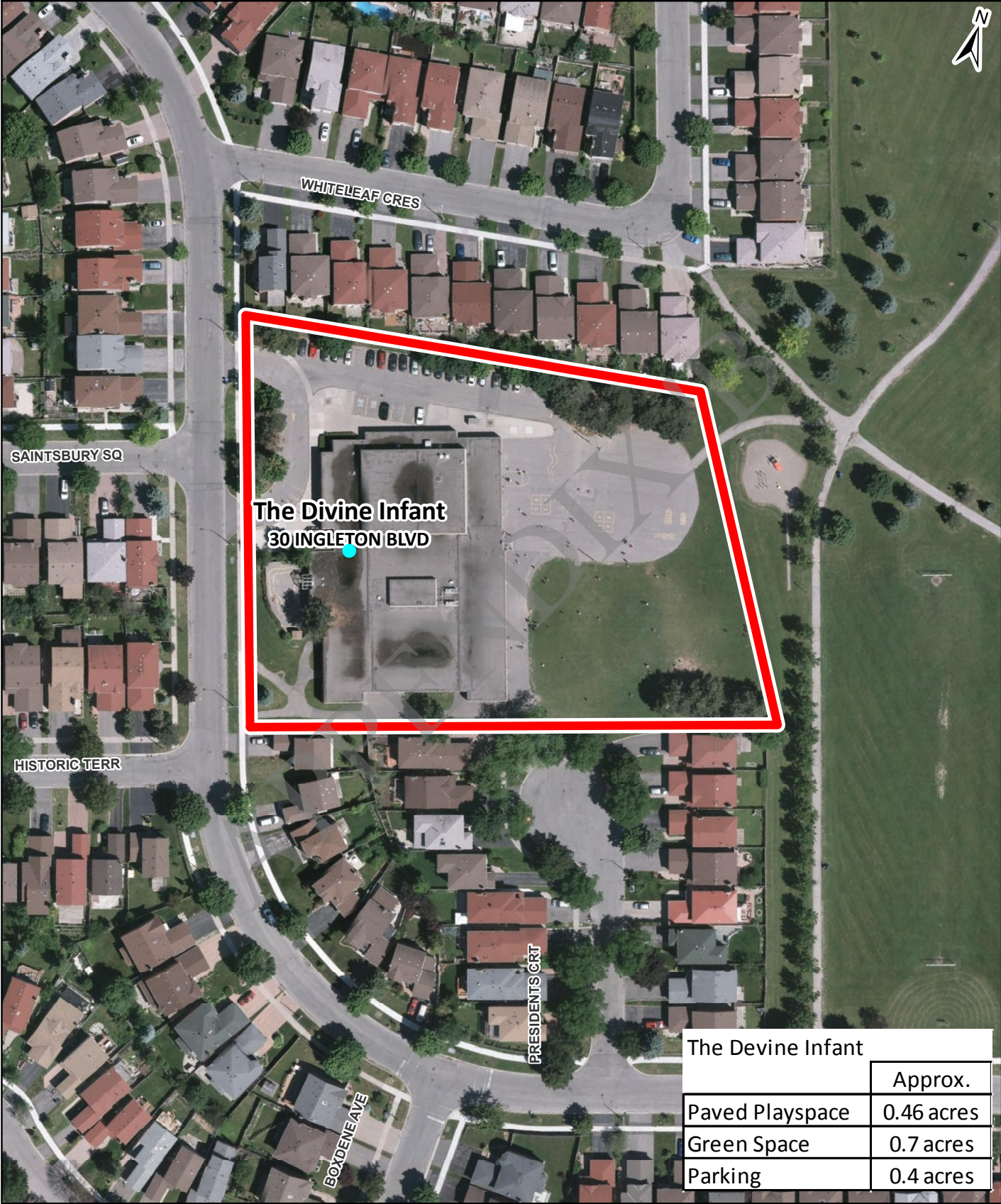



 TCDSB Planning Services
 May 2016

0 0.55 1.1 Km

- | | |
|--------------------------------------|-----------------------|
| E Elementary School | Streets |
| S Secondary School | Railway |
| A Alternative/Adult Education | Water & Rivers |
| B Admin Building | Parks |
| | Hydro Corridor (HEPC) |

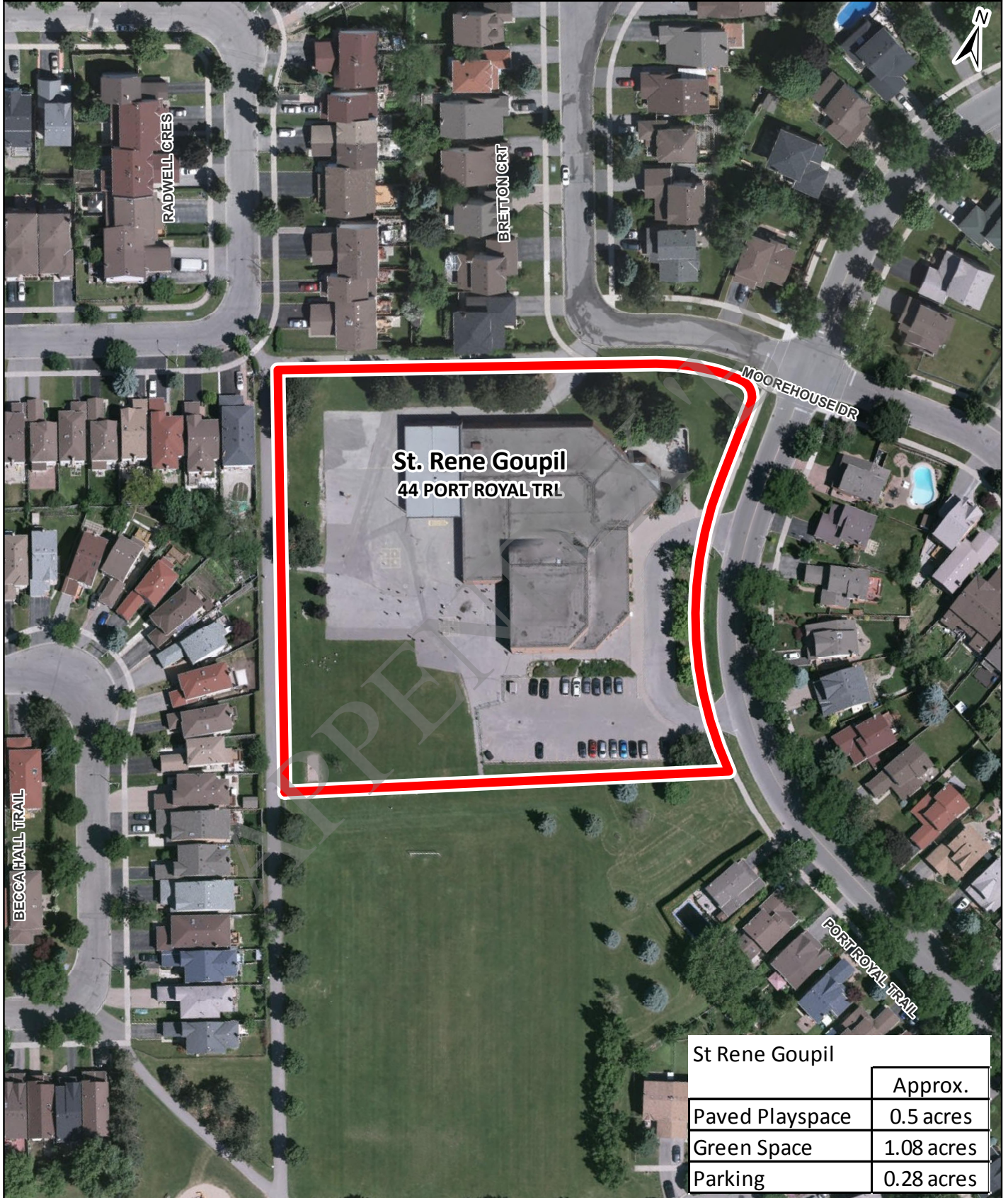
The Divine Infant School Site



The Devine Infant	
	Approx.
Paved Playspace	0.46 acres
Green Space	0.7 acres
Parking	0.4 acres



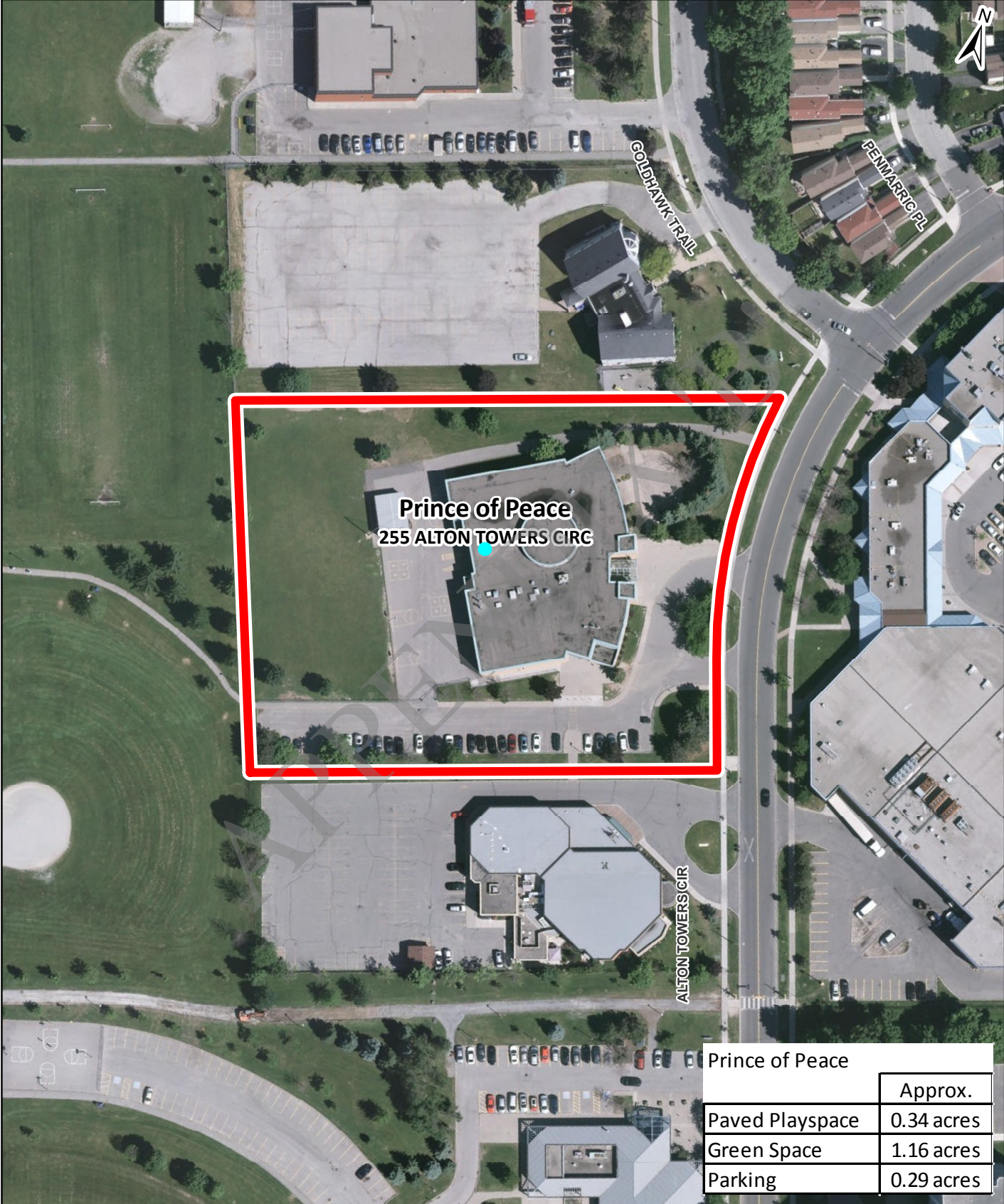
St Rene Goupil School Site



St Rene Goupil	
	Approx.
Paved Playspace	0.5 acres
Green Space	1.08 acres
Parking	0.28 acres

0 50 100 Meters

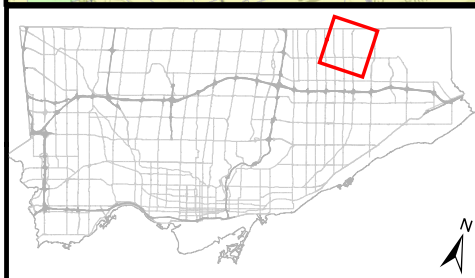
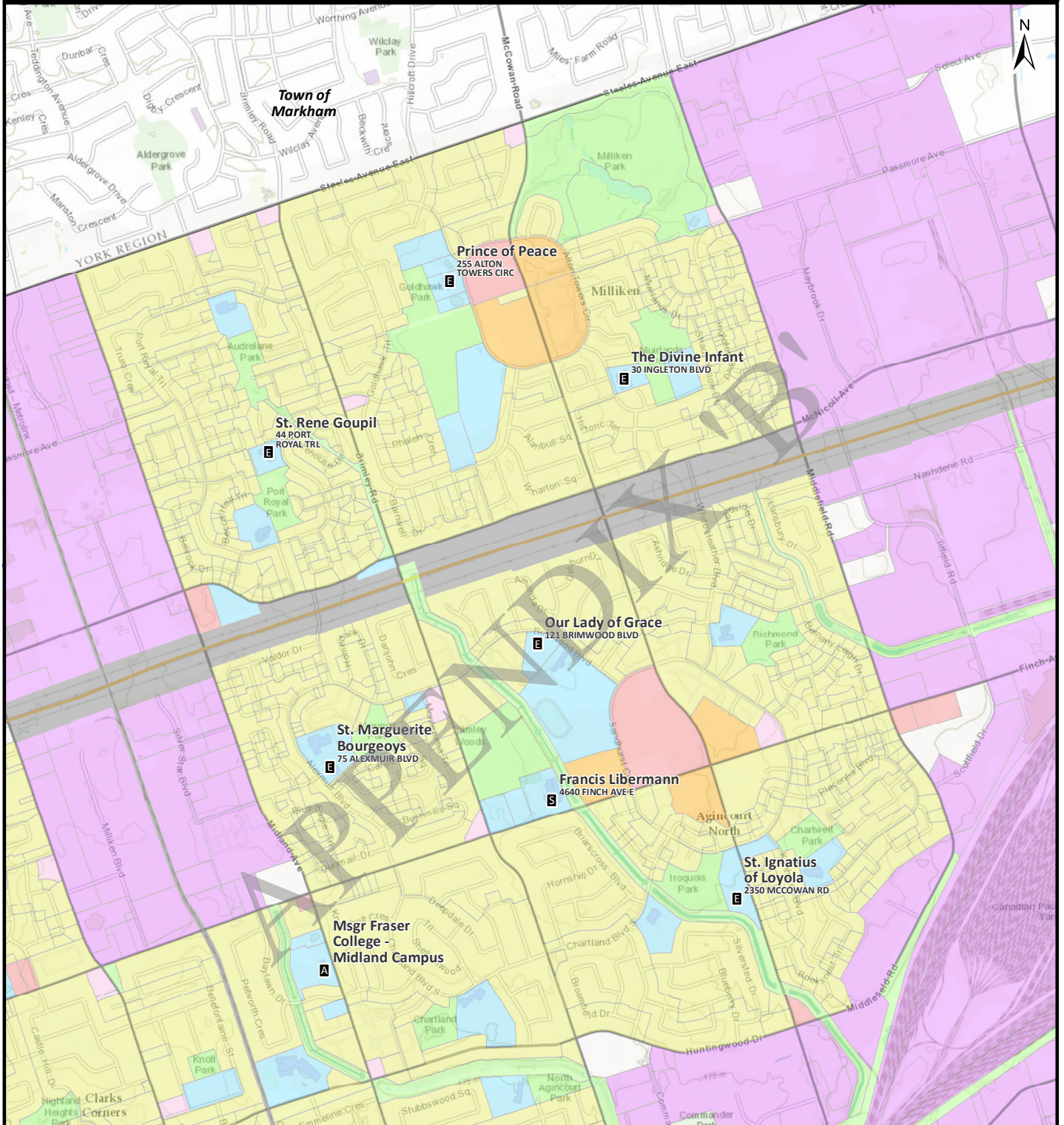
Prince of Peace School Site



Prince of Peace	
	Approx.
Paved Playspace	0.34 acres
Green Space	1.16 acres
Parking	0.29 acres



Land Use Map




 TCDSB Planning Services
 May 2016

0 0.5 1 Km

- E** Elementary School
- S** Secondary School
- A** Alternative/Adult Education
- B** Admin Building

Land Use

-  Residential
-  Residential Apartment
-  Open Space
-  Utility and Transportation
-  Commercial
-  Commercial Residential
-  Commercial Residential Employment
-  Employment Industrial
-  Institutional

Planning Map

Town of Markham

Prince of Peace
255 ALTON TOWERS CIR
Prince of Peace Elementary School

St. Rene Goupil
44 PORT ROYAL TR
St. Rene Goupil Catholic Elementary School

The Divine Infant
30 INGELTON BLVD
The Divine Infant Catholic Elementary School

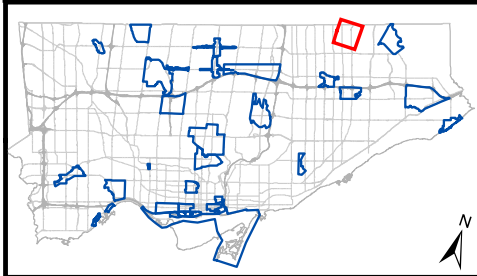
Our Lady of Grace
121 BRIMWOOD BLVD

Legend:







- E Elementary School
- S Secondary School
- A Alternative/Adult Education
- B Admin Building
- Secondary Plan Area
- Streets
- Railway
- Water & Rivers
- Parks
- Hydro Corridor (HEPC)

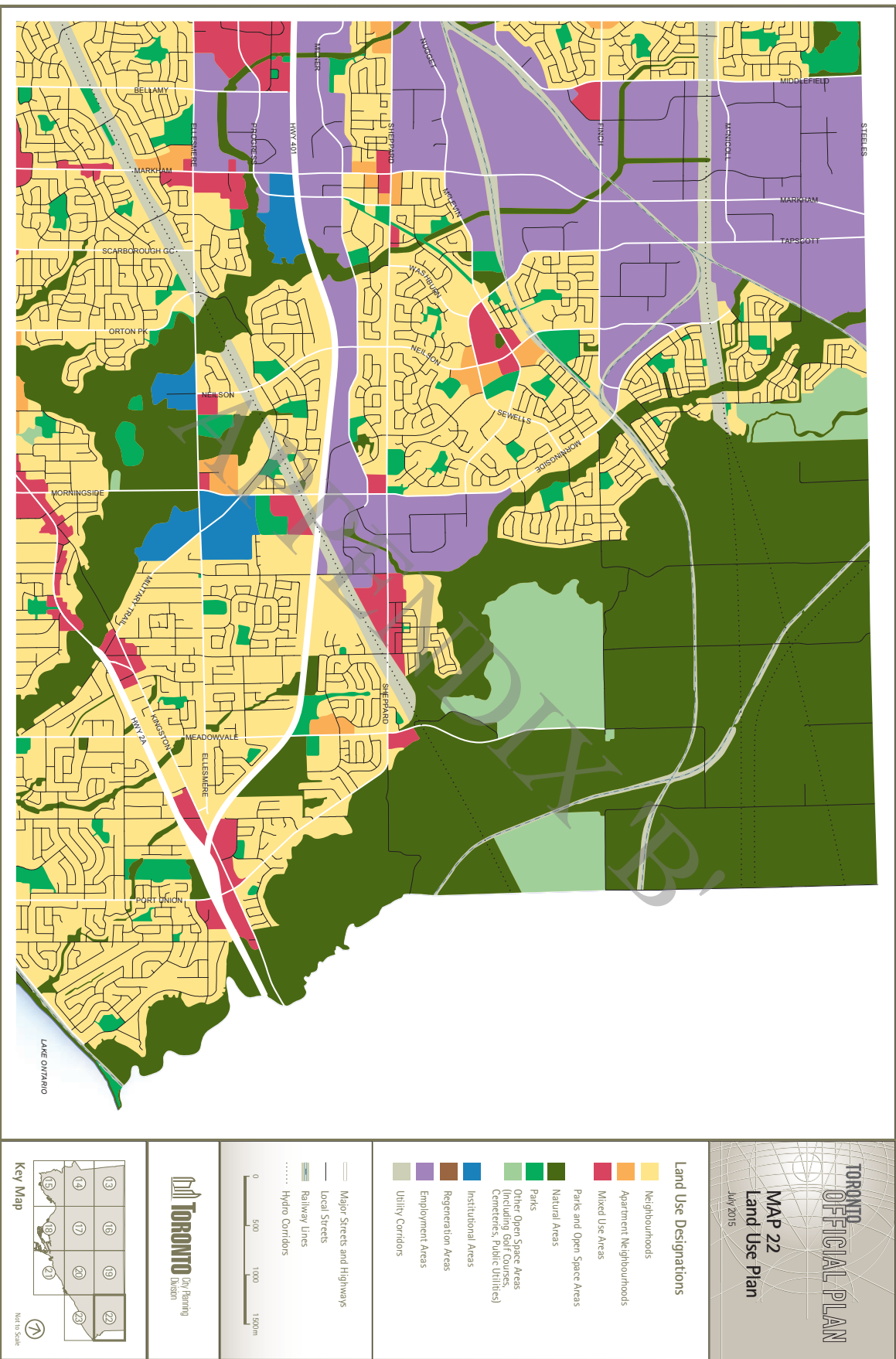
Scale: 0 0.25 0.5 Km

TCDSB Planning Services
May 2016



 TCDSB Planning Services
May 2016

- E** Elementary School
S Secondary School
A Alternative/Adult Education
B Admin Building
 Secondary Plan Area
-  Streets
 Railway
 Water & Rivers
 Parks
 Hydro Corridor (HEPC)



School Code	SFS #	School Name	PANEL	Trustee	Superintendent	OTG - Current	All Grades 2016 Projected	2016 Utilization Rate	Surplus/Shortage of Pupil Places	Classrooms (over 69 sq.m)	Resource Rooms (between 38 and 69 sq. m.)	Special Needs (under 38 sq. m. space)	FDK (over 80 sq. m. total space)	FDK (under 80 sq. m. total space)	Gym floor size (sq. m.)	Auditorium (sq. m.)	Stage	Science Lab (+ Prep)	Ind. Arts	Home Ec.	Auto Shop	Media	Hospitality	Lecture Hall	Lunch room - w. storage and kitchen	Multi-Purpose Room	MT/DD	Computer Lab	Library/ Computer Lab	Purpose Built Daycare	Additional Daycare Use of Classrooms
416	3606	Prince of Peace	ELEM	Timuan	7	323	338	98%	5		2	11	2	2	237		No											1		1	1
408	4450	St. Rene Gospel	ELEM	Timuan	7	242	87	36%	155	10			1	1	330		Yes													1	1
414	4602	The Divine Infant	ELEM	Timuan	7	306	131	43%	175	11	2			1	229		Yes													1	1
						871	536	62%	335																						

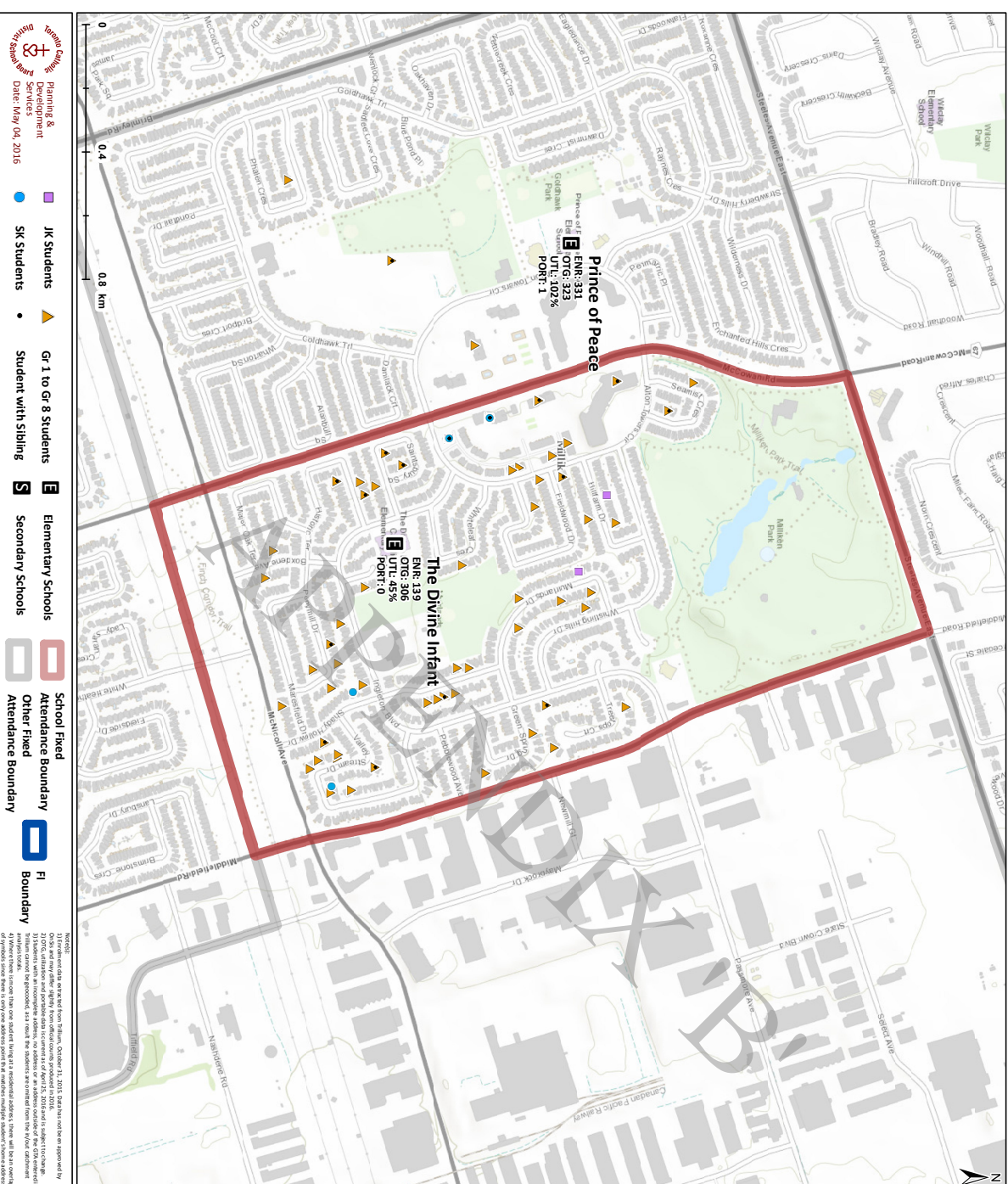
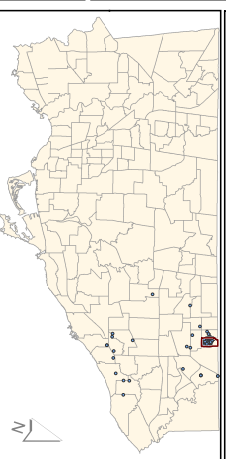
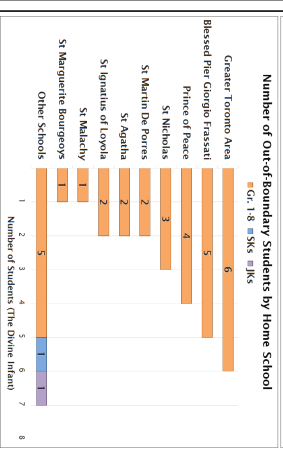
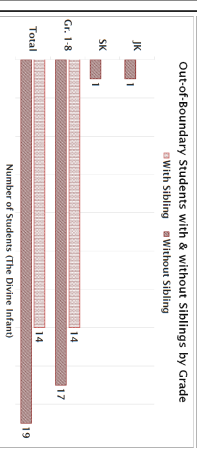
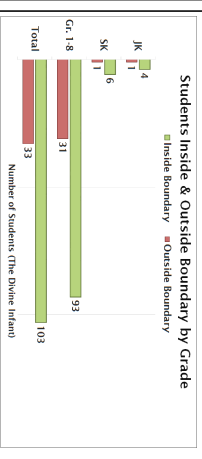
APPENDIX B

	FCI %(5 year Ministry Inspection)	FCI (%) 2020
Prince of Peace CS	33.06	58.85
St Rene Goupil CS	19.99	46.41
The Divine Infant	22.16	39.89

APPENDIX 'B'

THE DIVINE INFANT Inside or Outside Boundary Analysis October 31, 2015 Trillium Enrolment

Enrolment Summary (The Divine Infant)			
JK	SK	Gr 1-8	Total
5	7	124	136

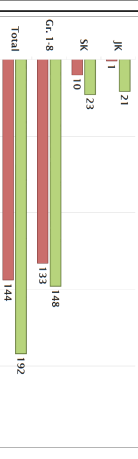


Planning & Development
Date: May 04, 2016

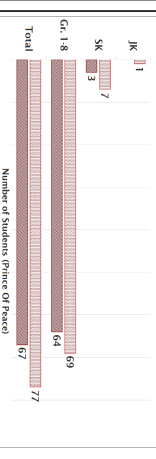
PRINCE OF PEACE Inside or Outside Boundary Analysis October 31, 2015 Trillium Enrolment

Enrolment Summary (Prince Of Peace)				
JK	SK	Gr. 1-8	Total	
22	35	281	336	

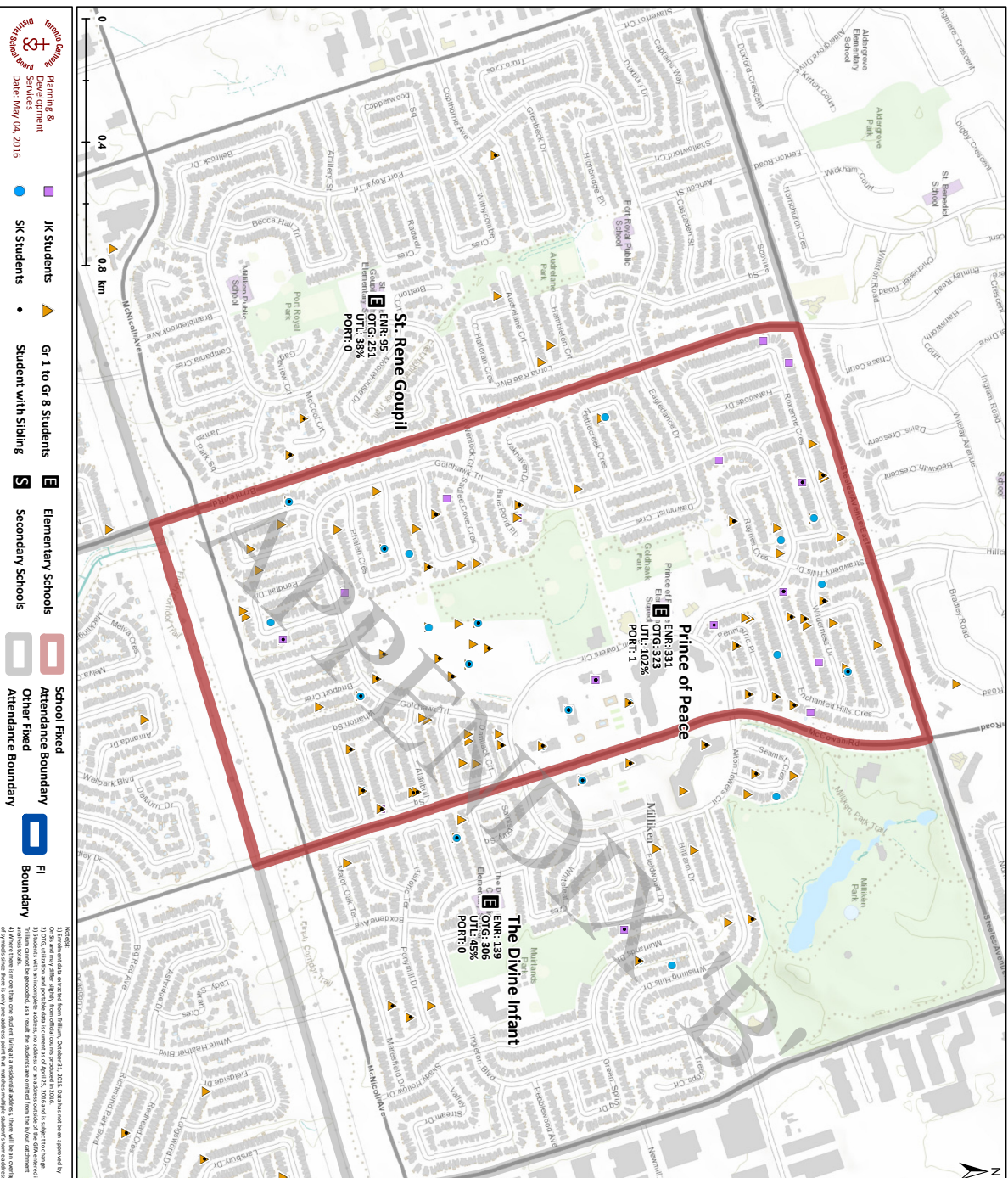
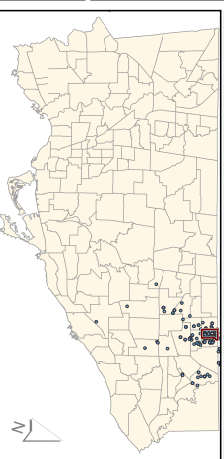
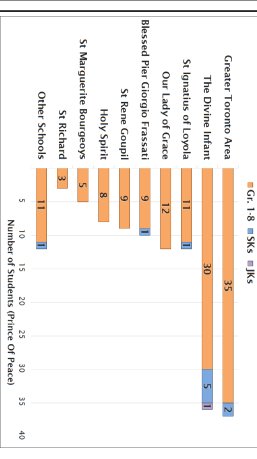
Students Inside & Outside Boundary by Grade



Out-of-Boundary Students with & without Siblings by Grade



Number of Out-of-Boundary Students by Home School



Legend:

- JK Students
- SK Students
- Gr. 1 to Gr. 8 Students
- Student with Sibling
- Elementary Schools
- Secondary Schools
- School Fixed Attendance Boundary
- Other Fixed Attendance Boundary
- FI Boundary

Scale: 0, 0.4, 0.8 km

North Arrow: N

Map Date: May 04, 2016

School Name	Average Distance	Minimum Distance	Maximum Distance
St Rene Goupil	385	90	873
Prince Of Peace	465	127	975
The Devine Infant	396	120	769

	Utilities	Utilities/sq.ft.	Utilities/ student
HOLY REDEEMER	34,305	1.44	426.15
OUR LADY OF GUADALUPE	45,867	1.95	276.30
ST MATTHIAS	36,321	1.52	195.27
ST TIMOTHY	106,167	1.82	189.75
Grand Total	222,659		

APPENDIX 'B'

LOC #	SCHOOL NAME	SQS AREA	ADDRESS	# of Useable Parking Spaces
219	Blessed Pier Giorgio Frassati	5	8 Seasons Dr	36
416	Prince Of Peace	5	255 Alton Towers Circle	25
408	St.Rene Goupil	5	44 Port Royal Trail	26
414	The Divine Infant	5	30 Ingleton Boulevard	30

School Name	PANEL	Trustee	Superintendent	OTG - Current	All Grades 2016 Projected	2016 Utilization Rate	Surplus/Shortage Pupil Places
Prince of Peace	ELEM	Tanuan	7	323	318	98%	5
St. Rene Goupil	ELEM	Tanuan	7	242	87	36%	155
The Divine Infant	ELEM	Tanuan	7	306	131	43%	175

APPENDIX 'B'

The Divine Infant	
a) Describe the number and type of teaching staff, non-teaching staff, support staff, itinerant staff, and administration staff at the school:	<ul style="list-style-type: none"> • 9 Teaching staff • E.A.'s, 1 CWW, 2 Lunchtime supervisors
b) Describe the course and program offerings at the school:	<ul style="list-style-type: none"> • 3 ISP Classes –Behavior, LD, Deaf and hard of Hearing
c) Describe the specialized service offerings at the school (e.g. cooperative placements, guidance counseling, etc.)	<ul style="list-style-type: none"> • Guidance Social Work, PT, Psychology, Speech and Language
d) Current Grade configuration of the school (e.g. junior kindergarten to Grade 6, junior kindergarten to Grade 12, etc.)	<ul style="list-style-type: none"> • JK to Grade 8
e) Current Grade organization of the school (e.g. number of combined grades, etc.)	<ul style="list-style-type: none"> • 7 combined grades • FDK, 1/2, 2/3, 3/4, 5, 6/7, 7/8 ESL, Spec Ed, Behaviour, Deaf & Hard of Hearing, LD • 2 E.A.'s, 1 CWW, 2 Lunchtime supervisors, Family Daycare Staff: Behaviour, Deaf and Hard of Hearing, LD.
f) Number of out-of-area students	<ul style="list-style-type: none"> • 33 out-of-area students
g) Utilization factor/classroom usage	<ul style="list-style-type: none"> • All classrooms used by school and family daycare
h) Summary of previous five years enrolment and 10 year enrolment projection by grade program	<ul style="list-style-type: none"> • Please see attached individual School Profile Sheet for enrolment projections
i) Current extracurricular activities	<ul style="list-style-type: none"> • All extra-curricular sports and programming • Extra-Curricular: Basketball, Jr. Basketball, Volleyball, Jr. Volleyball, Cross Country, Track and Field, Soccer, primary Soccer, Social Justice Club, Math

	Club, Reading Club, W5H, jr. W5H, Sharelife, Out of the Cold, Flag Football, Talent Show, CSAC functions, Family Pasta Night, Family Movie Night, Parent Engagement Workshops (2), Public Health Nurse Parent Workshop. Me to We, Lake St. George Trip(Outdoor Education)
--	--

St. Rene Goupil	
a) Describe the number and type of teaching staff, non-teaching staff, support staff, itinerant staff, and administration staff at the school:	<ul style="list-style-type: none"> All our teachers are OCT members. We also have 2 EAs; one permanent and <i>one itinerant EA who will not be back with us next year.</i> One school secretary, a head caretaker and an evening one. One school lunch supervisor and one FDK lunchroom supervisor. This year, we have opened up the school and invited a variety of partnerships with colleges and universities – thus, we have faculty students who do their practicum in the following areas/programs all year round: EA, ECE, CYW, teacher (student teachers) and student nurses from Ryerson University
b) Describe the course and program offerings at the school:	<ul style="list-style-type: none"> The school is an elementary school offering the Ontario Ministry of Education program from JK to G8. St. René Goupil has a complement of very good and motivated students and a variety of educational programs could be offered ... how about considering an elementary IB program? ... Or an elementary Arts program (e.g., a school of the Arts – a school program similar to the one that is offered by TDSB at Yonge and Sheppard!).
c) Describe the specialized service offerings at the school (e.g. cooperative placements, guidance counseling, etc.)	<ul style="list-style-type: none"> We have an itinerant guidance counsellor who is supposed to be visiting the school but is rarely seen, only in emergency situations if we are fortunate to get in touch with him. He does a program with the intermediate students at one point in the year. I suppose other schools have more pressing needs that require his attendance there. We also have one social worker who is regularly and frequently visiting our school as she has a number of cases to look after here at our school. We offer cooperative placements to our sister high schools and have high school students doing their placement here.
d) Current Grade configuration of the school (e.g. junior kindergarten to Grade 6, junior kindergarten to Grade 12, etc.)	<ul style="list-style-type: none"> JK to Grade 8

e) Current Grade organization of the school (e.g. number of combined grades, etc.)	
f) Number of out-of-area students	<ul style="list-style-type: none"> • 35 out-of-area students
g) Utilization factor/classroom usage	<ul style="list-style-type: none"> • All classrooms are utilized most of the time. We also have a daycare operating on our premises – morning and after school programs offered.
h) Summary of previous five years enrolment and 10 year enrolment projection by grade program	<ul style="list-style-type: none"> • Please see attached individual School Profile Sheet for enrolment projections
i) Current extracurricular activities	<ul style="list-style-type: none"> • Extracurricular activities as allowed/popular within an elementary setting. We offer badminton and volleyball practices which are both popular with our student population. Also, our gym has permit on a regular basis during the week (after school hours) as well as during the week-ends.
Other:	<p>If the above will be information used in deciding the fate of some of our undersubscribed schools, I would like to propose the following:</p> <p>has any thought(s) been given to amalgamate schools with low enrollments and re-distribute the student population in these schools so that each of the school affected will be able to offer classes in one division?</p> <p>For example, should we have 3 schools with low enrolment within a certain area, the number of students could be combine to populate single grades within each of the 3 divisions and each division could be assigned one of the school buildings. There will be a need to change some bussing arrangements but the presence of catholic schools in the neighborhood would be preserved. Also the number of combined grades would be reduced. There could be a saving in the number of administrators needed to look after the 3 buildings as well!</p>

Prince of Peace	
a) Describe the number and type of teaching staff, non-teaching staff, support staff, itinerant staff, and administration staff at the school:	<p>ELP 1</p> <p>ELP 2</p> <p>Grade 1</p> <p>Grade 2</p> <p>Grade 2/3</p> <p>Grade 3</p> <p>Grade 3/4</p> <p>Grade 4/5</p> <p>Grade 5/6</p> <p>Grade 6</p> <p>Grade 6/7</p> <p>Grade 7/8</p> <p>Grade 8</p> <p>M. E. Teacher</p> <p>Special Education (0.5)</p> <p>Special Education</p> <p>Special Education</p> <p>(pm) FSL (am)</p> <p>Educational Assistants</p> <p>FSL</p> <p>Physical Education (0.8)</p> <p>Librarian (0.5)</p> <p>Vocal and</p> <p>Instrumental</p> <p>Lunchtime Supervisor</p> <p>Head Custodian</p> <p>Assistant</p> <p>Secretary</p> <p>Clerk Typist (0.2)</p> <p>Principal</p>
b) Describe the course and program offerings at the school:	<ul style="list-style-type: none"> Course program: regular K-8

c) Describe the specialized service offerings at the school (e.g. cooperative placements, guidance counseling, etc.)	<ul style="list-style-type: none"> Specialized services: ME class, Guidance, Social Work, we accept co-op students from local high schools
d) Current Grade configuration of the school (e.g. junior kindergarten to Grade 6, junior kindergarten to Grade 12, etc.)	<ul style="list-style-type: none"> JK to Grade 8
e) Current Grade organization of the school (e.g. number of combined grades, etc.)	<p>Below is a list of sports and activities that we have offered:</p> <ul style="list-style-type: none"> Cross country Primary Christmas Concert Junior/Intermediate Musical Intermediate W5H Chess Junior & Senior Volleyball Basketball Soccer Primary Indoor Soccer Track & Field <p>Our school is also very proud of our Student Government who demonstrate their leadership on a regular basis.</p>
f) Number of out-of-area students	<ul style="list-style-type: none"> 144 out-of-area students
g) Utilization factor/classroom usage	<ul style="list-style-type: none"> All classrooms are used except one
h) Summary of previous five years enrolment and 10 year enrolment projection by grade program	<ul style="list-style-type: none"> Please see attached individual School Profile Sheet for enrolment projections
i) Current extracurricular activities	



COMMUNITY USE OF SCHOOLS (PERMITS)

PRINCE OF PEACE CS

Participation

Number of permit hours	1,583.0
Number of participants	23,556
Number of Permit Occurrences	400

Date - School	Customer	Facility
02/09/2016 7:00PM - 9:00PM - Prince Of Peace Catholic School	PRINCE OF PEACE CHURCH	Staff Room - 217
02/09/2016 7:00PM - 9:00PM - Prince Of Peace Catholic School	PRINCE OF PEACE CHURCH	Staff Room - 217
02/09/2016 6:00PM -10:30PM - Prince Of Peace Catholic School	Goldhawk Dance Group	Multi Purpose Room - 107
02/08/2016 6:00PM -10:30PM - Prince Of Peace Catholic School	Goldhawk Dance Group	Multi Purpose Room - 107
02/06/2016 9:00AM - 4:00PM - Prince Of Peace Catholic School	TCDSB - International Languages	Classroom - 119
02/06/2016 9:00AM - 4:00PM - Prince Of Peace Catholic School	TCDSB - International Languages	Classroom - 208
02/06/2016 9:00AM - 4:00PM - Prince Of Peace Catholic School	TCDSB - International Languages	Classroom - 209
02/06/2016 9:00AM - 4:00PM - Prince Of Peace Catholic School	TCDSB - International Languages	Classroom - 210
02/06/2016 9:00AM - 4:00PM - Prince Of Peace Catholic School	TCDSB - International Languages	Classroom - 211
02/06/2016 9:00AM - 4:00PM - Prince Of Peace Catholic School	TCDSB - International Languages	Classroom - 212
02/06/2016 9:00AM - 4:00PM - Prince Of Peace Catholic School	TCDSB - International Languages	Classroom - 213
02/06/2016 9:00AM - 4:00PM - Prince Of Peace Catholic School	TCDSB - International Languages	Kindergarten - 121
02/06/2016 9:00AM - 4:00PM - Prince Of Peace Catholic School	TCDSB - International Languages	Kindergarten - 122

02/06/2016 9:00AM - 4:00PM - Prince Of Peace Catholic School	TCDSB - International Languages	Library - 206
02/06/2016 9:00AM - 4:00PM - Prince Of Peace Catholic School	TCDSB - International Languages	Multi Purpose Room - 107
02/06/2016 9:00AM - 4:00PM - Prince Of Peace Catholic School	TCDSB - International Languages	Science Room - 214
02/06/2016 9:00AM - 4:00PM - Prince Of Peace Catholic School	TCDSB - International Languages	Special Education Room - 215
02/06/2016 9:00AM - 4:00PM - Prince Of Peace Catholic School	TCDSB - International Languages	Staff Room - 217
02/06/2016 4:00PM - 6:00PM - Prince Of Peace Catholic School	TCDSB - International Languages	Hall - 102
02/05/2016 7:00PM - 9:00PM - Prince Of Peace Catholic School	Scouts Canada Greater Toronto Region1	Classroom - 112
02/05/2016 7:00PM - 9:00PM - Prince Of Peace Catholic School	Scouts Canada Greater Toronto Region1	Classroom - 114
02/05/2016 7:00PM - 9:00PM - Prince Of Peace Catholic School	Scouts Canada Greater Toronto Region1	Multi Purpose Room - 107
02/04/2016 12:00PM - 1:00PM - Prince Of Peace Catholic School	CANADIAN BUREAU FOR ADVANCEMENT OF MUSIC-CBAM	ATRIUM
02/04/2016 8:00AM - 9:00AM - Prince Of Peace Catholic School	CANADIAN BUREAU FOR ADVANCEMENT OF MUSIC-CBAM	ATRIUM
02/04/2016 6:00PM - 9:30PM - Prince Of Peace Catholic School	Prince Of Peace Catholic School	Prince Of Peace Catholic School
02/03/2016 6:00PM - 9:00PM - Prince Of Peace Catholic School	PRINCE OF PEACE CHURCH	Multi Purpose Room - 107
02/02/2016 7:00PM - 9:00PM - Prince Of Peace Catholic School	PRINCE OF PEACE CHURCH	Staff Room - 217
02/02/2016 6:00PM -10:30PM - Prince Of Peace Catholic School	Goldhawk Dance Group	Multi Purpose Room - 107
02/01/2016 6:00PM -10:30PM - Prince Of Peace Catholic School	Goldhawk Dance Group	Multi Purpose Room - 107



COMMUNITY USE OF SCHOOLS (PERMITS)

ST. RENE GOUPIL CS

Participation

Number of permit hours	1,588.0
Number of participants	12,236
Number of Permit Occurrences	326

Date - School	Customer	Facility
02/09/2016 6:30PM -10:30PM - St. Rene Goupil Catholic School	Individual Permit	Multi Purpose Room
02/09/2016 6:30PM -10:30PM - St. Rene Goupil Catholic School	Individual Permit	Multi Purpose Room
02/08/2016 7:00PM -10:00PM - St. Rene Goupil Catholic School	William Tsang	Multi Purpose Room
02/07/2016 10:00AM - 3:00PM - St. Rene Goupil Catholic School	The Church of God in Toronto (Scarborough)	Classroom – 117
02/07/2016 10:00AM - 3:00PM - St. Rene Goupil Catholic School	The Church of God in Toronto (Scarborough)	Classroom - 118
02/07/2016 10:00AM - 3:00PM - St. Rene Goupil Catholic School	The Church of God in Toronto (Scarborough)	Classroom - 121
02/07/2016 10:00AM - 3:00PM - St. Rene Goupil Catholic School	The Church of God in Toronto (Scarborough)	Classroom - 124
02/07/2016 10:00AM - 3:00PM - St. Rene Goupil Catholic School	The Church of God in Toronto (Scarborough)	Classroom - 125
02/07/2016 10:00AM - 3:00PM - St. Rene Goupil Catholic School	The Church of God in Toronto (Scarborough)	Multi Purpose Room
02/07/2016 10:00AM - 3:00PM - St. Rene Goupil Catholic School	The Church of God in Toronto (Scarborough)	Staff Room - 104
02/07/2016 3:00PM - 4:00PM - St. Rene Goupil Catholic School	The Church of God in Toronto (Scarborough)	Hall - 102
02/07/2016 3:00PM - 4:00PM - St. Rene Goupil Catholic School	The Church of God in Toronto (Scarborough)	Classroom - 117
02/07/2016 3:00PM - 4:00PM - St. Rene Goupil Catholic School	The Church of God in Toronto (Scarborough)	Classroom - 118

02/07/2016 3:00PM - 4:00PM - St. Rene Goupil Catholic School	The Church of God in Toronto (Scarborough)	Classroom - 121
02/07/2016 3:00PM - 4:00PM - St. Rene Goupil Catholic School	The Church of God in Toronto (Scarborough)	Classroom - 124
02/07/2016 3:00PM - 4:00PM - St. Rene Goupil Catholic School	The Church of God in Toronto (Scarborough)	Classroom - 125
02/07/2016 3:00PM - 4:00PM - St. Rene Goupil Catholic School	The Church of God in Toronto (Scarborough)	Multi Purpose Room
02/07/2016 3:00PM - 4:00PM - St. Rene Goupil Catholic School	The Church of God in Toronto (Scarborough)	Staff Room - 104
02/05/2016 7:00PM -10:00PM - St. Rene Goupil Catholic School	Individual Permit	Multi Purpose Room
02/04/2016 6:30PM -10:30PM - St. Rene Goupil Catholic School	Individual Permit	Multi Purpose Room
02/02/2016 6:30PM -10:30PM - St. Rene Goupil Catholic School	Individual Permit	Multi Purpose Room
02/01/2016 7:00PM -10:00PM - St. Rene Goupil Catholic School	Individual Permit	Multi Purpose Room

APPENDIX 'B'



COMMUNITY USE OF SCHOOLS (PERMITS)

THE DIVINE INFANT CS

Participation

Number of permit hours	2,010.0
Number of participants	22,404
Number of Permit Occurrences	387

02/09/2016 6:00PM -10:00PM - The Divine Infant Catholic School	Individual Permit	Multi Purpose Room - 109
02/09/2016 6:00PM -10:00PM - The Divine Infant Catholic School	Individual Permit	Multi Purpose Room - 109
02/08/2016 6:00PM -10:00PM - The Divine Infant Catholic School	A Smooth Way to Success	Multi Purpose Room - 109
02/07/2016 9:30AM - 1:30PM - The Divine Infant Catholic School	Scarborough Mandarin Alliance Church	Atrium
02/07/2016 9:30AM - 1:30PM - The Divine Infant Catholic School	Scarborough Mandarin Alliance Church	Classroom - 132
02/07/2016 9:30AM - 1:30PM - The Divine Infant Catholic School	Scarborough Mandarin Alliance Church	Library - 112
02/07/2016 9:30AM - 1:30PM - The Divine Infant Catholic School	Scarborough Mandarin Alliance Church	Multi Purpose Room - 109
02/07/2016 9:30AM - 1:30PM - The Divine Infant Catholic School	Scarborough Mandarin Alliance Church	Office - 103
02/06/2016 6:30PM -10:00PM - The Divine Infant Catholic School	Scarborough Mandarin Alliance Church	Atrium
02/06/2016 6:30PM -10:00PM - The Divine Infant Catholic School	Scarborough Mandarin Alliance Church	Multi Purpose Room - 109
02/05/2016 5:00PM -11:00PM - The Divine Infant Catholic School	The Divine Infant Catholic School	Atrium

02/05/2016 5:00PM -11:00PM - The Divine Infant Catholic School	The Divine Infant Catholic School	Multi Purpose Room - 109
02/05/2016 5:00PM -11:00PM - The Divine Infant Catholic School	The Divine Infant Catholic School	Staff Room - 104
02/05/2016 5:00PM -11:00PM - The Divine Infant Catholic School	The Divine Infant Catholic School	Stage - 109B
02/04/2016 6:00PM -10:00PM - The Divine Infant Catholic School	A Smooth Way to Success	Multi Purpose Room - 109
02/02/2016 6:00PM -10:00PM - The Divine Infant Catholic School	Individual Permit	Multi Purpose Room - 109
02/01/2016 6:00PM -10:00PM - The Divine Infant Catholic School	A Smooth Way to Success	Multi Purpose Room - 109

APPENDIX 'B'

2016-2017 School Accommodation Review Tenants/Licencees

SCHOOL	TENANT/LICENSEE	USE	LEASED (exclusive space) and/or LICENCED (shared space) PREMISES	TERM and/or RENEWAL TERM OF LEASE and/or LICENSE	LEASE EXPIRY DATE
Prince of Peace	Bartling and Best Child Care Centre	Before and After School Program	Room 119	10 month self-renewing Licence Agreement	
St. Rene Goupil	Heritage Home Child Care Services	Full Day Childcare Centre	Rooms 129, 129 A & B (2,116.72 sq.ft.)	Lease	August 31, 2016
	Heritage Home Child Care Services	Before and After School Program	Room 130, Library	10 month self-renewing Licence Agreement	
The Divine Infant	Family Day Care Services	Full Day Childcare Centre	135, 135A (633.44 sq.ft.)	Lease	August 31, 2016
	Family Day Care Services	Before and After School Program	Room 132	10 month self-renewing Licence Agreement	