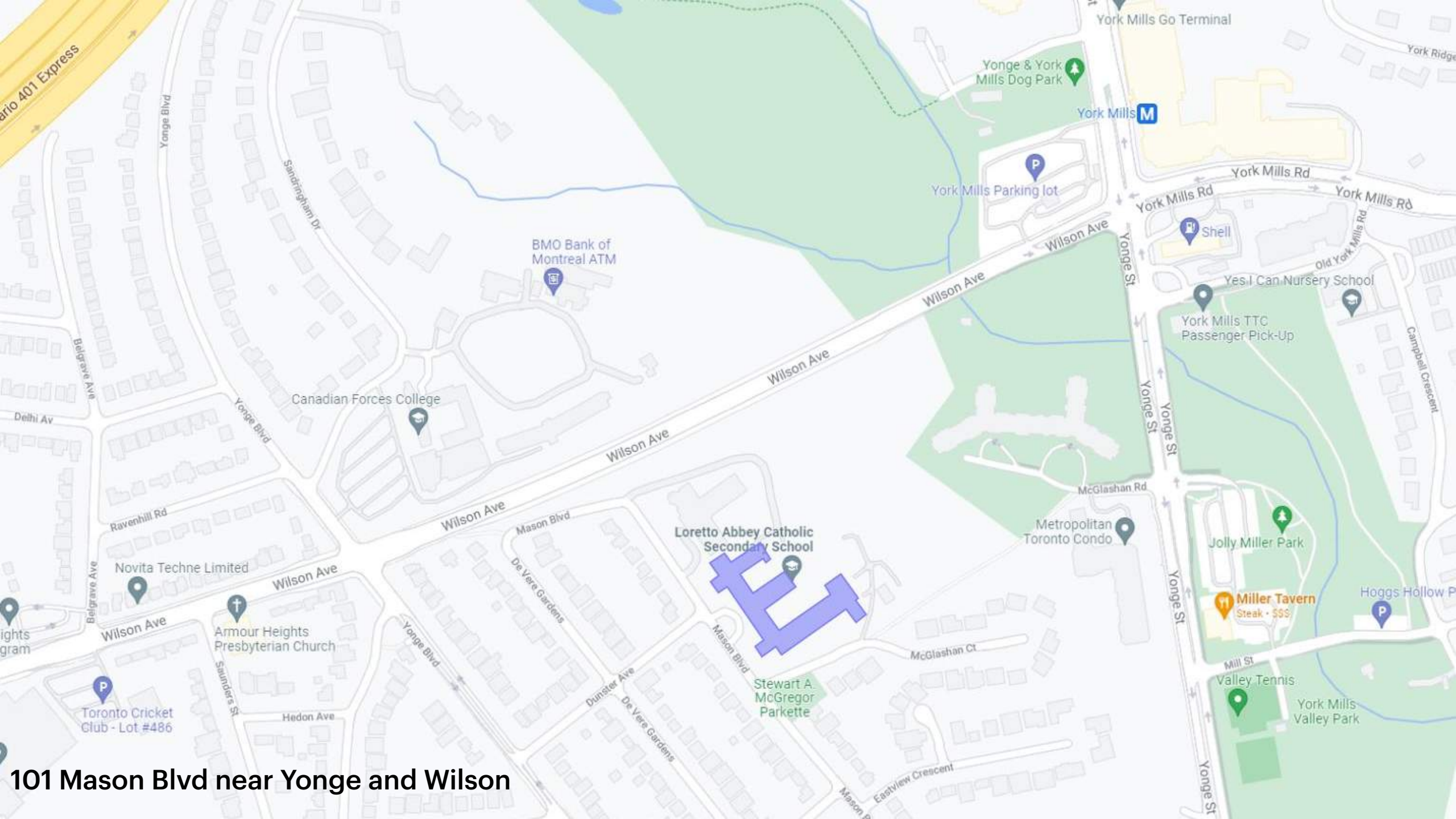


# Loretto Abbey Catholic School Retrofit and Addition

Local Design Committee Meeting 3  
October 10, 2023

**diamond  
schmitt**

**MOFFET &  
DUNCAN**  
architects inc.



101 Mason Blvd near Yonge and Wilson

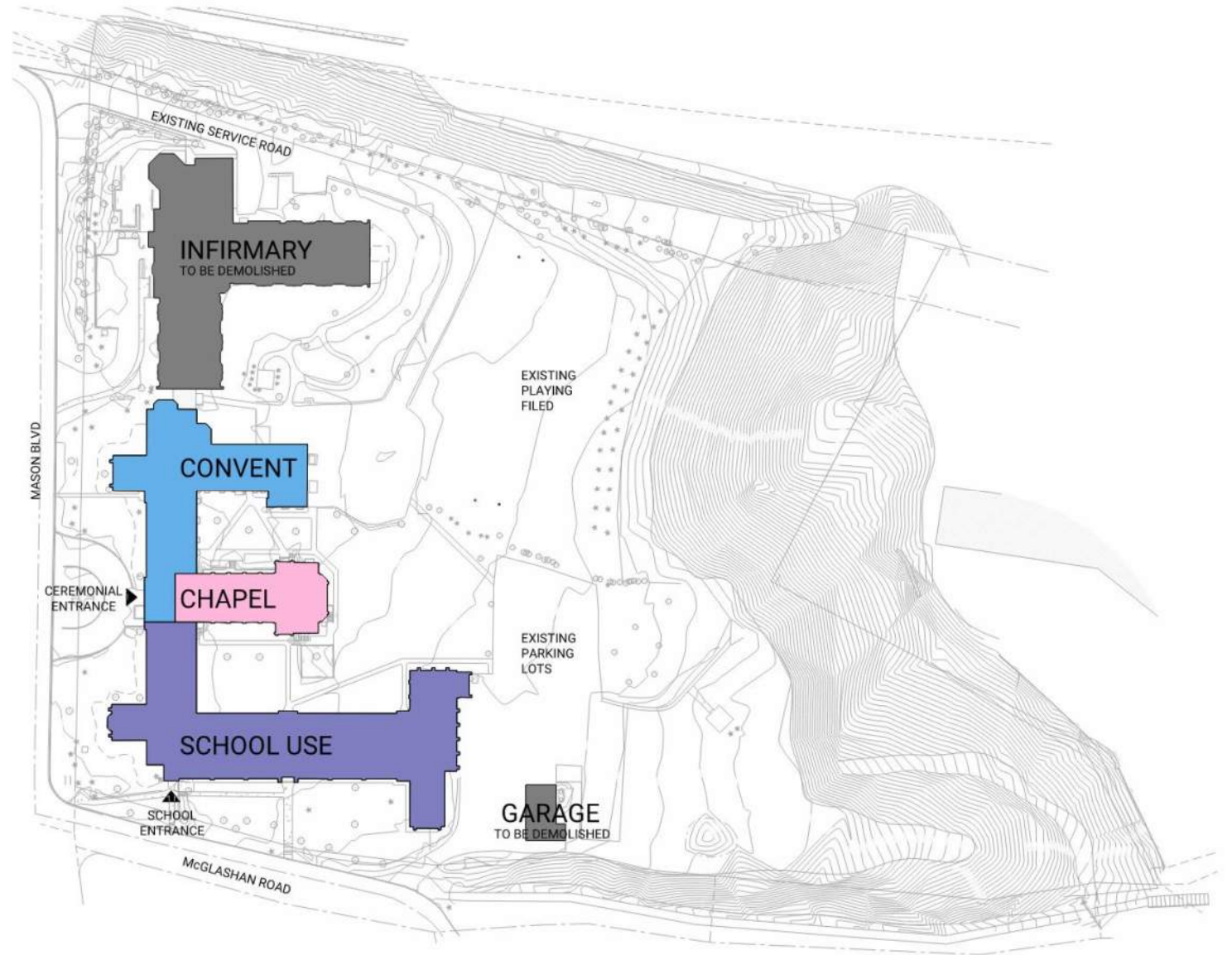






# Existing Building Recent Uses

- June 1968 school boarding closed
- June 1985 last elementary classes
- Sept 1987 Metropolitan Separate school Board administers school as a girls high school
- June 1989 Infirmary is opened
- March 2011 bought by TCDSB



# Community and Project Priorities

- **School expansion into convent and addition**
- **Instruction space increase from 5000 sq m to 6500 sq m**
- **Provision of athletic facility with new gym**
- **New welcoming entry with drop off**
- **Appropriate sizing of undersized classrooms**
- **Locating administration near main entrance**
- **Grouping of specialty classrooms such as Science and Art**
- **Include for accessibility**

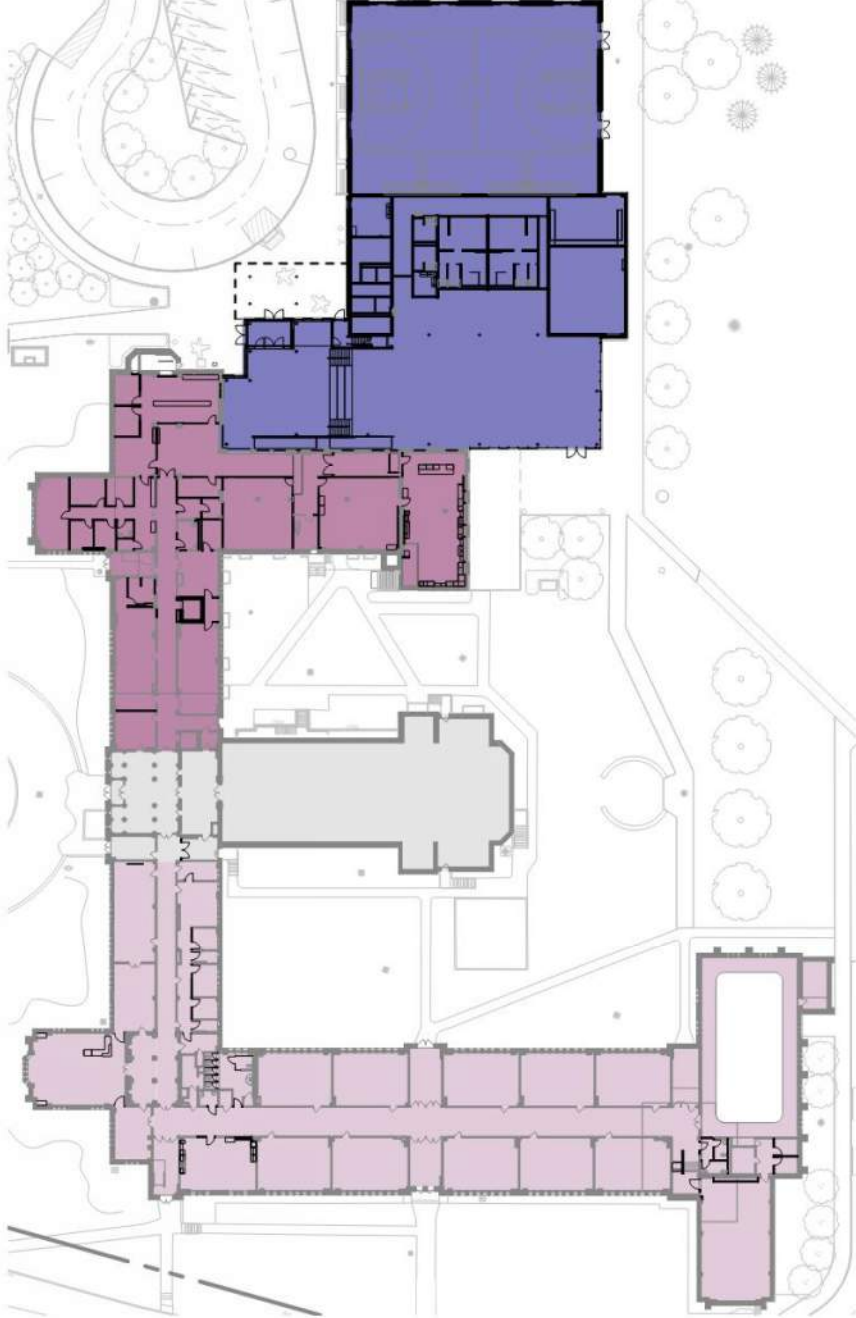
# Community and Project Priorities

- **Incorporate 21<sup>st</sup> century learning spaces throughout building including:**
  - breakout or seminar rooms
  - informal seating areas and gathering spaces
  - increased access to technology
  - increased interior glazing for passive supervision
  - connection to exterior (visual and access)
  - flexible learning spaces
  - movable furniture
  - white boards, pin boards and student displays

# Project Scope

## PROJECT SCOPE

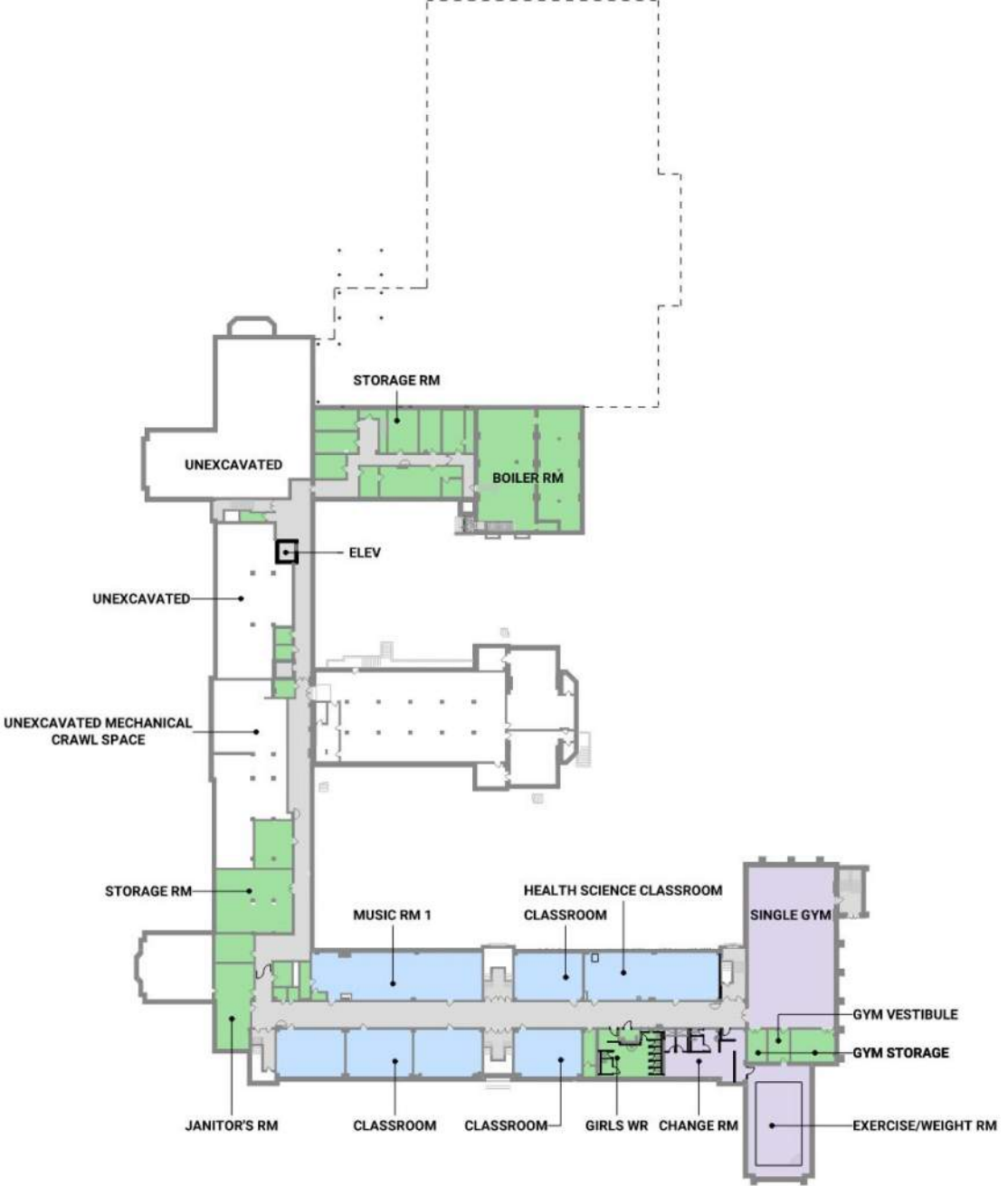
- ADDITION
- EXISTING TO REMAIN
- MAJOR RENOVATION
- MINOR RENOVATION



# Level 1 Plan

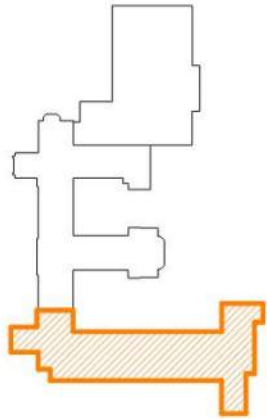
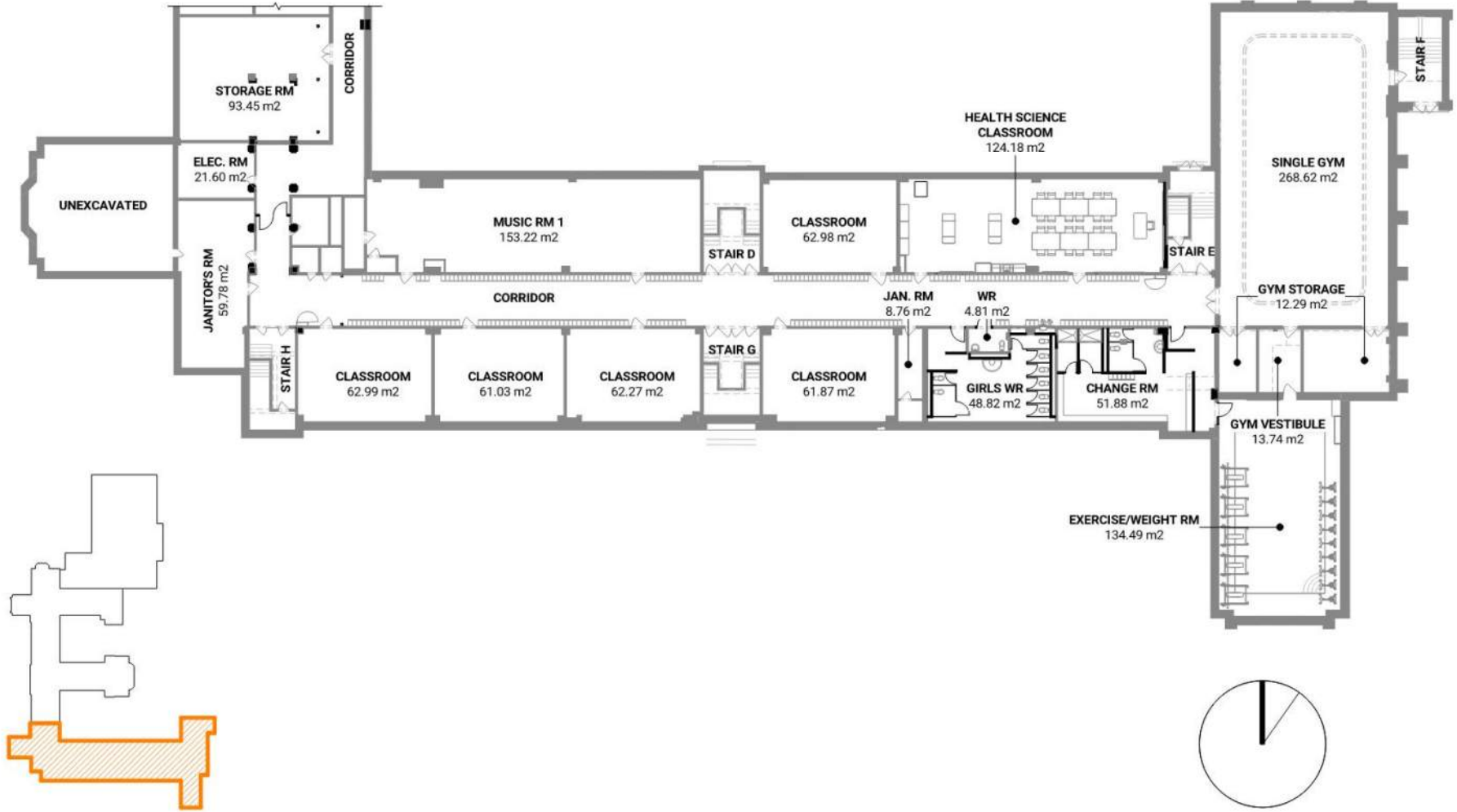
## SPACE FUNCTION TYPE

- INSTRUCTIONAL SPACE - ATHLETIC
- INSTRUCTIONAL SPACE - CLASSROOMS
- OPERATIONAL SPACE - GENERAL
- SCHOOL CIRCULATION

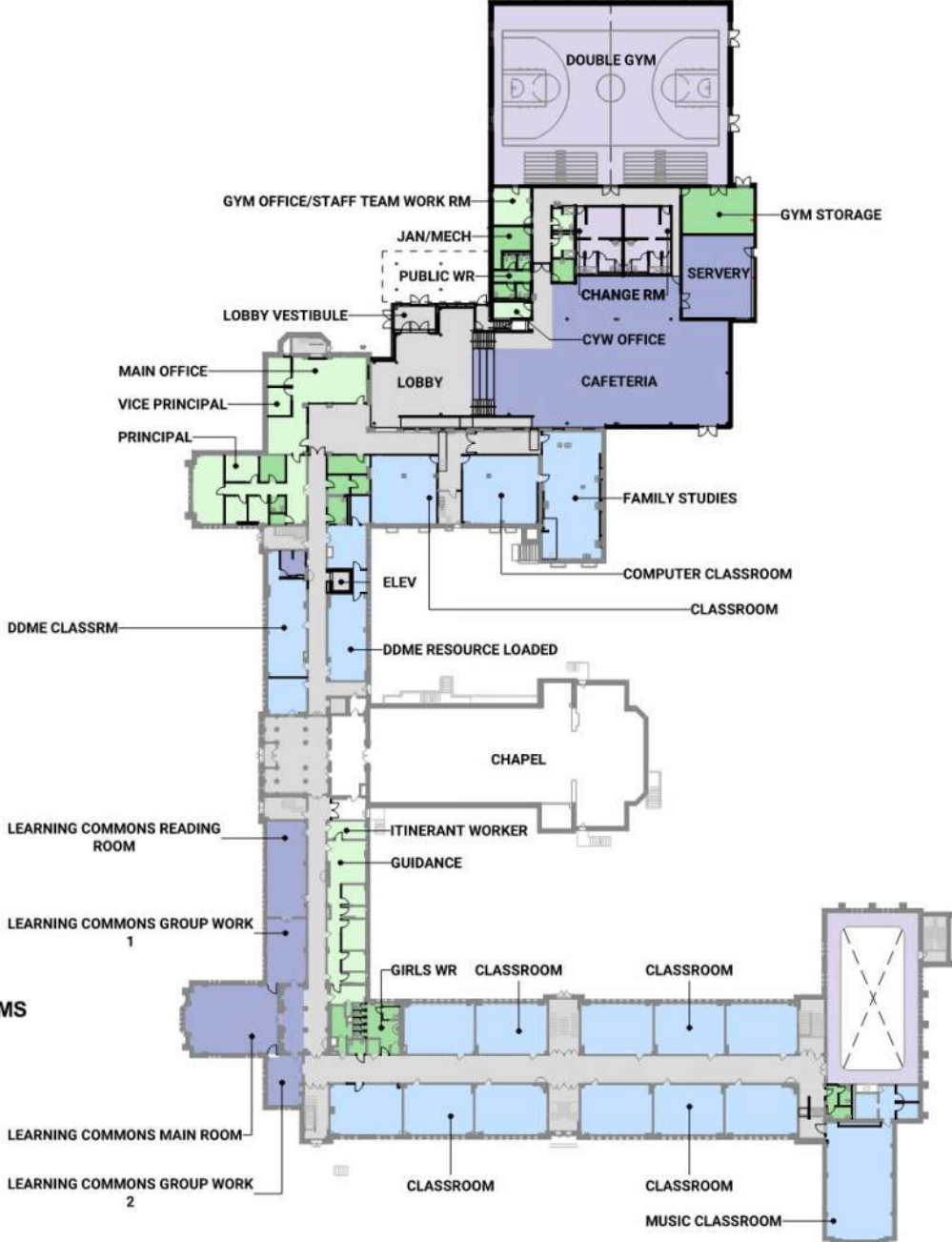




# Level 1 plan: south school wing



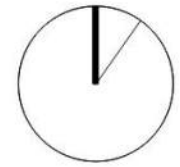
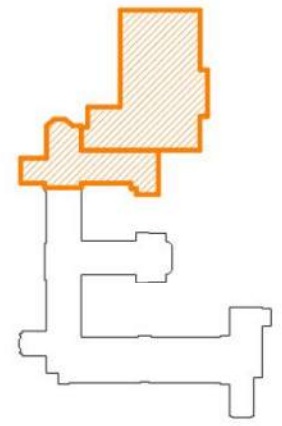
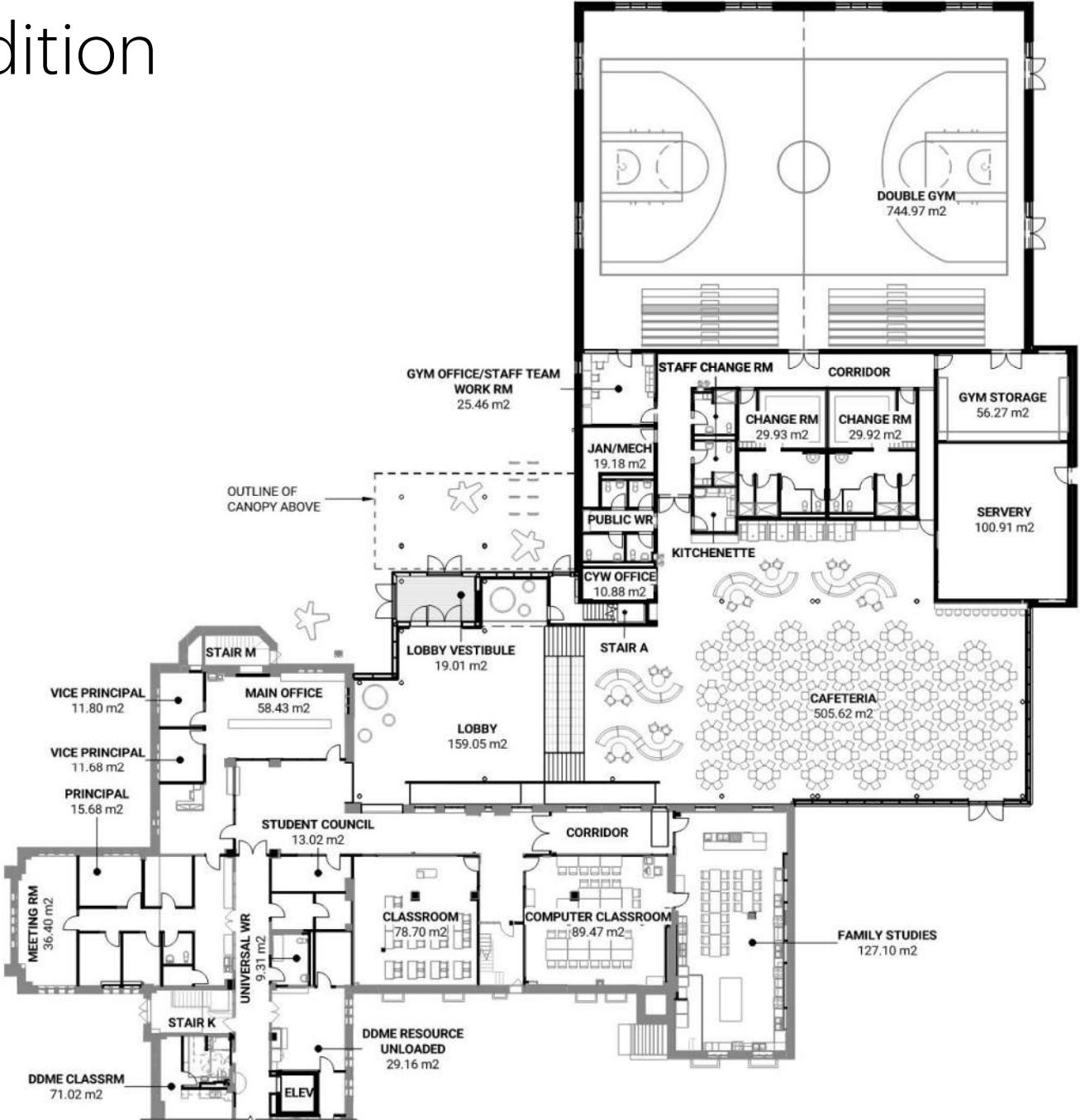
# Level 2 Plan



## SPACE FUNCTION TYPE

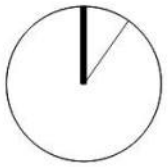
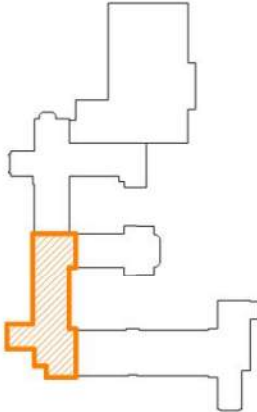
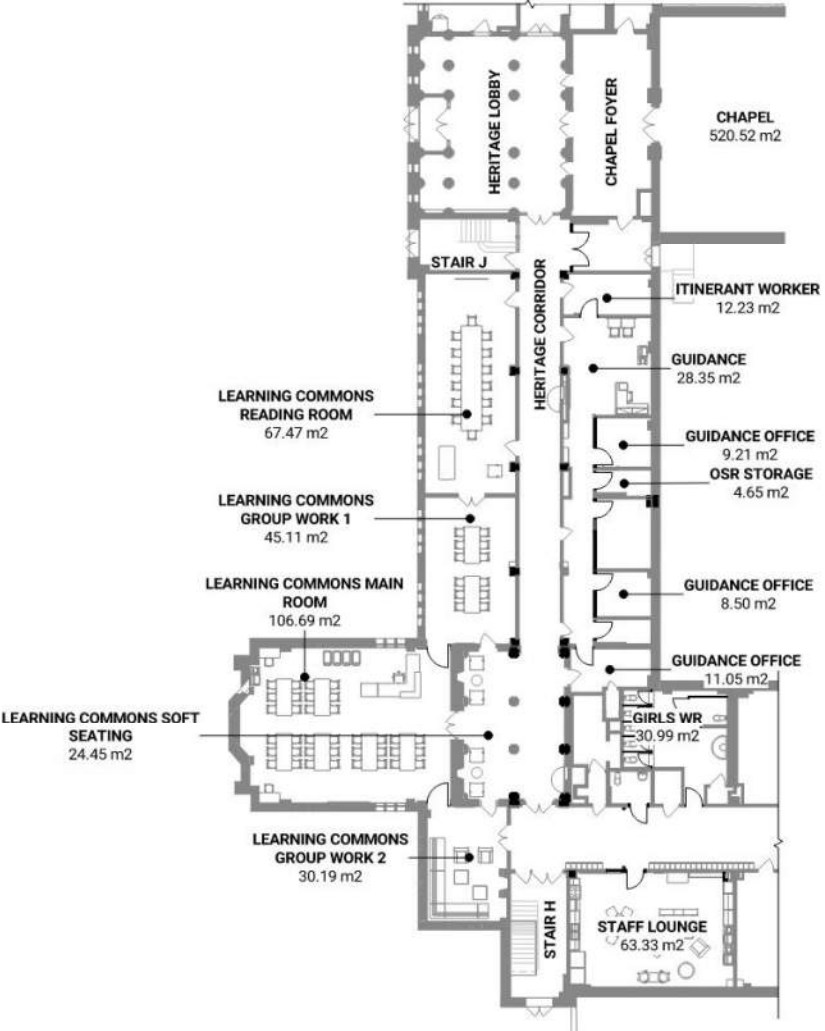
- INSTRUCTIONAL SPACE - ATHLETIC
- INSTRUCTIONAL SPACE - CLASSROOMS
- INSTRUCTIONAL SPACE - OTHER
- OPERATIONAL SPACE - GENERAL
- OPERATIONAL SPACE - OFFICE
- SCHOOL CIRCULATION

# Level 2 Plan: Addition

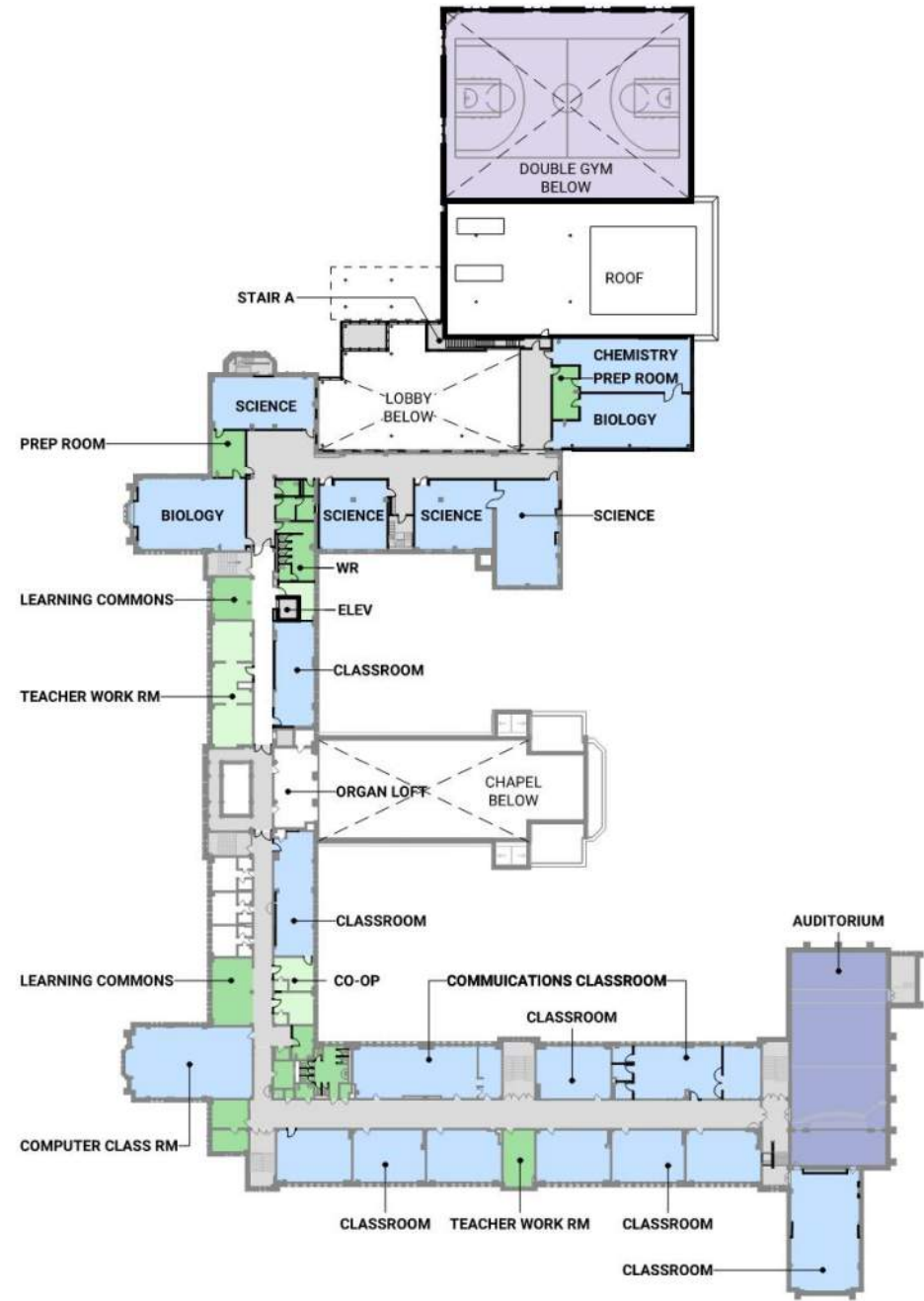




# Level 2 Plan: Learning Commons and Guidance



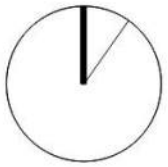
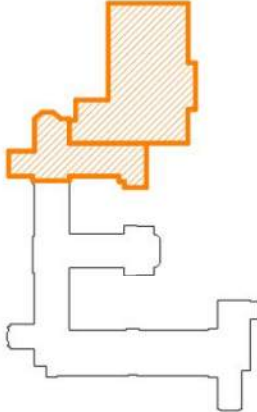
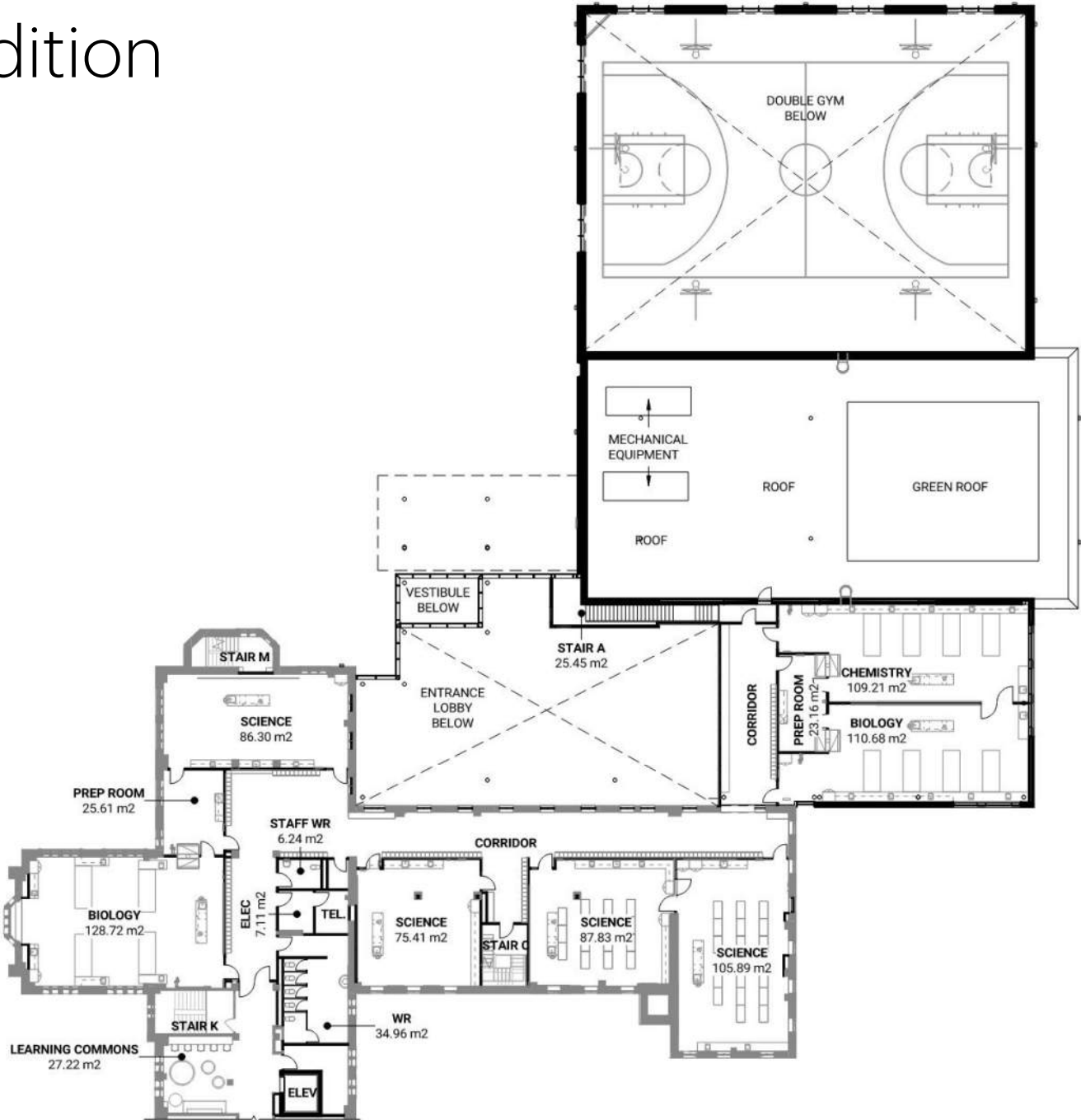
# Level 3 Plan



## SPACE FUNCTION TYPE

- INSTRUCTIONAL SPACE - ATHLETIC
- INSTRUCTIONAL SPACE - CLASSROOMS
- INSTRUCTIONAL SPACE - OTHER
- OPERATIONAL SPACE - GENERAL
- OPERATIONAL SPACE - OFFICE
- SCHOOL CIRCULATION

# Level 3 Plan: Addition

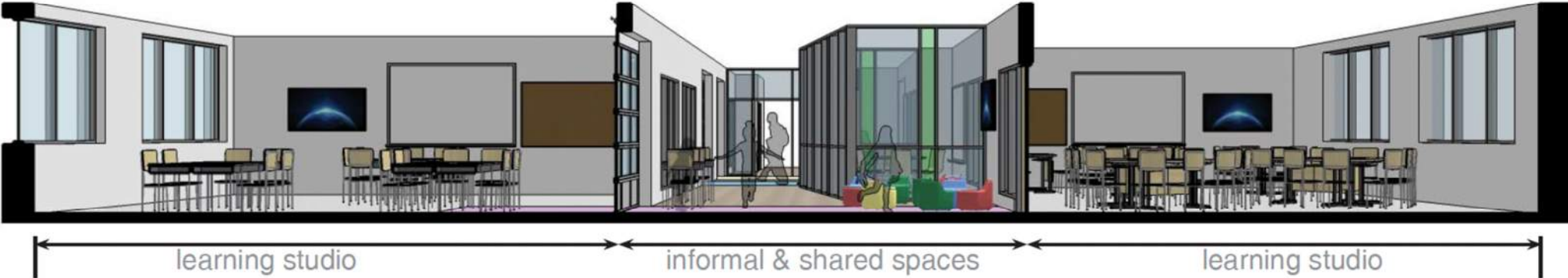




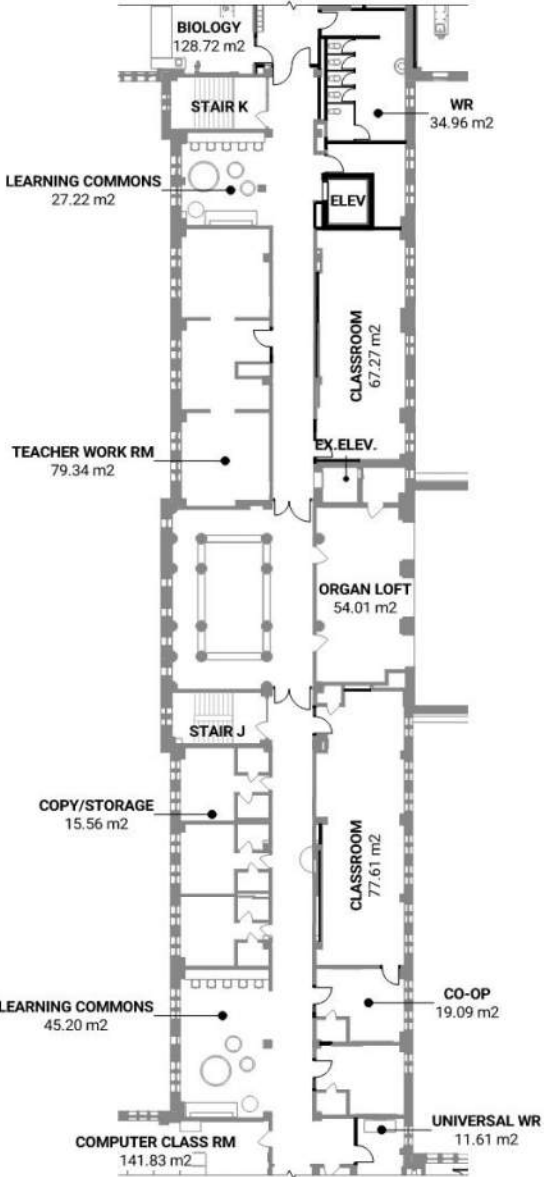
# 21<sup>st</sup> Century Learning

## Activate Corridor Space

learning community

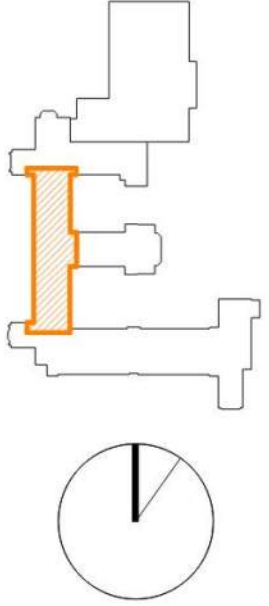


# Level 3 Plan: convent

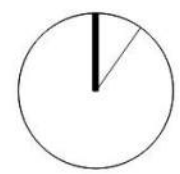
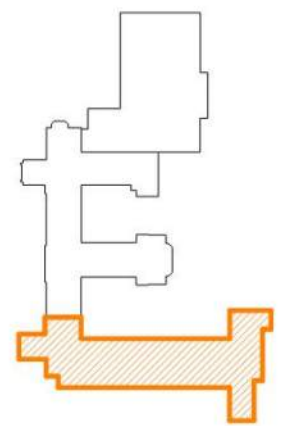
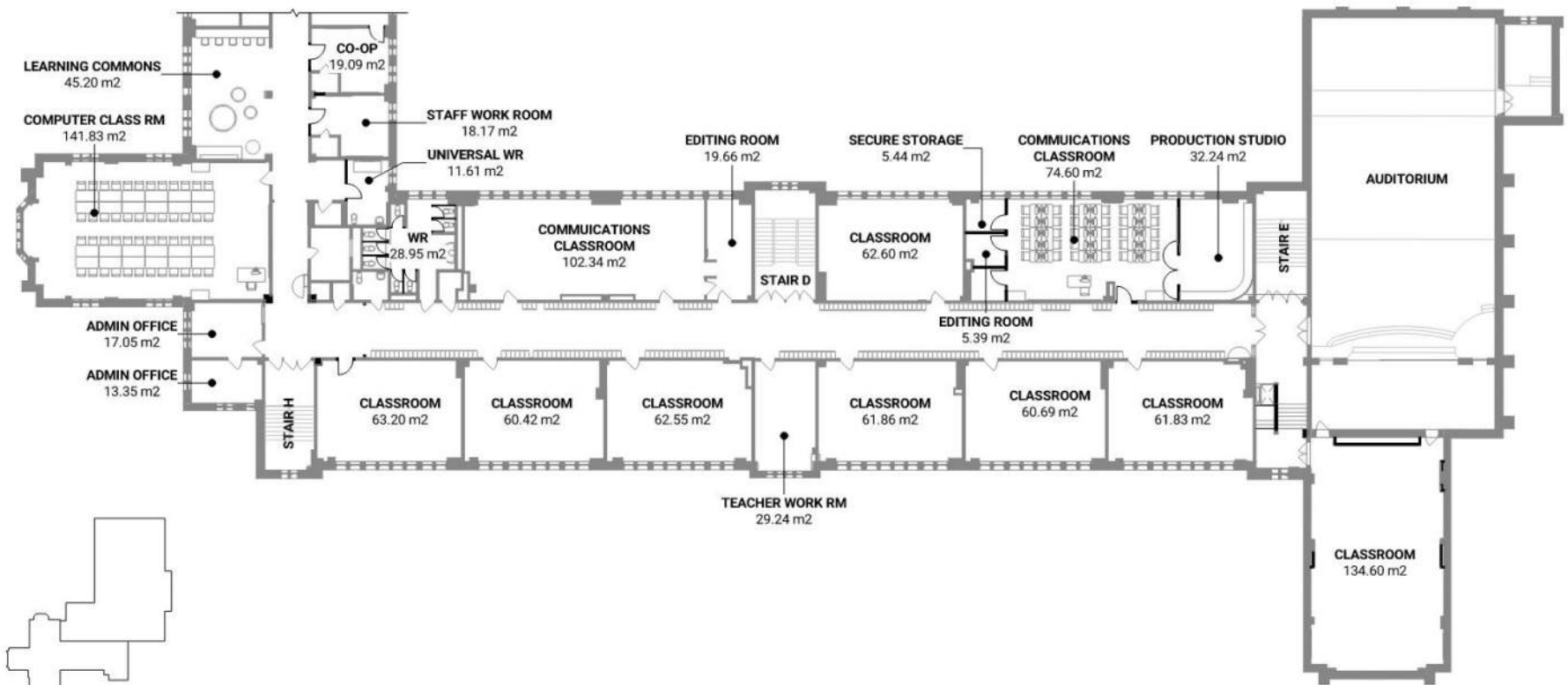


LEVEL 3 PLAN

1:300



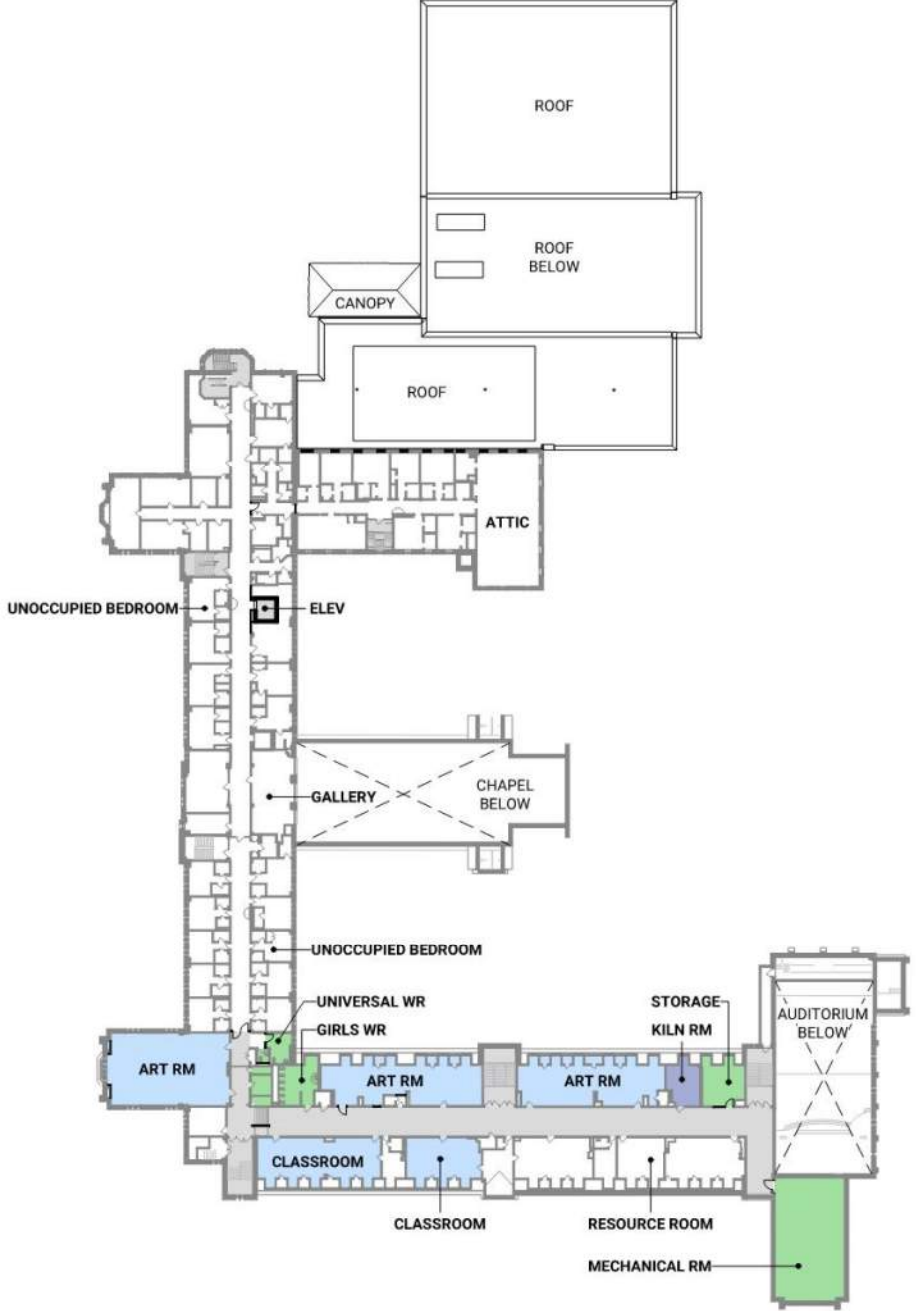
# Level 3 Plan: south school wing



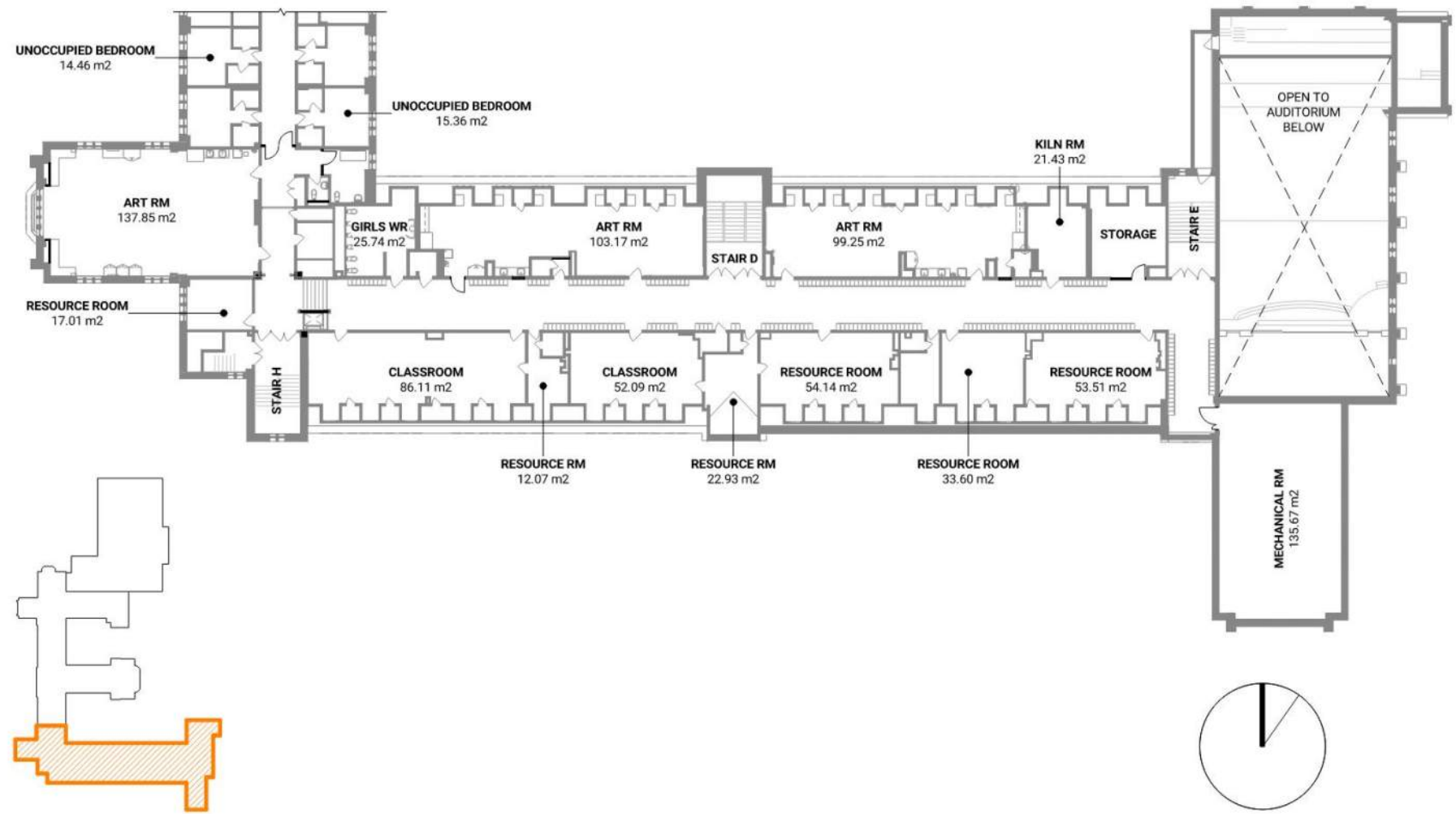


# Level 4 Plan

- SPACE FUNCTION TYPE**
- INSTRUCTIONAL SPACE - CLASSROOMS
  - INSTRUCTIONAL SPACE - OTHER
  - OPERATIONAL SPACE - GENERAL
  - SCHOOL CIRCULATION

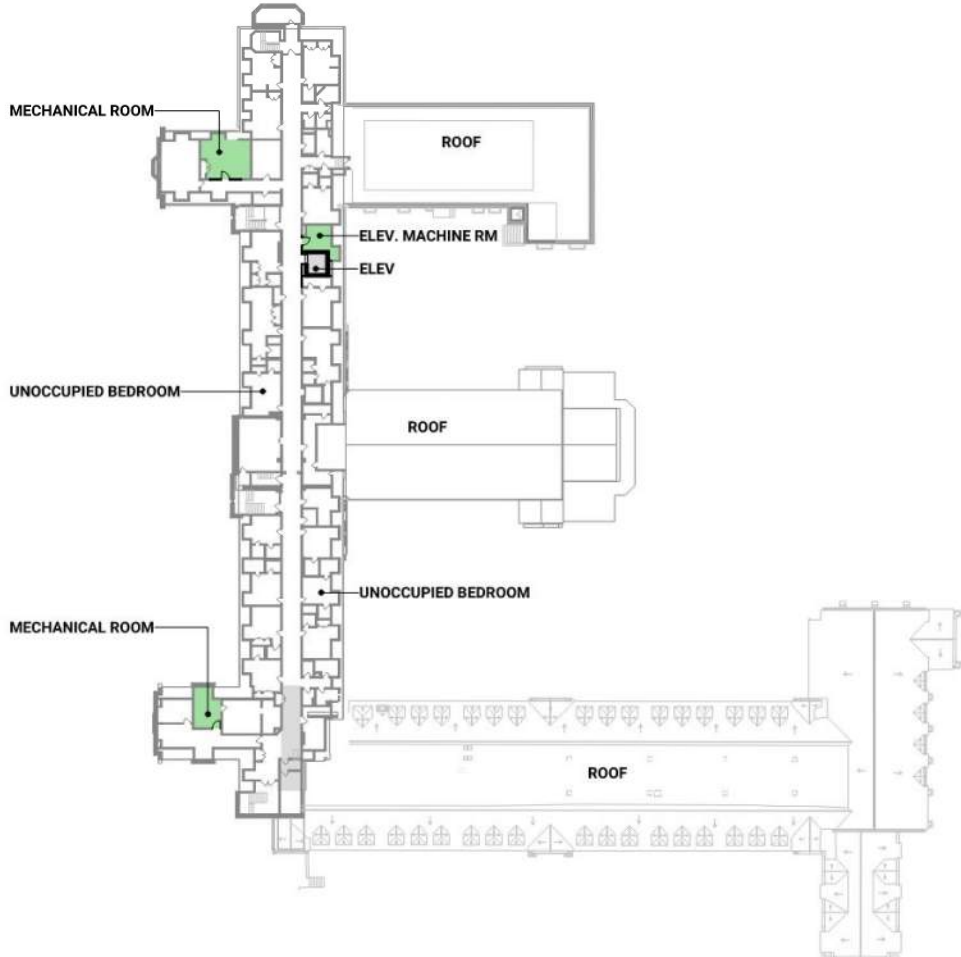


# Level 4 Plan: south school wing



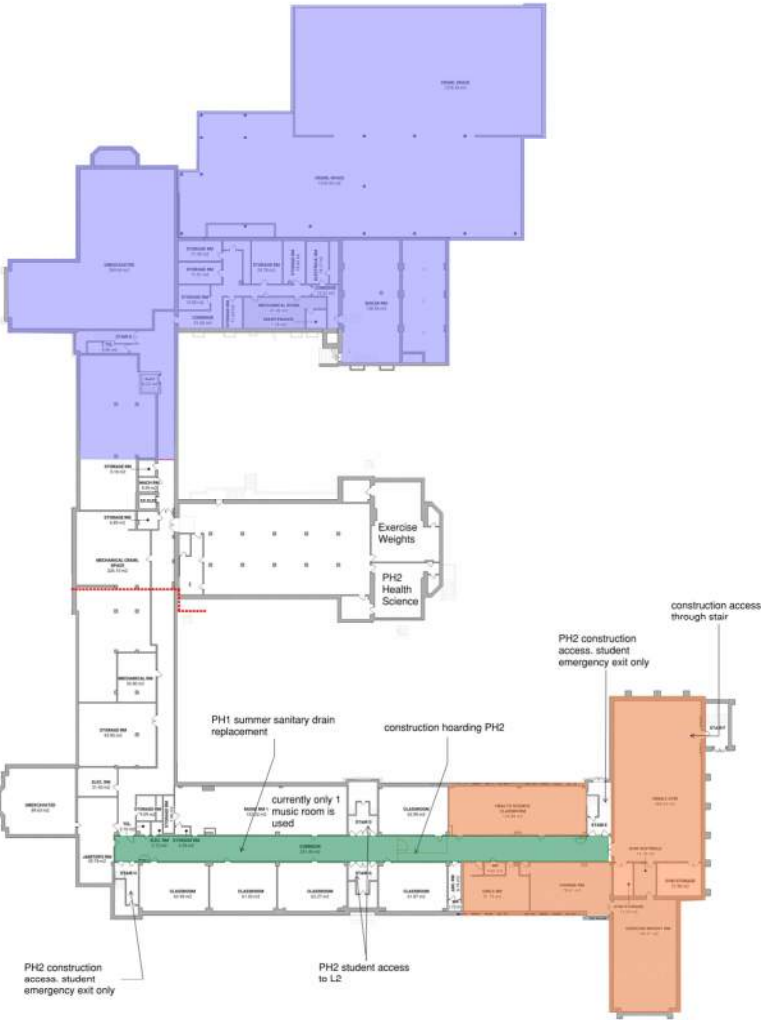
# Level 5 Plan

**SPACE FUNCTION TYPE**  
OPERATIONAL SPACE - GENERAL  
SCHOOL CIRCULATION

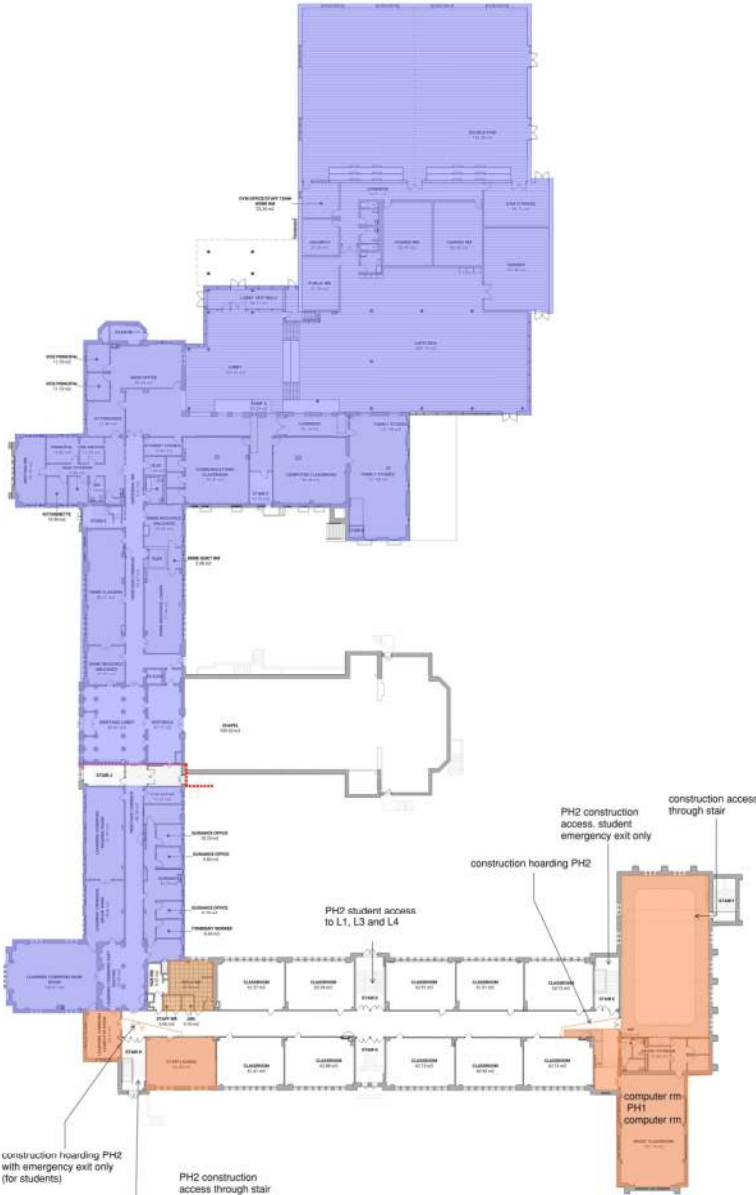


# Phasing Levels 1 and 2

- PHASING LEGEND**
- PH1 nov 2024 to feb 28 2026 - 1Y 4mo
  - PH1S summer july-aug 2025 2 mo
  - PH2 march 2026-aug 2026 6 mo
  - PH2S summer july-aug 2026 2 mo



PHASING PLAN - LEVEL 1

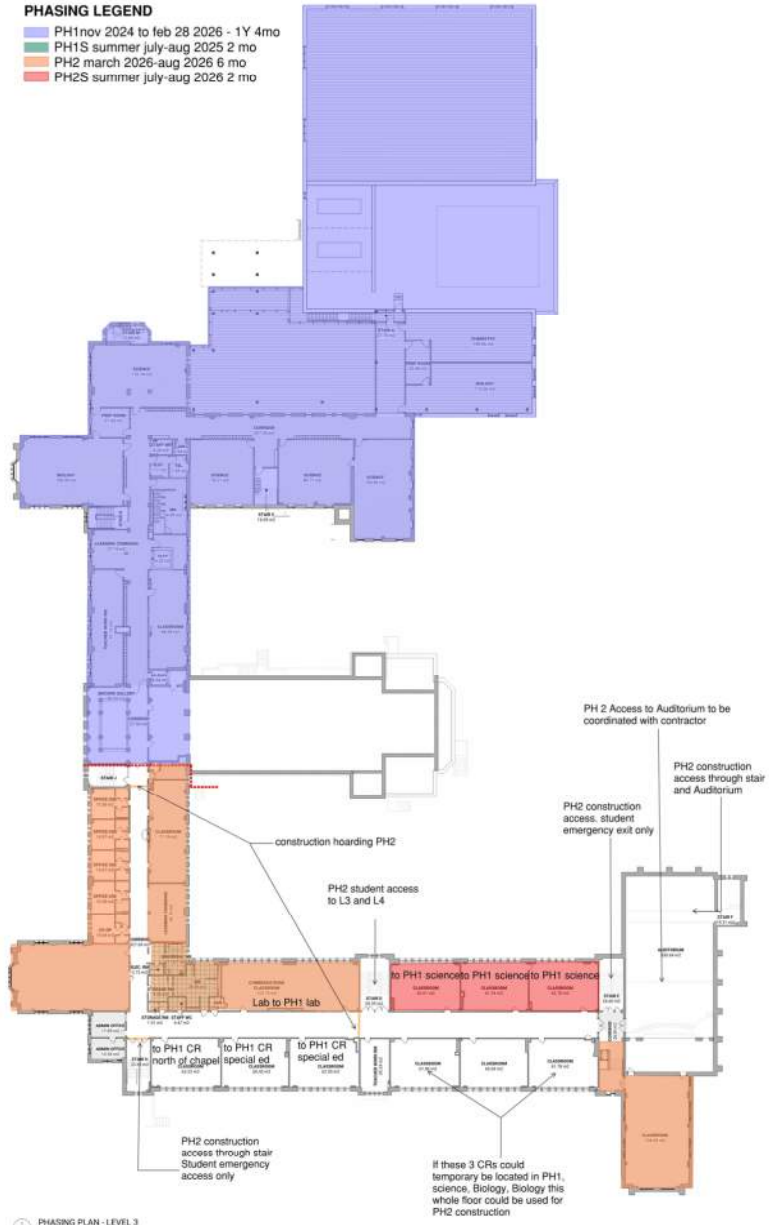


PHASING PLAN - LEVEL 2

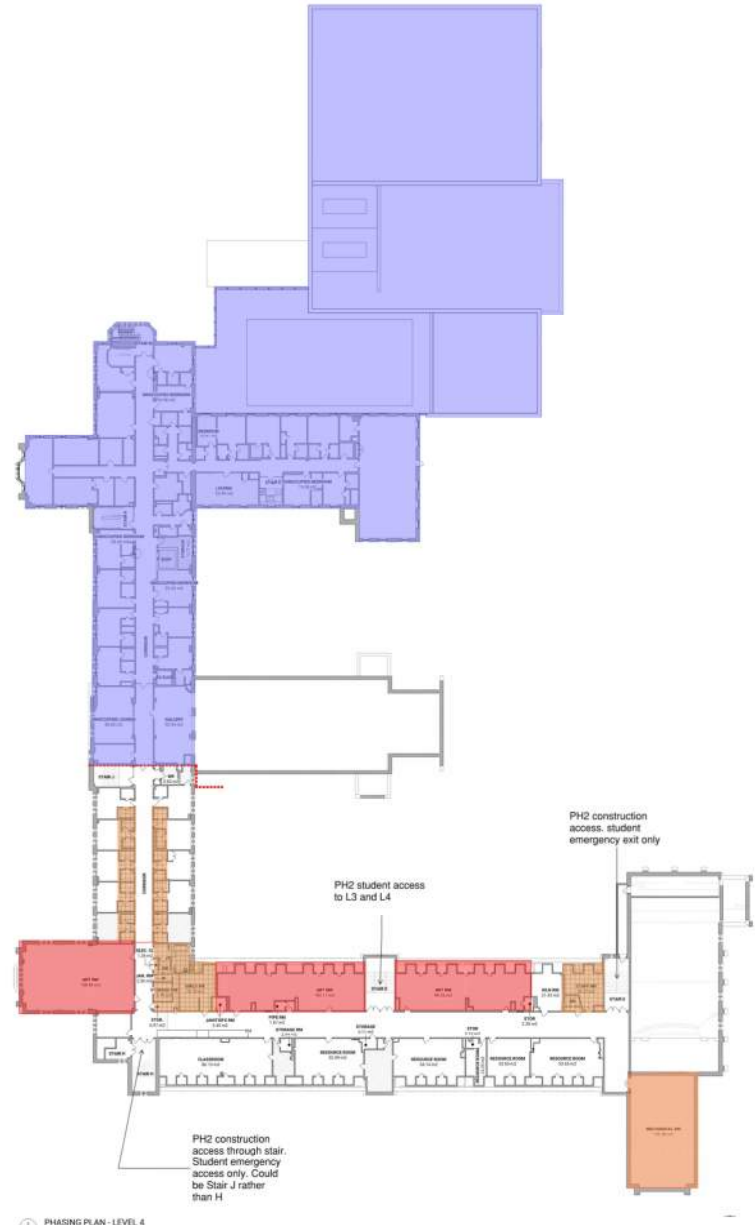


# Phasing Levels 3, 4 and 5

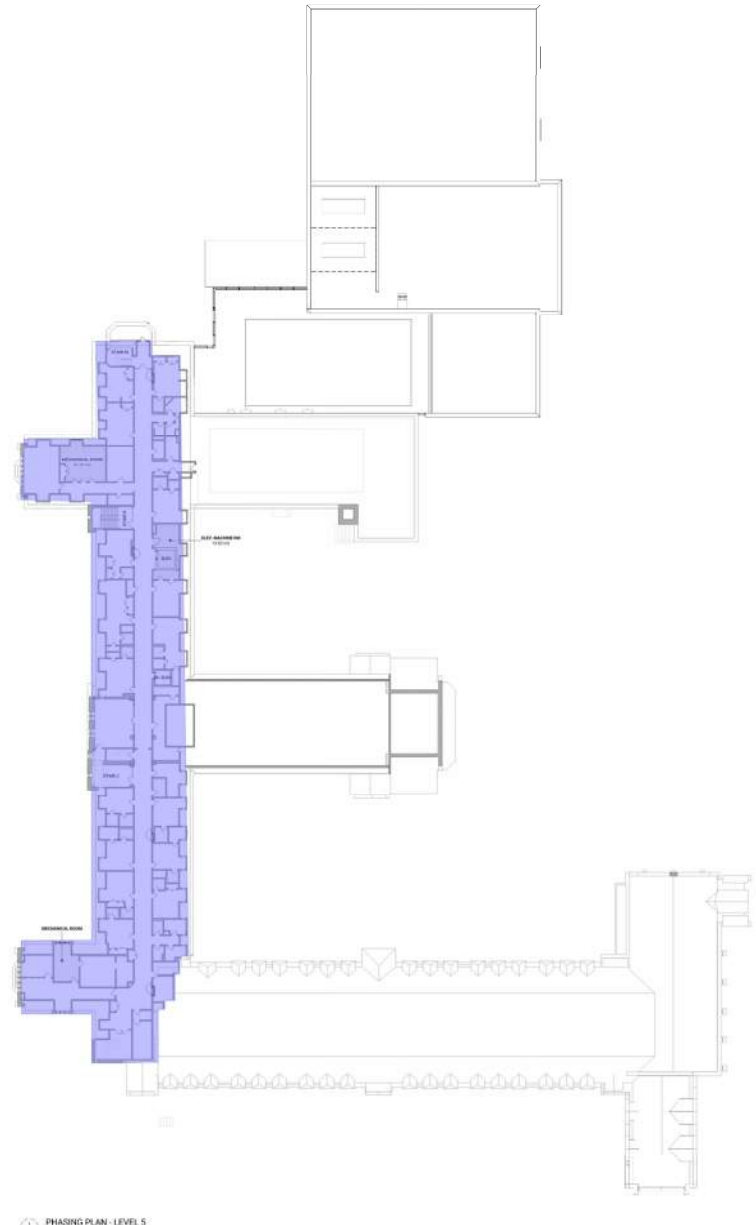
- PHASING LEGEND**
- PH1 nov 2024 to feb 28 2026 - 1Y 4mo
  - PH1S summer july-aug 2025 2 mo
  - PH2 march 2026-aug 2026 6 mo
  - PH2S summer july-aug 2026 2 mo



PHASING PLAN - LEVEL 3



PHASING PLAN - LEVEL 4



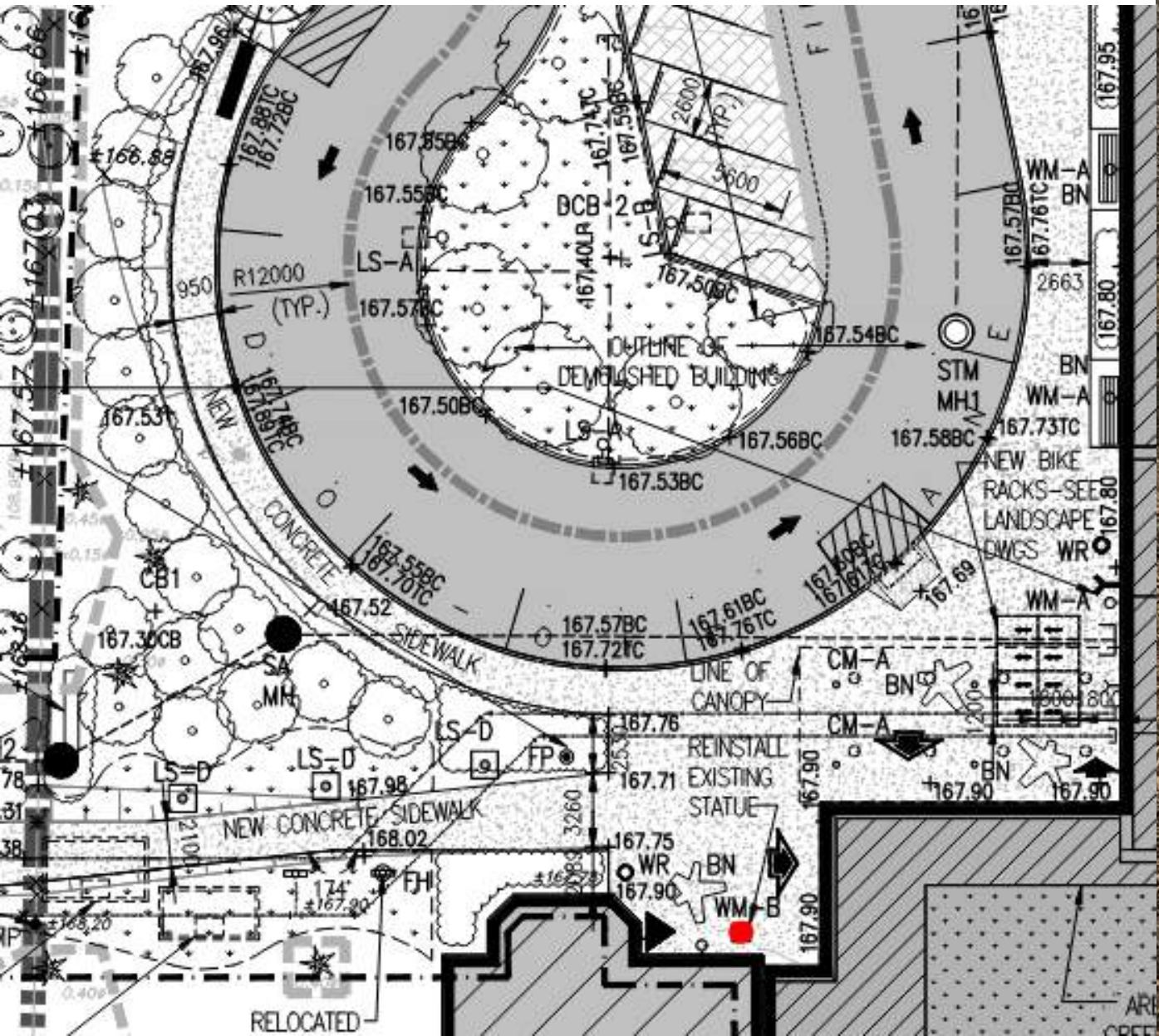
PHASING PLAN - LEVEL 5

# Site Plan





# Catholicity





# Entrance View from Mason Blvd





# Entrance View from Drop off Loop





# Perspective view of Cafeteria





# Cafeteria interior





View toward Lobby





# View of Lobby from Heritage Building



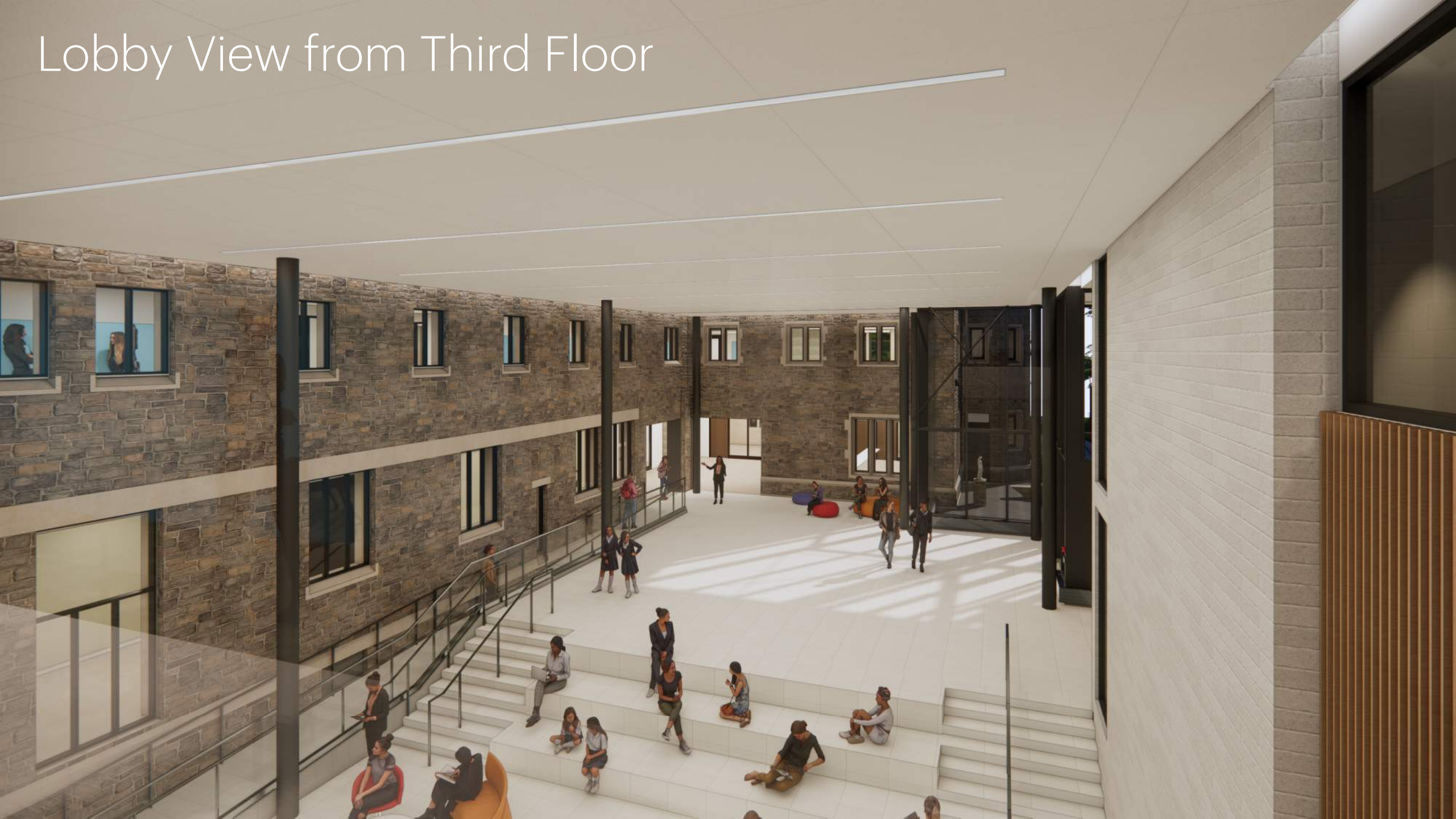


# Perspective View at Entrance





# Lobby View from Third Floor



3D view





Thank you