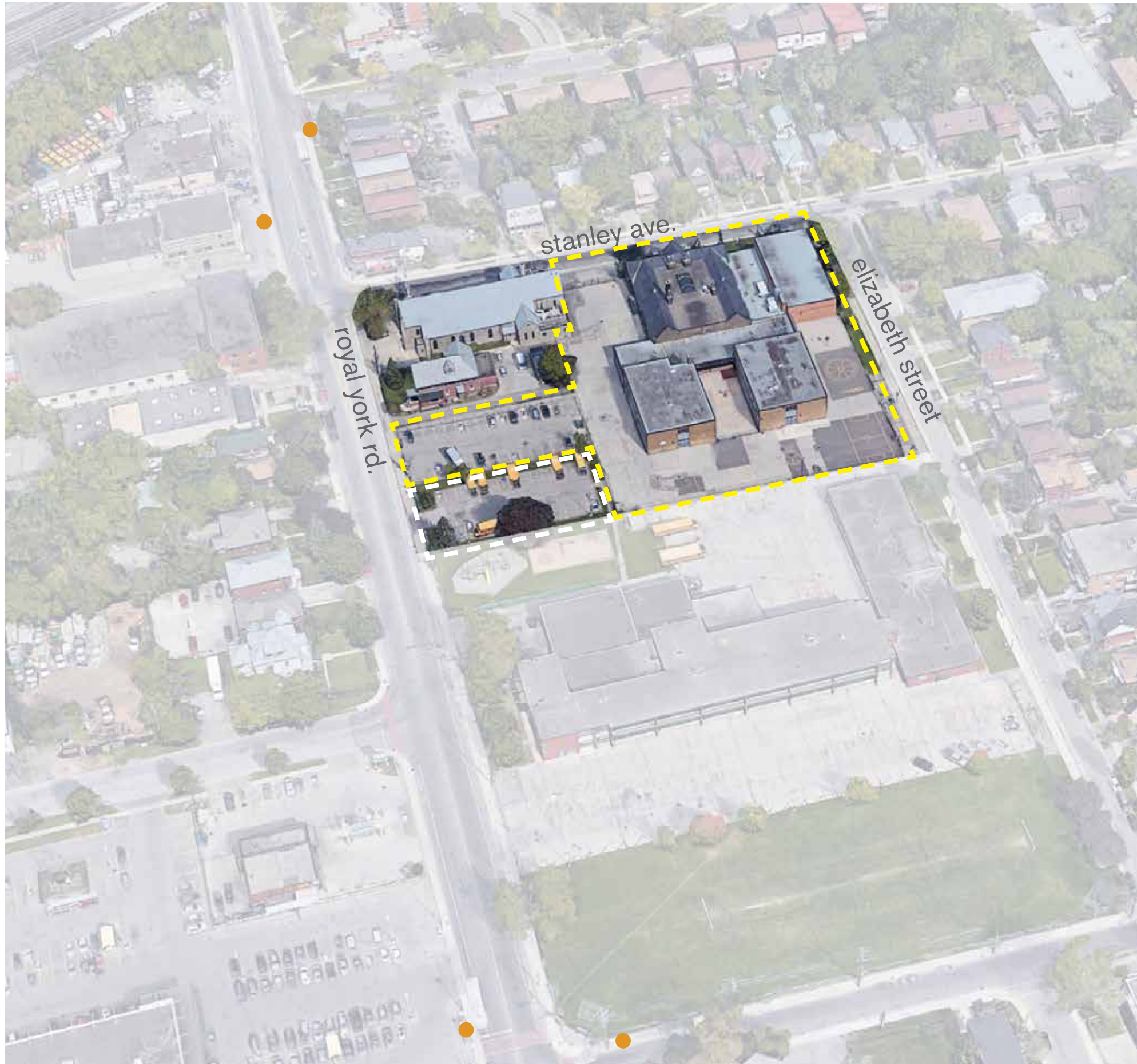


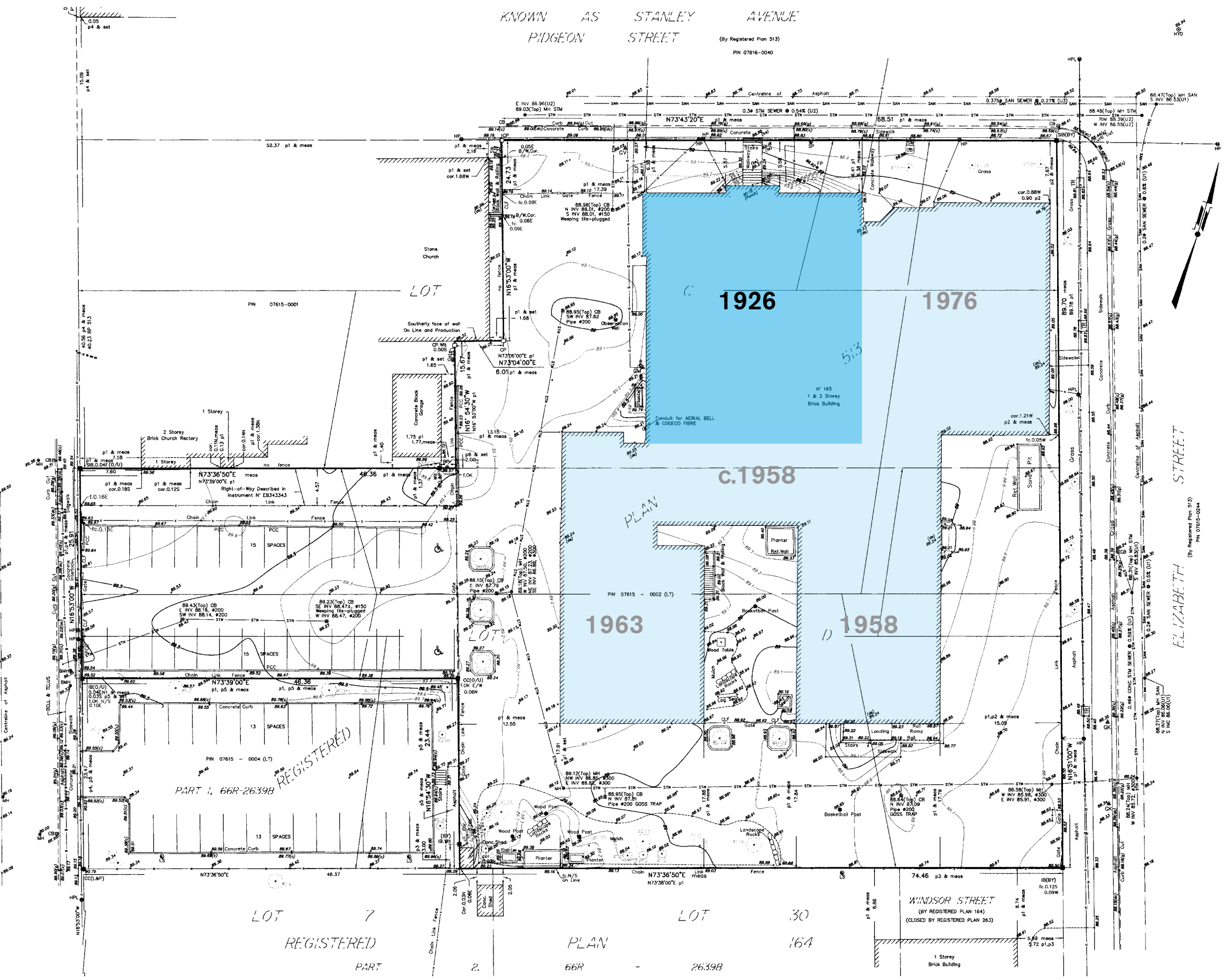
St. Leo - St. Louis
Catholic School
TOWN HALL MEETING
2021.06.02

KOHN SHNIER **architects**



KNOWN AS STANLEY AVENUE
PIGEON STREET
(By Registered Plan 513)
PIN 07616-0040

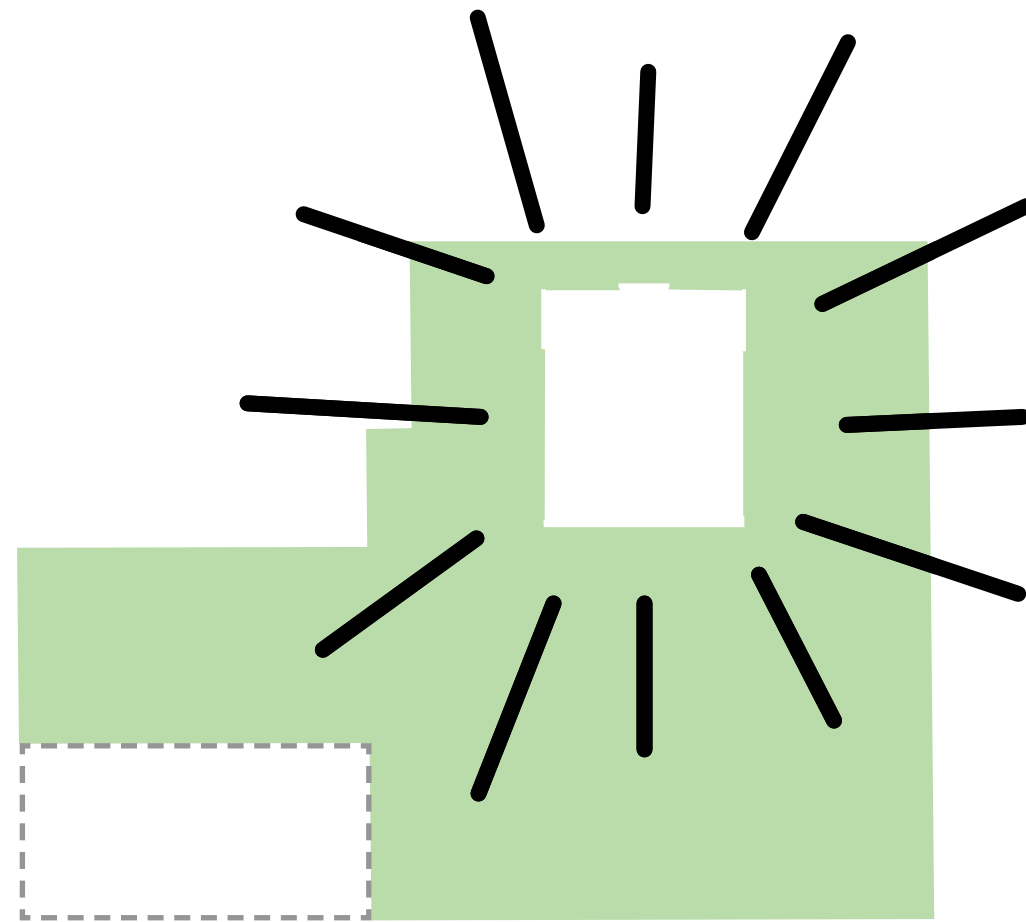
ROYAL YORK ROAD
ORIGINAL ROAD ALLOWANCE BETWEEN SECOND MERIDIAN CONVESSION AND LOTS B AND C.
RANGE 10 ON LAKE ONTARIO AND Humber RIVER
PIN 07615-0045



LOT 7
REGISTERED
PART 2.

LOT 30
REGISTERED
PART 2.

WINDSOR STREET
(BY REGISTERED PLAN 164)
(CLOSED BY REGISTERED PLAN 263)



HERITAGE BUILDING

What use? How much can we use?

How to make it accessible?

“I love teaching in these classrooms”

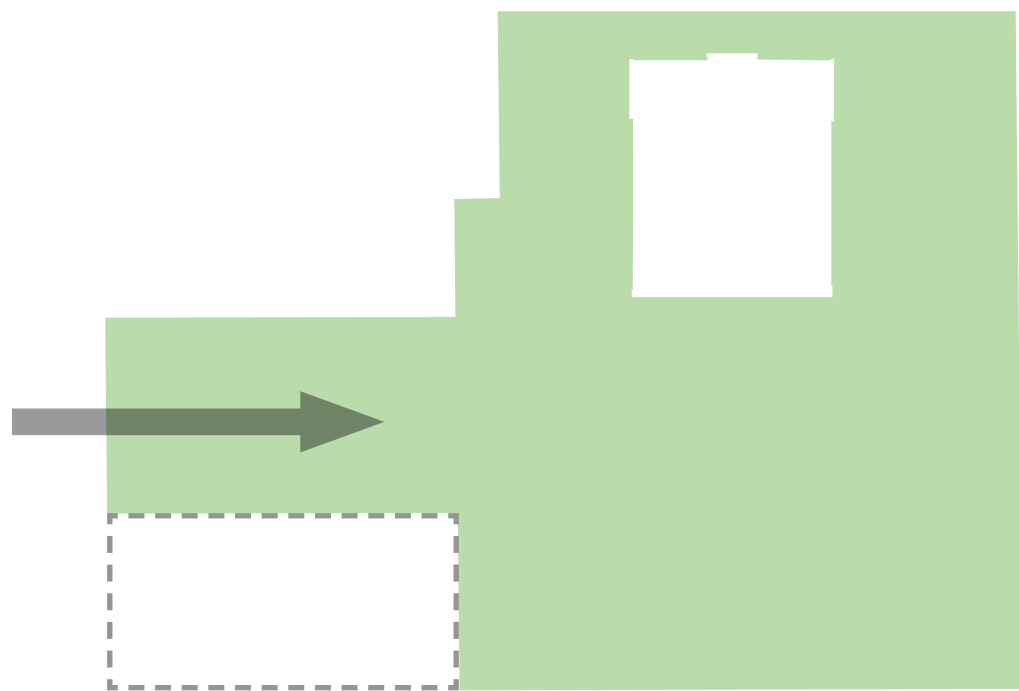
St. Leo teacher at first public meeting



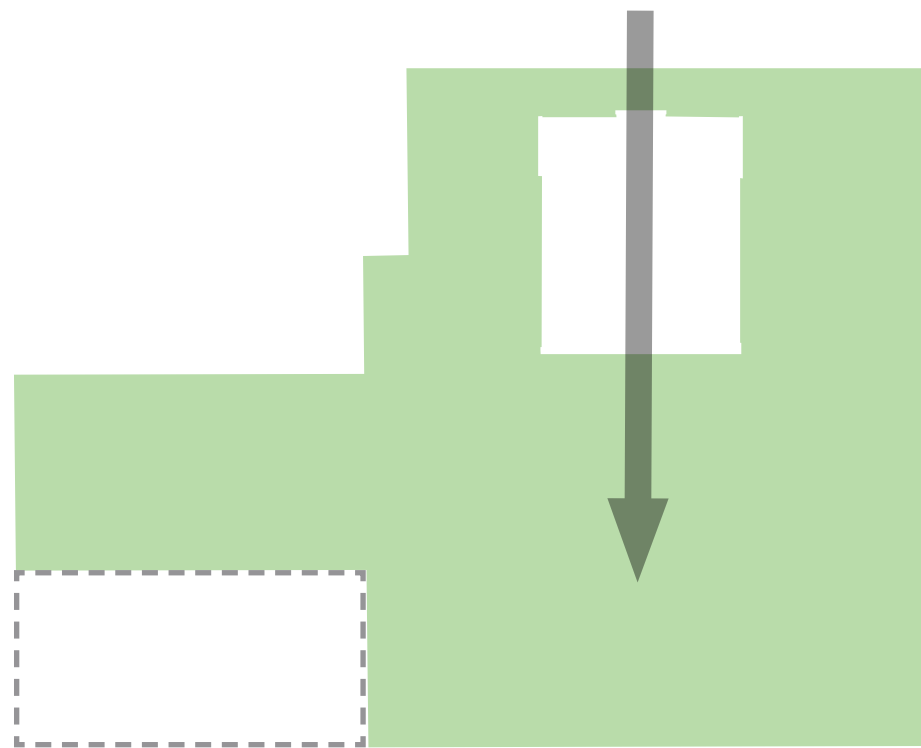
ST. LEO - ST. LOUIS CATHOLIC SCHOOL sl1802

21.06.02

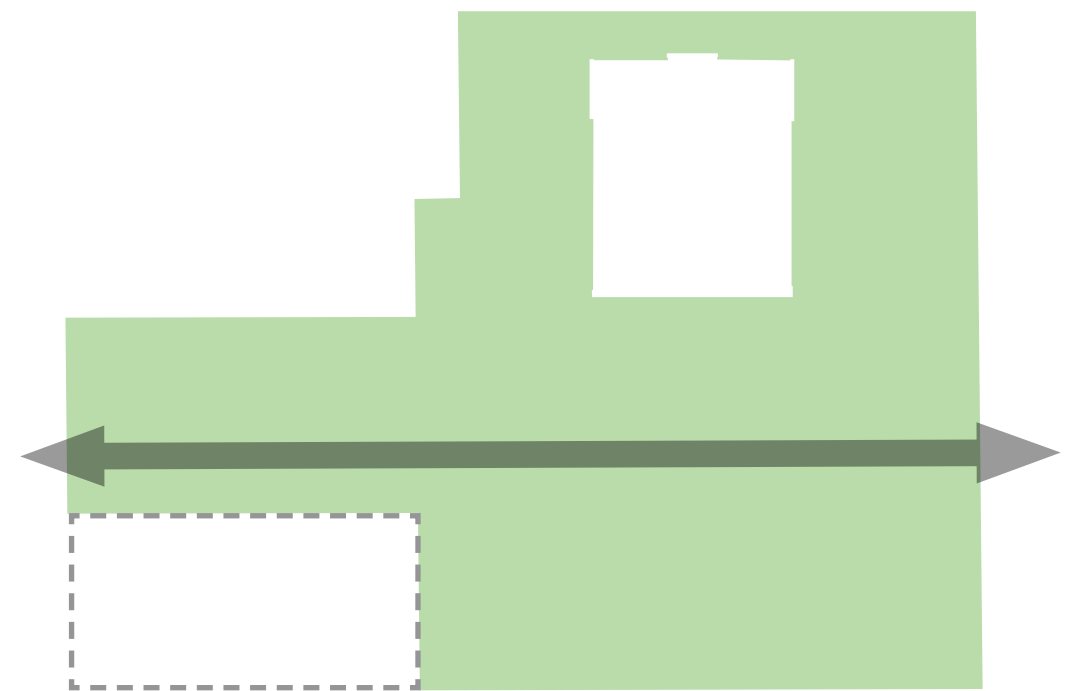
KOHN SHNIER architects



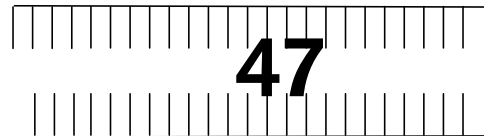
PRESENCE ON ROYAL YORK ROAD



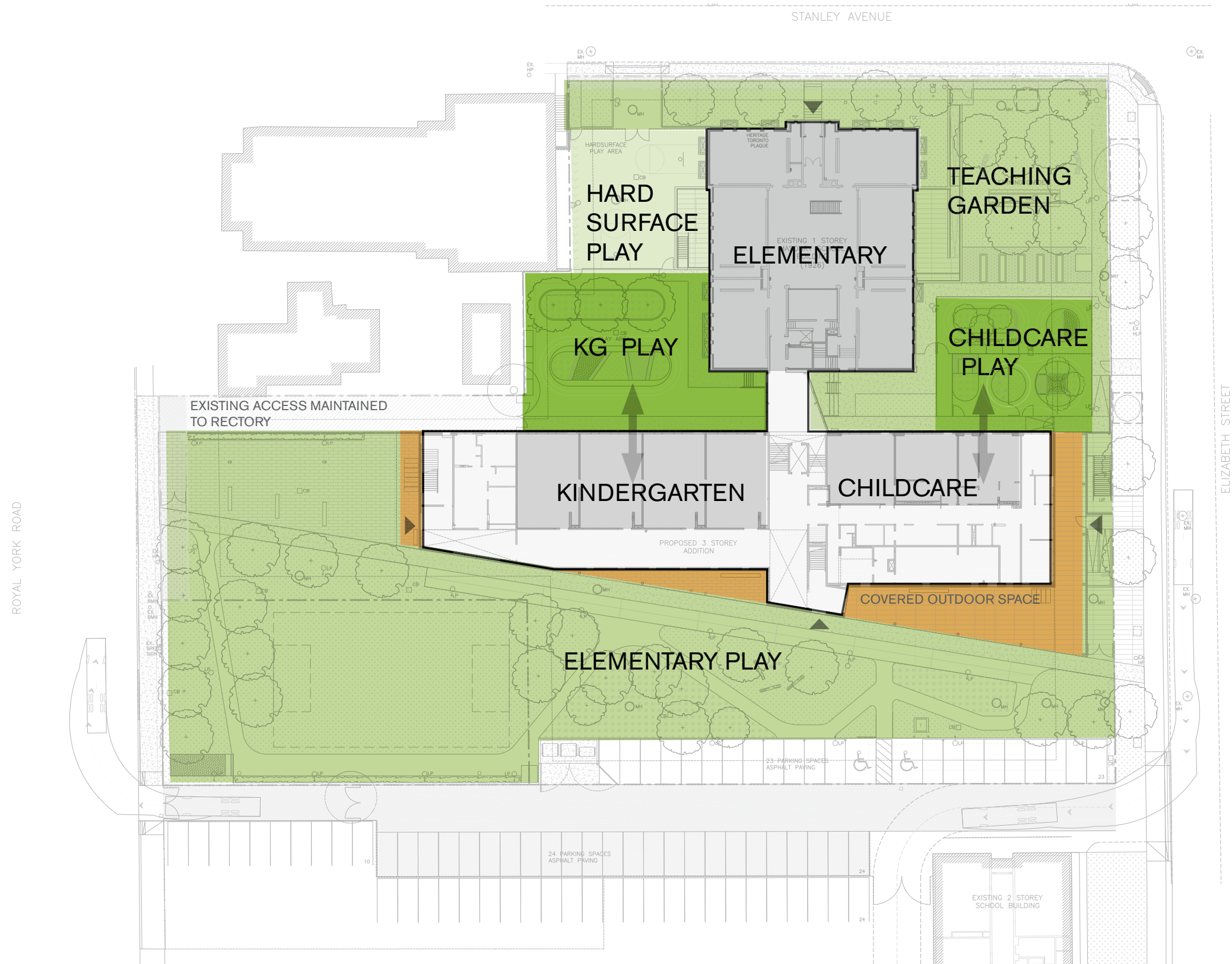
**CONNECTION THROUGH
HERITAGE BUILDING**



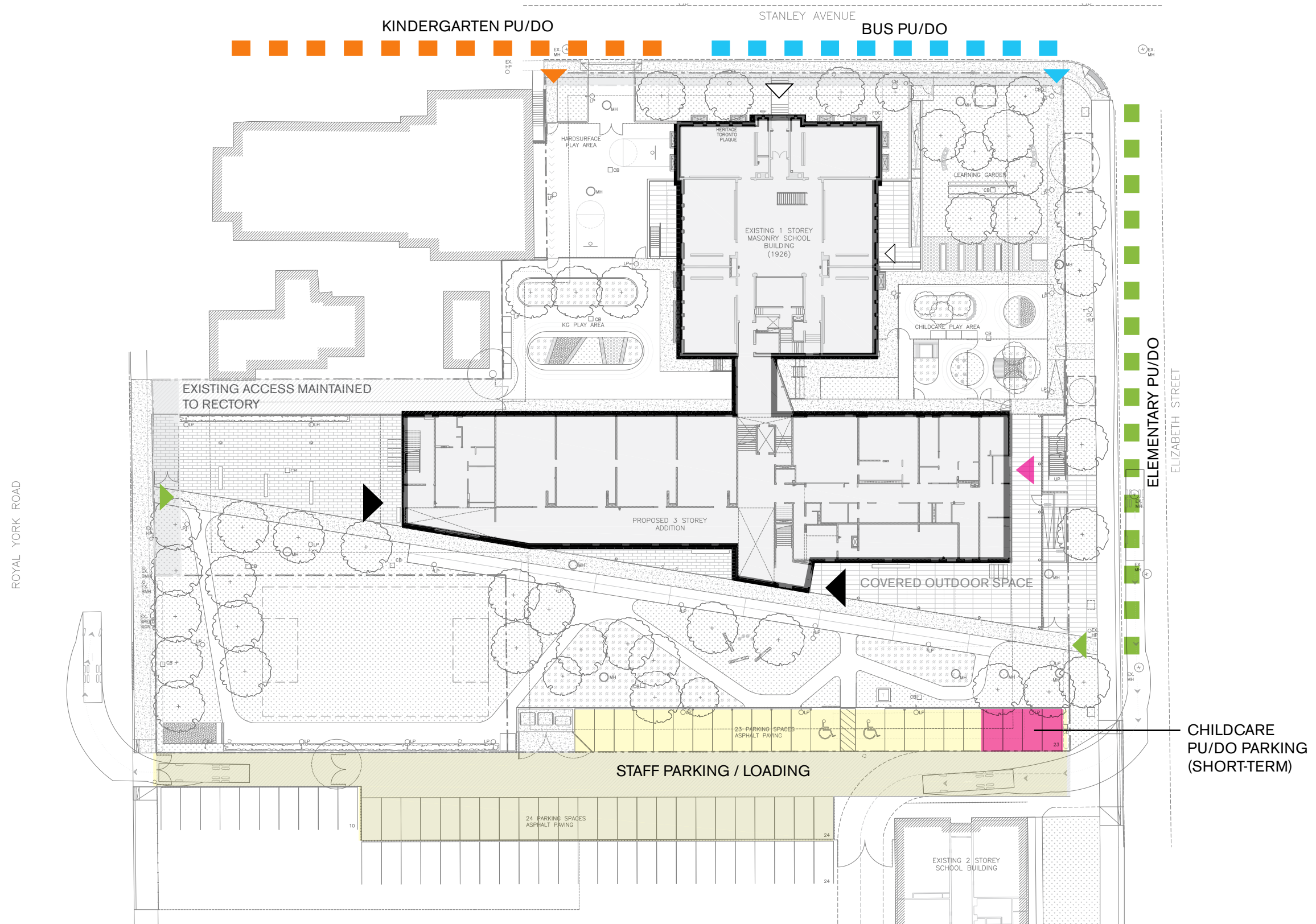
PERMEANCE THROUGH SITE



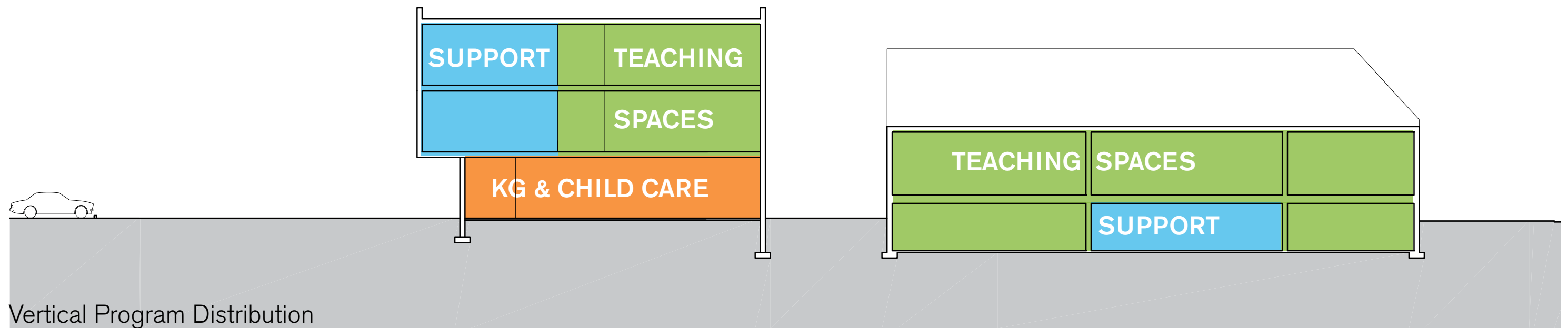
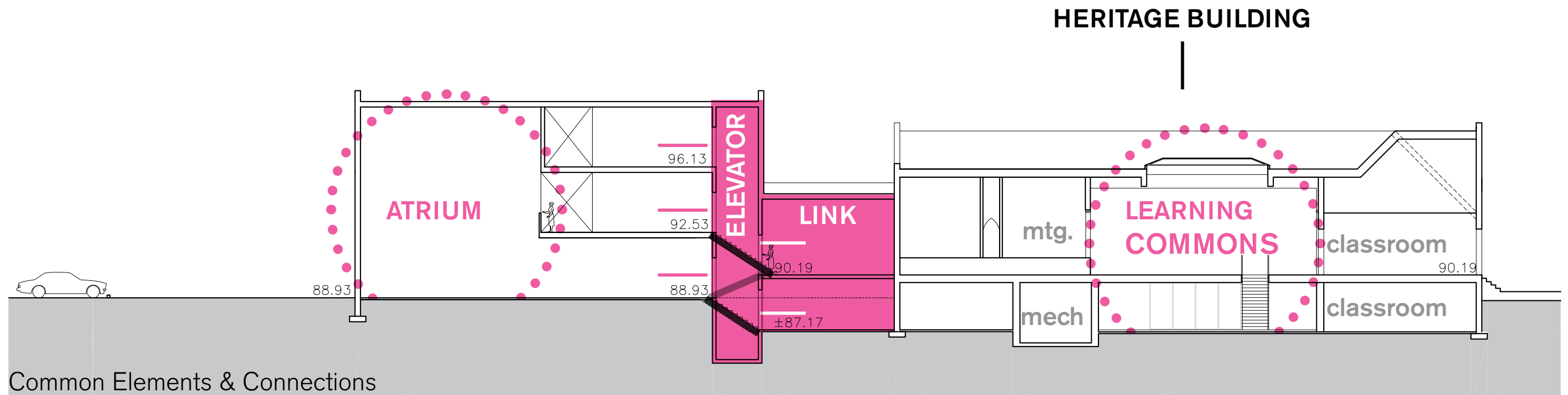
PARK OR PLAY?

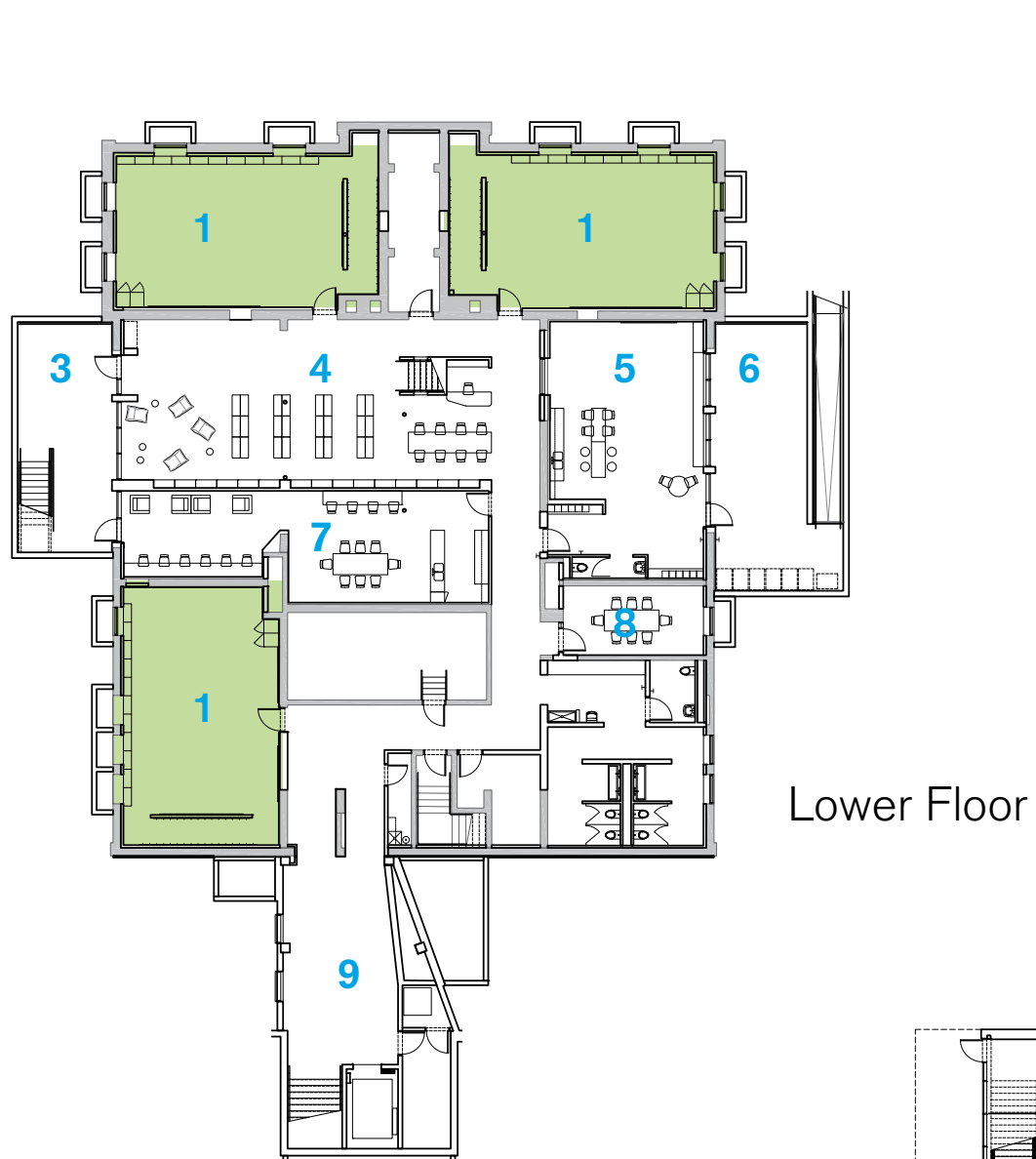


PLAY SPACE & PROGRAM

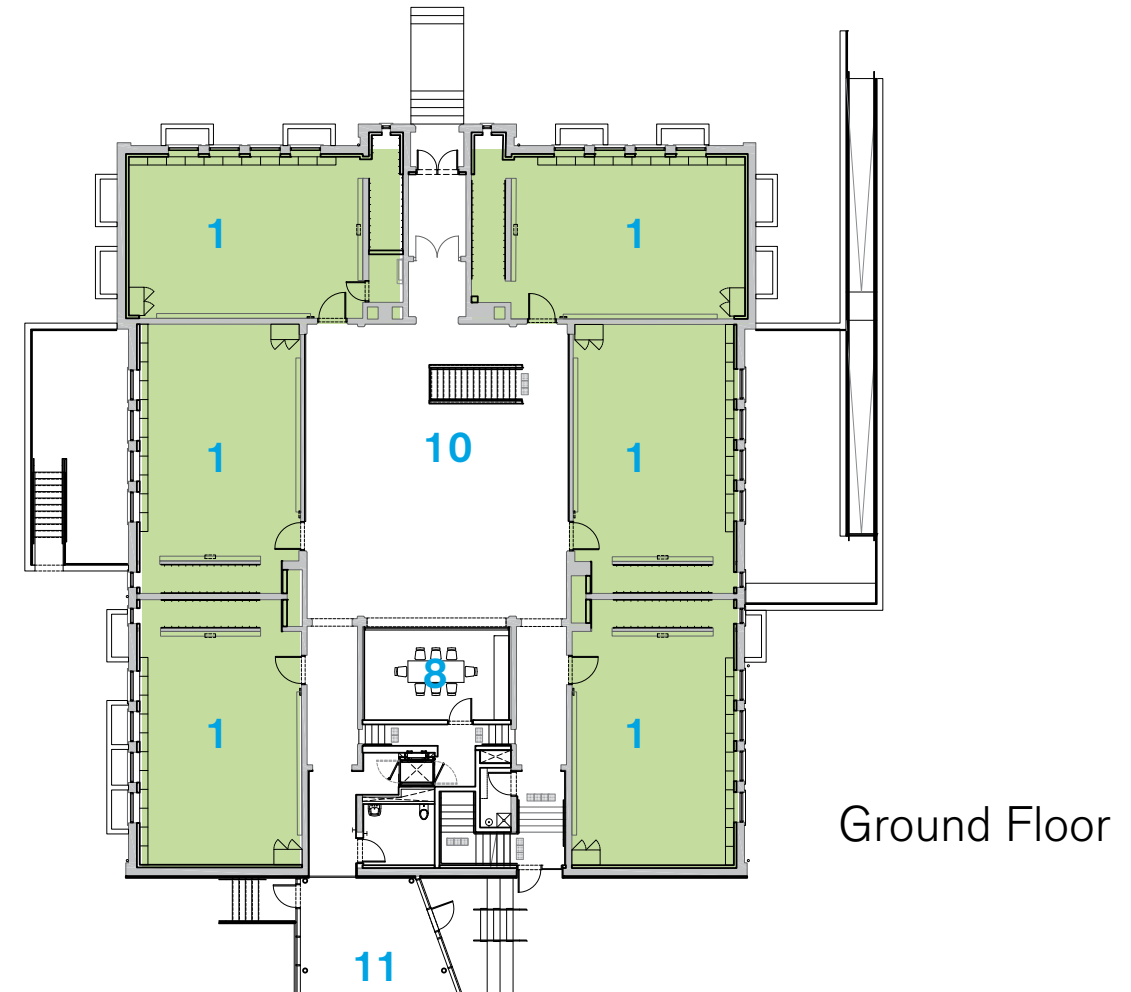


PEOPLE & CARS (PICKUP/DROPOFF/PARKING/LOADING)

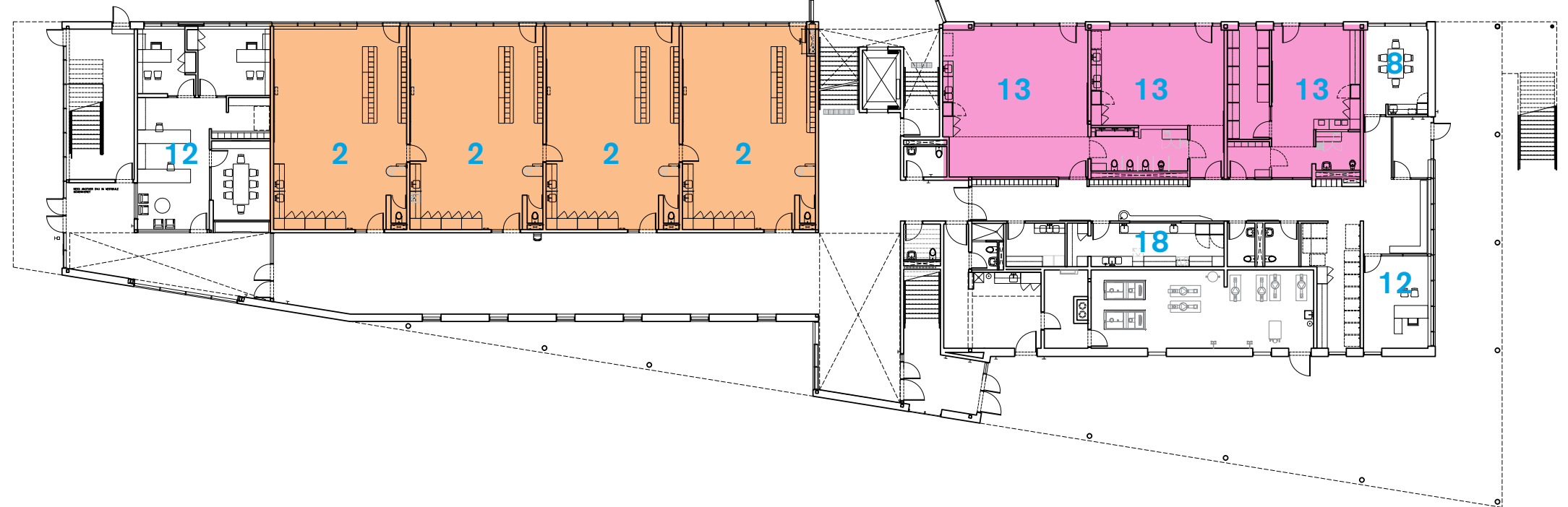


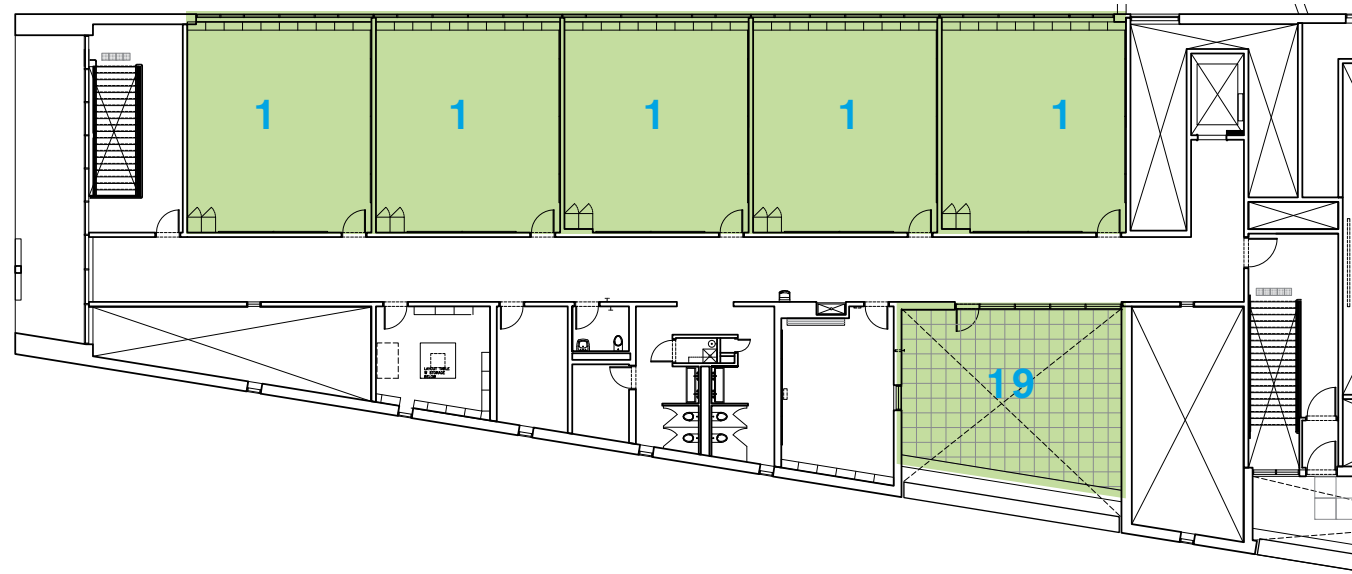


Lower Floor

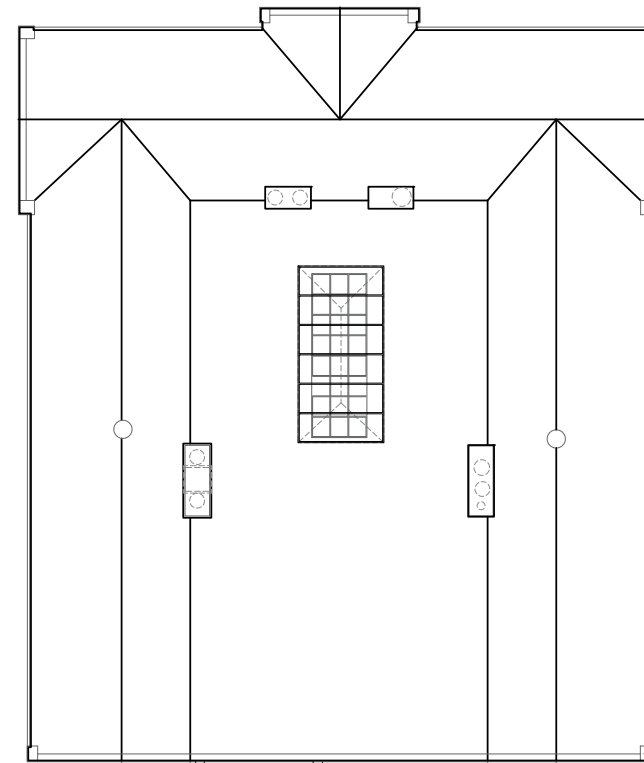


Ground Floor





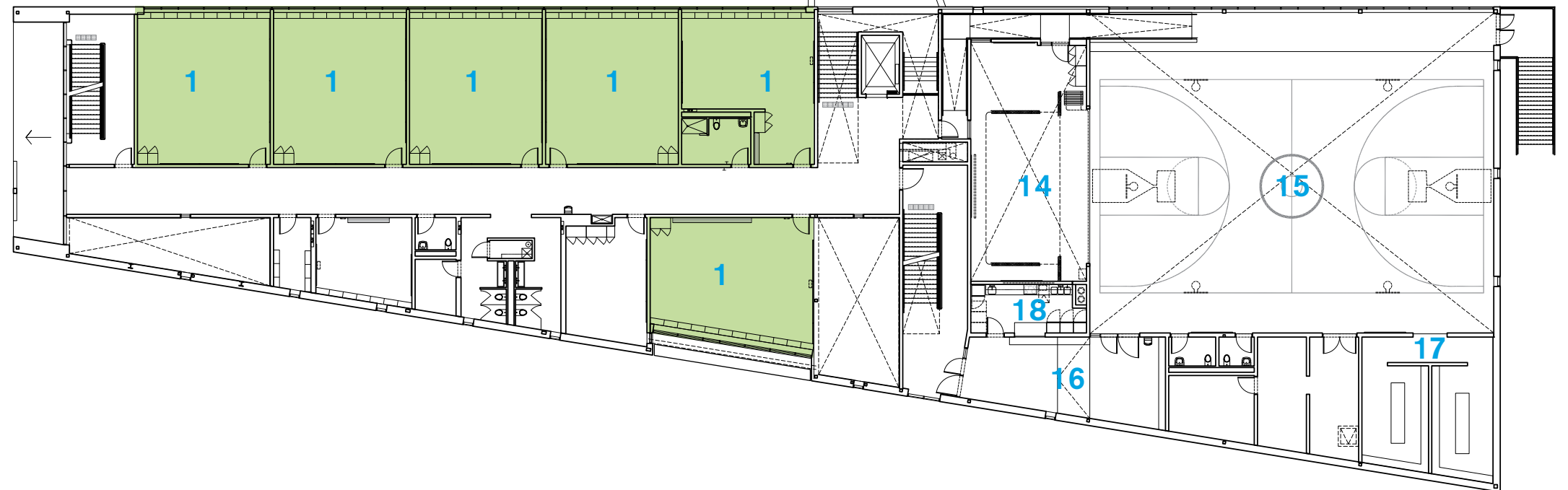
3rd Floor (partial)



2nd Floor

LEGEND

- 1 classroom
- 2 kindergarten classroom
- 3 west sunken court
- 4 lower learning commons
- 5 Early ON program
- 6 east sunken court
- 7 staff room
- 8 meeting
- 9 lower link
- 10 upper learning commons
- 11 upper link
- 12 administration
- 13 childcare classrooms
- 14 multi-program room / stage
- 15 gymnasium
- 16 gym lobby
- 17 change rooms
- 18 servery
- 19 outdoor classroom



TEXTURED STUCCO ABOVE
GLAZED BLOCK BASE



MASONRY AT EXIST. SCHOOL

PROPOSED FOR NEW ADDITION

STONE AT ADJACENT CHURCH

MASONRY WITHIN SCHOOL

MATERIAL PALETTE MINERAL / TEXTURES

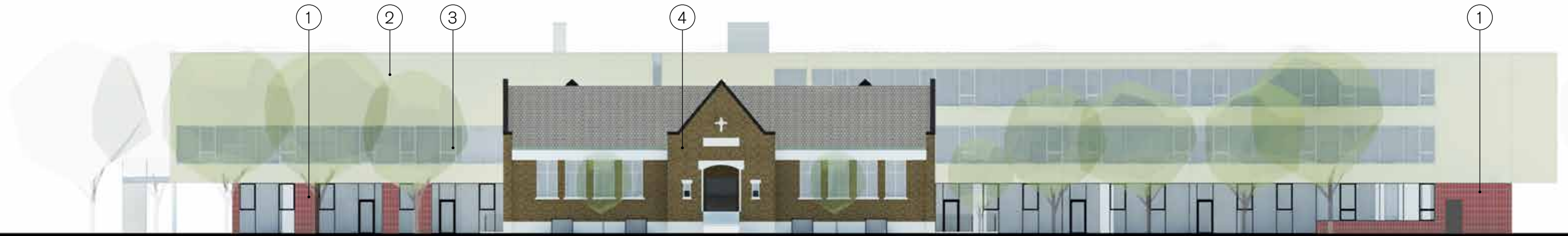


CAMPUS CONTEXT

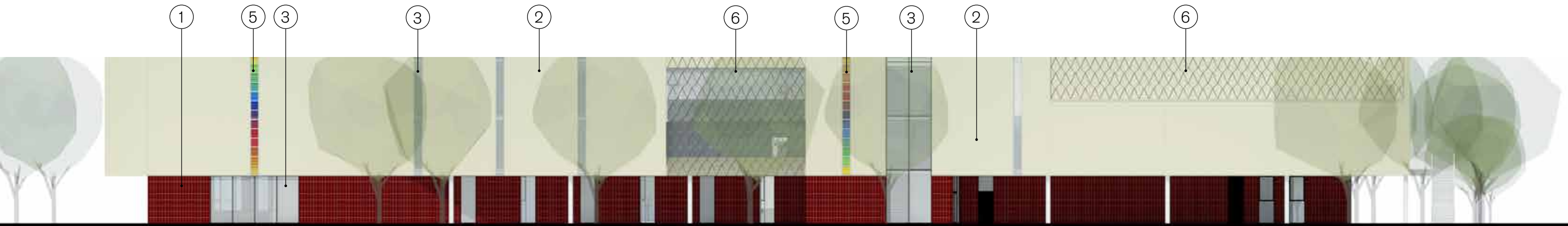








NORTH ELEVATION FROM STANLEY AVENUE



SOUTH ELEVATION

Material Legend

- ① glazed masonry veneer (colour to be determined with Urban Design staff on site)
- ② 'Terraneo' textured stucco
- ③ glazing with aluminum framing
- ④ existing brick at heritage school
- ⑤ coloured glazing
- ⑥ aluminum screen



WEST ELEVATION



EAST ELEVATION

Material Legend

- | | |
|---|------------------------------------|
| ① glazed masonry veneer (colour to be determined with Urban Design staff on site) | ⑦ freestanding painted steel cross |
| ② 'Terraneo' textured stucco | ⑧ recessed stucco cross |
| ③ glazing with aluminum framing | ⑨ steel picket guard |
| ④ existing brick at heritage school | |
| ⑤ coloured glazing | |
| ⑥ aluminum screen | |

