

SITE PLAN APPROVAL -  
PERSPECTIVES & COLOUR ELEVATIONS  
**ST. LEO - ST. LOUIS CATHOLIC SCHOOL**  
271 ROYAL YORK ROAD

K O H N S H N I E R **architects**





## SITE CONTEXT





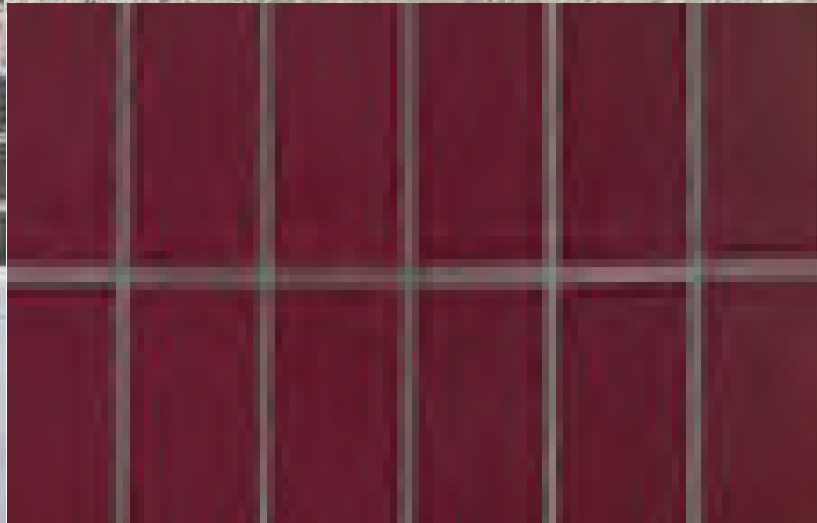
## CAMPUS CONTEXT



TEXTURED STUCCO ABOVE  
GLAZED BLOCK BASE  
(COLOUR TO BE CONFIRMED  
WITH URBAN DESIGN STAFF  
ON SITE)



MASONRY AT EXIST. SCHOOL



PROPOSED FOR NEW ADDITION



STONE AT ADJACENT CHURCH

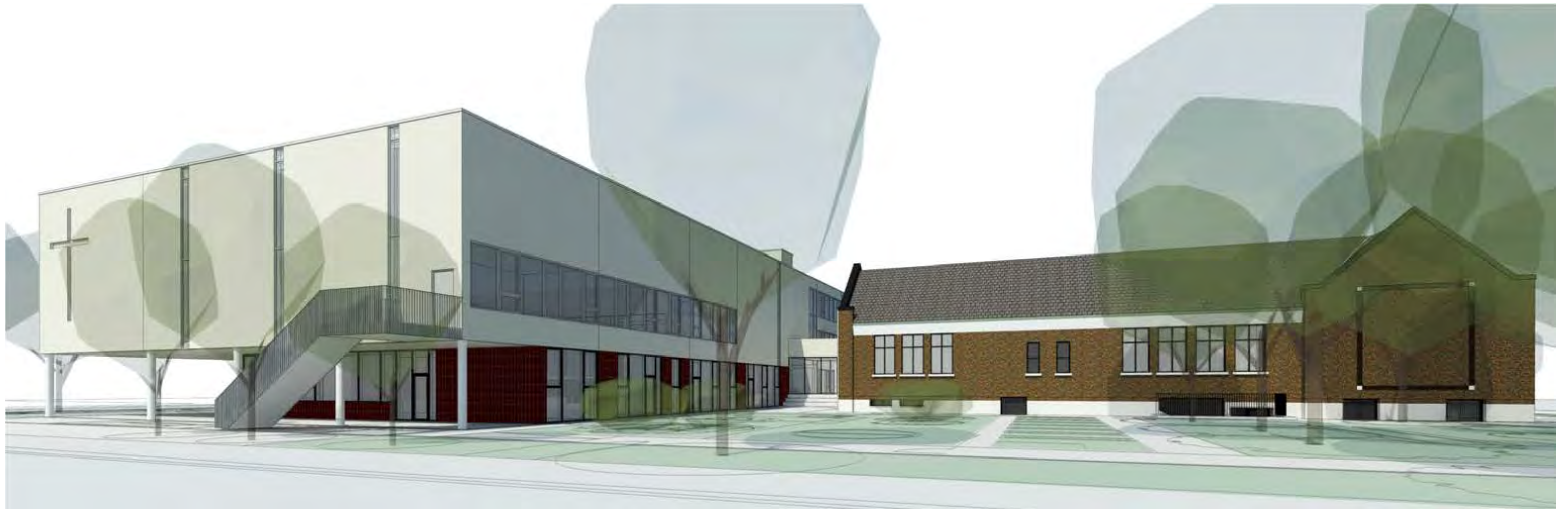


MASONRY WITHIN SCHOOL

## MATERIAL PALETTE MINERAL / TEXTURES





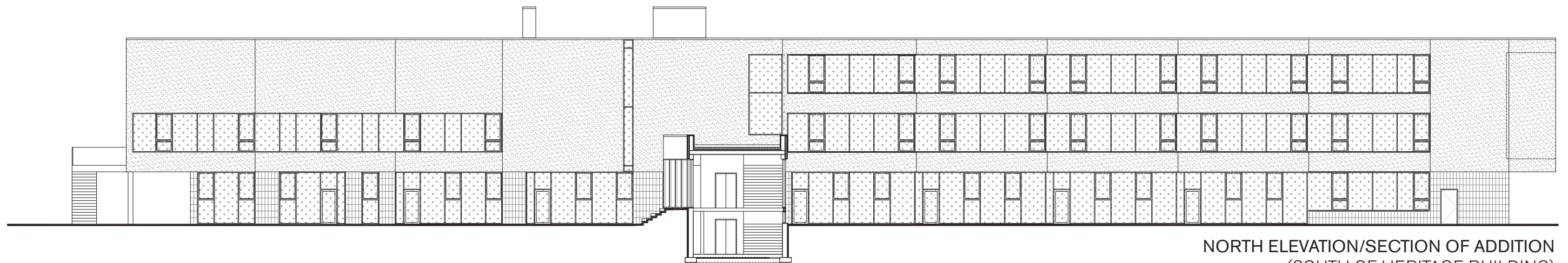








NORTH ELEVATION FROM STANLEY AVENUE

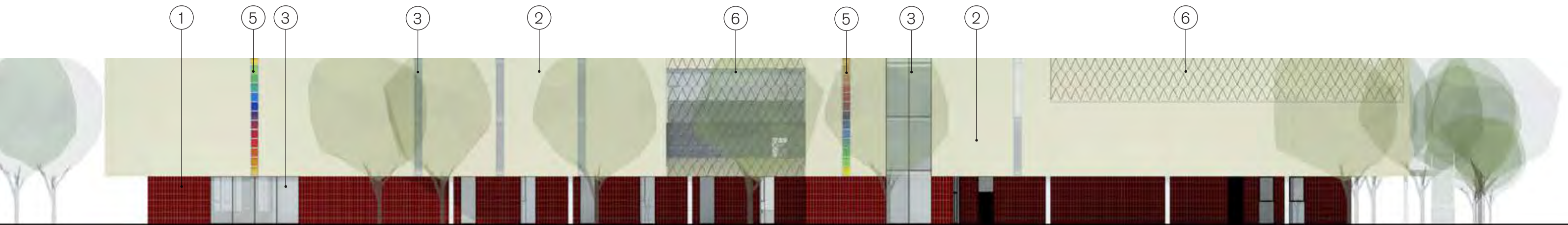


NORTH ELEVATION/SECTION OF ADDITION  
(SOUTH OF HERITAGE BUILDING)

Material Legend

- ① glazed masonry veneer (colour to be determined with Urban Design staff on site)
- ② 'Terraneo' textured stucco
- ③ glazing with aluminum framing
- ④ existing brick at heritage school

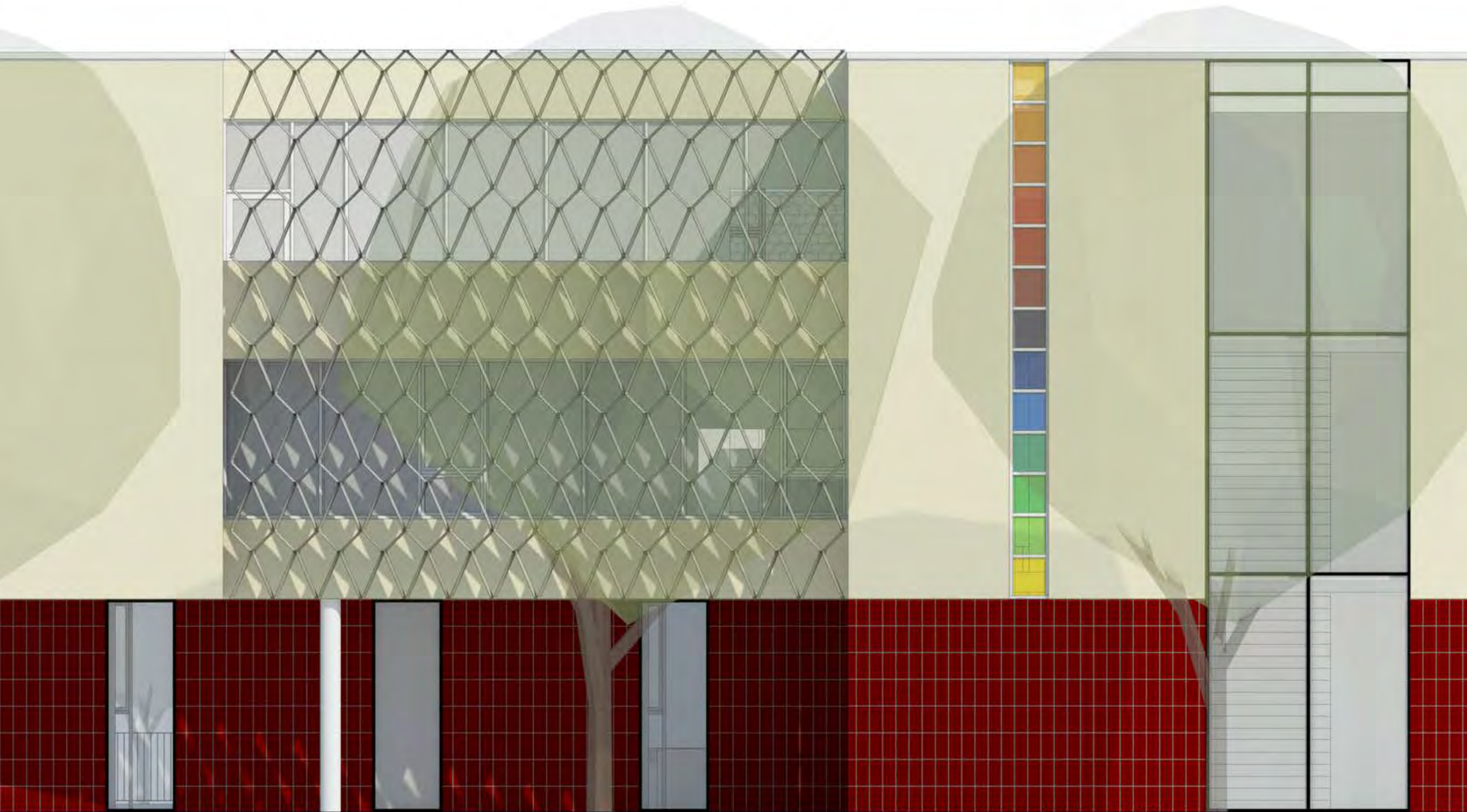




#### Material Legend

- ① glazed masonry veneer (colour to be determined with Urban Design staff on site)
- ② 'Terraneo' textured stucco
- ③ glazing with aluminum framing
- ④ existing brick at heritage school
- ⑤ coloured glazing
- ⑥ aluminum screen





SCALE: 1 : 50

ST. LEO - ST. LOUIS CATHOLIC SCHOOL cm1802

19.06.10

KOHN SHNIER **architects**

ENLARGED PARTIAL SOUTH ELEVATION 10





WEST ELEVATION



EAST ELEVATION

Material Legend

- |   |                                    |
|---|------------------------------------|
| ① glazed masonry veneer (colour to be determined with Urban Design staff on site) | ⑦ freestanding painted steel cross |
| ② 'Terraneo' textured stucco  | ⑧ recessed stucco cross            |
| ③ glazing with aluminum framing   | ⑨ steel picket guard               |
| ④ existing brick at heritage school   |                                    |
| ⑤ coloured glazing  |                                    |
| ⑥ aluminum screen   |                                    |





SCALE: 1 : 50

ST. LEO - ST. LOUIS CATHOLIC SCHOOL cm1802

19.06.10

KOHN SHNIER **architects**

ENLARGED PARTIAL EAST ELEVATION 12