



February 2, 2016

St. Paschal Baylon Catholic School
15 Paschal Court
Willowdale, ON
M2M 1X6

Attention: Sally Rivers, Principal

Re: St. Paschal Baylon Catholic School – Expanded Addition
Status of the Project – January 2016

Capital Development continues to work on the expanded addition for St. Paschal Baylon.
The status of the project is:

- We are pleased to advise that the Ministry of Education has granted “Approval to Proceed to tender” for an addition to St. Paschal Baylon Catholic School, including additional funding for unique site costs related to site preparation and Toronto Green Standards, and approval to use additional Proceeds of Disposition to provide for the construction of a new gymnasium. This approval is a major step forward for our addition that clears the way for the project to be tendered to contractors;
- One final issue concerning insufficient Municipal water supply for fire-fighting remains to be resolved for the Site Plan Agreement. Once this is resolved, preparation, signing and registration of the Site Plan Agreement with the City of Toronto and review of the Building Permit application will take a minimum of three months;
- City of Toronto municipal workers may strike at the end of February 2016. A strike would delay the issuance of building permit and the start of construction;
- A registered Site Plan Agreement is required for the Building Permit to be issued, however we will be applying for a conditional Foundation Permit to allow us to begin construction earlier;
- The consultants and TCDSB Facilities staff are finalizing tender documents to be issued to contractors for bidding in early March. If the tender results are within the approved budget and barring no unforeseen difficulties with Municipal approvals, we hope to begin construction in the spring;
- Once construction begins the area of play space for the children will be reduced. Attached you will find a plan showing the proposed construction zone
- Renovations to the existing school will be undertaken during the second summer of construction when the addition is nearing completion or after the addition is occupied; some work may occur in the existing school in the first summer; an update on the construction schedule will be provided once the construction contract is awarded.

- Students will be relocated from the portables into the addition, when the construction is complete and ready for occupancy.

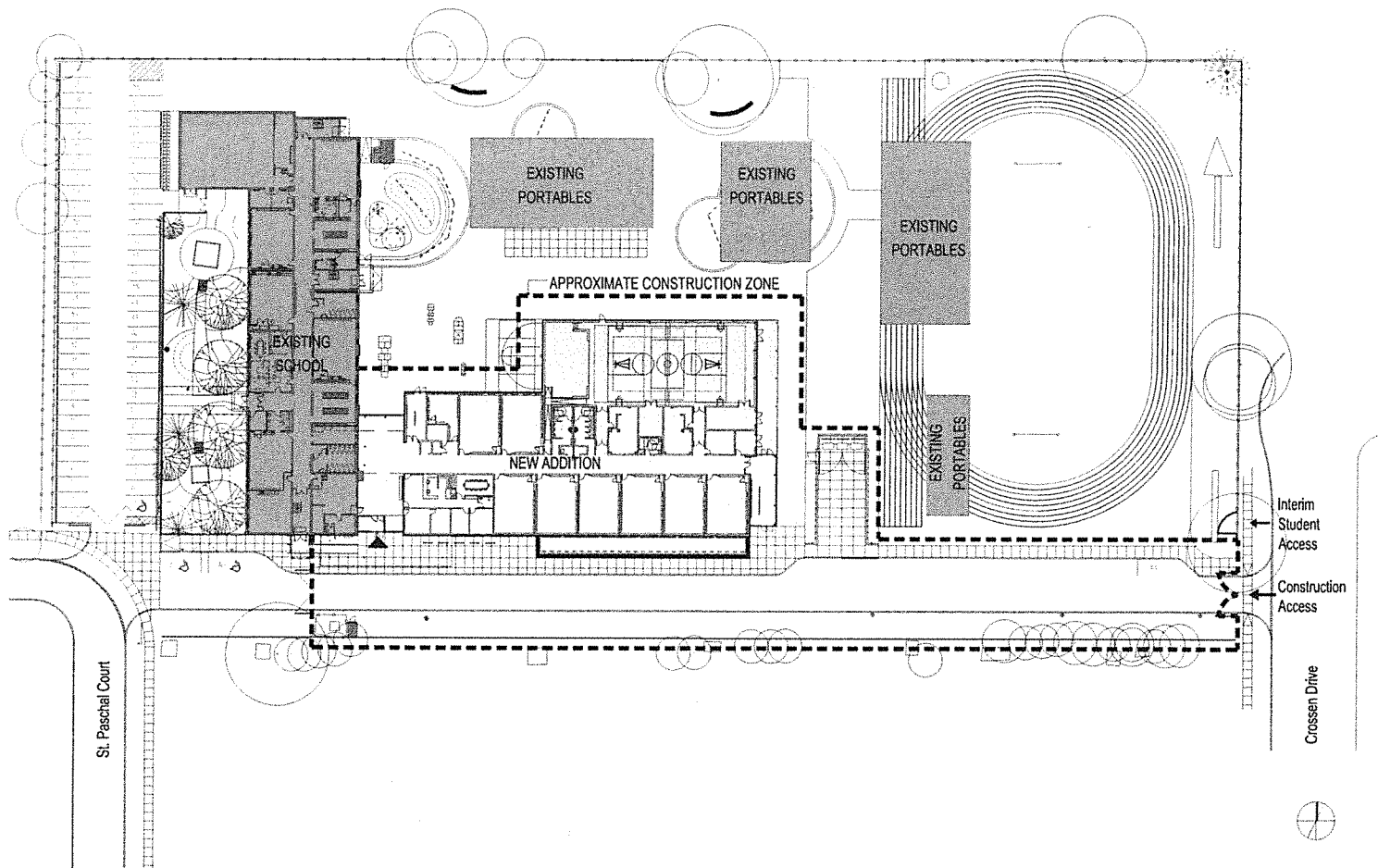
Please share this information with your school community. Check our website <http://www.tcdsb.org/schools/stpaschalbaylon/News/SchoolRenovations/Pages/default.aspx> for updated information on the project.

Yours truly,



Virginia Barton, B. Arch., M. Sc. Arch. & U.D., OAA
Senior Coordinator, Capital Development

Copy: A. Sangiorgio, Associate Director - Planning & Facilities
M. Puccetti, Superintendent of Facilities Services
J. Shain, School Superintendent
M. Rizzo, Trustee
L. Kahssay, Project Supervisor
D. Friesen, Senior Manager of Capital Development
J. Yan, Sr. Coordinator – Communications
E. Szekeres Milne / A. Winterhoff - Communications



Drawing Title

ST. PASCHAL BAYLON CATHOLIC SCHOOL **Proposed Addition - Construction Zone**

Scale: N.T.S.

Date: 2016-01-15

50 Park Road
 Toronto, Ontario
 M4W 2N5

T 416 968 7908
 F 416 968 0687
 www.dtah.com

DTAH Architects Limited

dtah

